

Herbicide Distribution

Check your school's location in relation to defined areas (see map on page 3)
(According to the Agricultural Chemicals Distribution Control (ACDC) Act 1966)

- RED** - Declared hazardous areas (listed below)
- GREEN** - Covered by the provisions of the ACDC Act (but not hazardous area)
- WHITE** - Not covered by provisions of the ACDC Act

If you are in a **RED** zone;

- a) Declared hazardous areas are listed below. Within these hazardous areas certain chemicals have restricted or prohibited use. These 'restricted' chemicals have limitations applied to their use in hazardous areas because of the potential adverse effect on crops susceptible to these herbicides. A distribution permit, with conditions attached, takes into account the susceptible crops. Adherence to the conditions of the permit provides the crops some protection when these herbicides are applied within their vicinity.
- b) You will need a licence for any herbicide application in the area (hand powered or motorised)
- c) If you use an 'authorised technique' to apply a 'restricted chemical' you will not need a permit. There are two authorised techniques;
 - cut stump, basal bark and frill ringing more than 100 metres away from susceptible crops
 - stem injection
- d) If you use another method to apply a 'restricted herbicide' you will also need a permit.

Hazardous Area No. 1: cities of Caloundra and Redcliffe and the shires of Caboolture, Maroochy, Noosa and Pine Rivers.

- The restricted herbicides are any herbicides containing picloram or an ester formulation of 2,4-D and MCPA.

Hazardous Area No. 2: city of Toowoomba, the town of Dalby and the shires of Cambooya, Clifton, Jondaryan, Millmerran, Pittsworth, Rosalie, Wambo and Warwick.

- The restricted herbicides are any herbicides containing an ester formulation of picloram. In addition, any ester formulation of 2,4-D is totally banned from use in this hazardous area.

Hazardous Area No. 3: shires of Bauhinia, Belyando, Daringa, Emerald and Peak Downs, and the part of the Broadsound Shire west of the top of the Broadsound and Connors ranges.

- The restricted herbicides are any herbicides containing an ester formulation of 2,4-D.

**It is recommended that alternative chemicals are used rather than the 'restricted herbicides'.
A permit is not required when using an alternative herbicide.**

If you are in a **GREEN** zone;

- You will **not** need a license if you are only applying herbicides using hand powered methods
- You **will** need a license if you are applying herbicides using non-hand powered methods. e.g. applying any herbicide using a tractor with a boom spray.

If you are in a **WHITE** zone;

- You will not need licenses or permits
- This is because these areas have been traditionally used for grazing and animal production with only limited crop production. Application of herbicides presents minimal risk to crops in adjacent properties.

Health & Safety Fact Sheet

What is hand powered equipment?

- Equipment that is hand powered e.g. back pack spray kit
- Equipment powered by compressed air or gas applied directly to the spray liquid for distribution without the use of air blast techniques
- Hose proportioning devices.

What is a licence?

A commercial operator's license is issued under the *ACDC Act*. Licenses can be obtained through a number of channels e.g. passing an examination or holding approved accreditation issued through a Registered Training Organisation. Undertaking the approved accreditation process provides participants with basic training and allows the person to qualify for the unrestricted class of licence.

Detailed information about how to obtain a license is available at:
http://www.dpi.qld.gov.au/cps/rde/xchg/dpi/hs.xsl/4790_4896_ENA_HTML.htm

What is a permit?

Specific herbicides have restrictions placed on their use when they are applied in hazardous areas. A licensed ground or aerial distribution contractor submits an application for a distribution permit to Biosecurity Queensland, Department of Primary Industries and Fisheries (DPI&F) on the approved application form. The application should set out details of the spraying that needs to take place including;

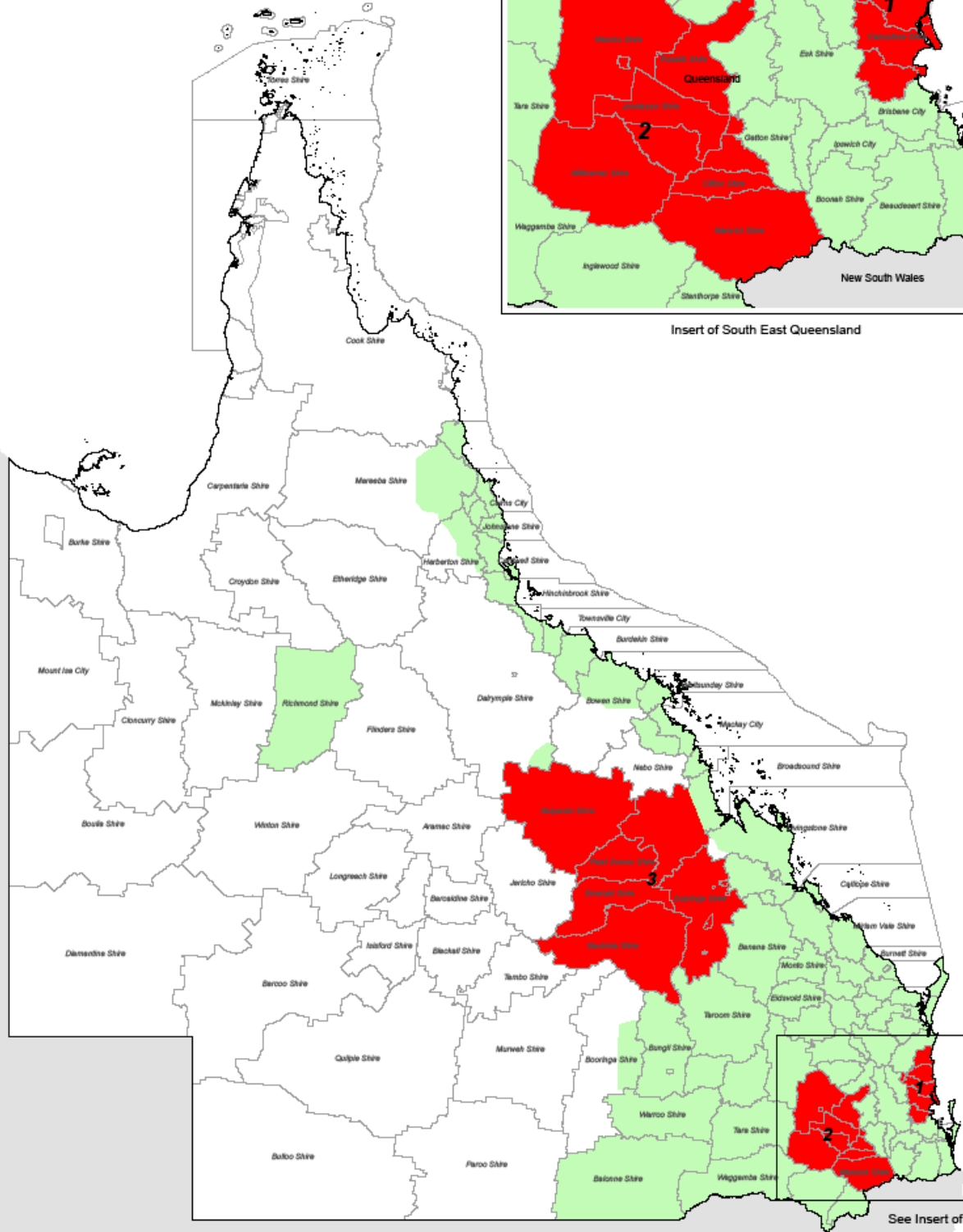
- the area to be treated
- the restricted herbicides to be used
- the crop or situation relating to the weeds to be treated
- the spraying equipment to be used
- the licensed operators to carry out the spraying

More information: http://www.dpi.qld.gov.au/cps/rde/xchg/dpi/hs.xsl/4790_4999_ENA_HTML.htm

Health & Safety Fact Sheet



Agricultural Chemicals Distribution Control Act 1966 (ACDC Act)



DISCLAIMER
Colour representations in parts of Shires in this map act as a guide only to show where the Act applies or hazardous areas are located within these Shires. They cannot be relied upon as an accurate location guide. Readers wishing to establish exact locations must consult the Agricultural Chemicals Distribution Control Regulation 1966, sections 3, 33 and schedule 1.



Legend

- Local Govt Area boundary
- Hazardous areas 1, 2 and 3
- Other areas under the Act

Queensland Government
Department of Primary Industries and Fisheries
Biosecurity Queensland
ACDC Act Areas
Parts of Qld where the Act applies
As at: 16 March 2007