

# Implementing Virtual Schooling Policies

Information Management Services Branch  
Corporate and Professional Services

Be aware that if your MOE user policy further up the tree has the data conferencing settings on anything other than 'not configured' then it will impact on the VSS Group Policy you have implemented further down the tree. If you have set it at 'not configured' up the top this will allow it to drop through and apply the policies in the VSS Group Policy list.

## 1. Purpose

Data conferencing is currently available within the Education Queensland network. Due to the configuration of group policies polices students may experience difficulties accessing this service.

This document outlines the procedure required to implement a Virtual Schooling policy that will allow students to utilise Data Conferencing services.

Whilst it is not a requirement, the processes listed in this document have been modeled on the EQ MOE network.

**Note:** The Virtual Schooling policy is currently available as standard on all EQ MOE 2005.1 Server Installations. This document covers the procedure for importing that policy to EQ MOE v5.x servers and configuring an appropriate user group.

The policy is available from the /data/vss folder on the terminal server, or the IMS Service Centre

Please contact the IMS Service Centre or your Regional System Technician for further guidance with the implementation of Virtual Schooling Policies.

## 2. Contacts

IMS Service Centre	1800 648 679
Regional System Technician	

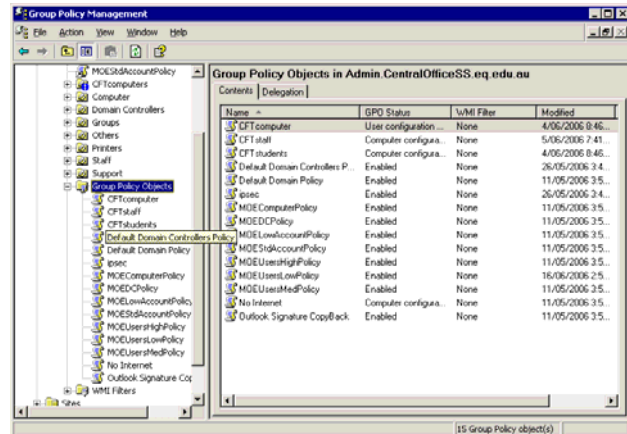
## 3. Process

- 3.1 Open UDM, navigate to Group Pairs, right mouse click and select **New**, type the name of the Group Pair, ie. VirtualSchooling - this will create a group called GGUsrVirtualSchooling.
- 3.2 Select the **Group Policy Management** Console  
ie. Start > Programs > Administrative Tools > Group Policy Management.
  - 3.2.1 Select the **Group Policy Objects** folder and select expanding Forrest.curric.schoolname.eq.edu.au > Domains > Curric.schoolname.eq.edu.au.

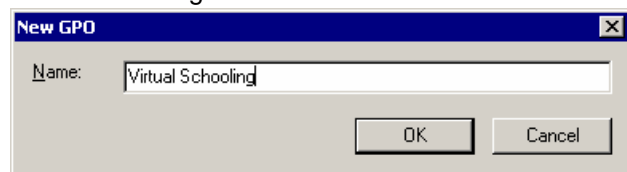
### Contact

p 07 3421 6656  
e learningplace@qed.qld.gov.au  
www.learningplace.eq.edu.au

- 3.2.2 Right mouse click and select the **Group Policy Objects** folder and select **New Group Policy Object**.

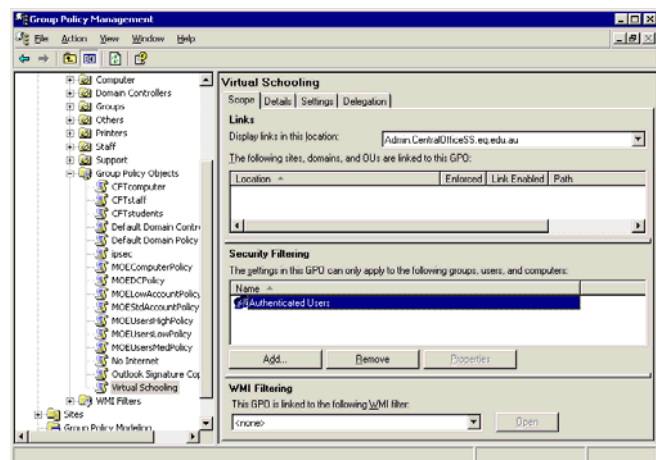


- 3.2.3 In the dialogue window type the name of the policy, ie. VirtualSchoolingUsers.



- 3.2.4 Select the name of the policy you created, ie. Virtual Schooling.

- 3.2.5 In the Security Filtering section select **Authenticated Users** and select the **Remove** button.



- 3.2.6 In the same section select the **Add** button.

- 3.2.7 In the Select User, Group, Computer, or Group Window type the name of the group, ie. GUsrVirtualSchooling.

- 3.2.8 In the Group Policy Management Console navigate to the Student OU and right mouse click and select **Link an Existing GPO**.

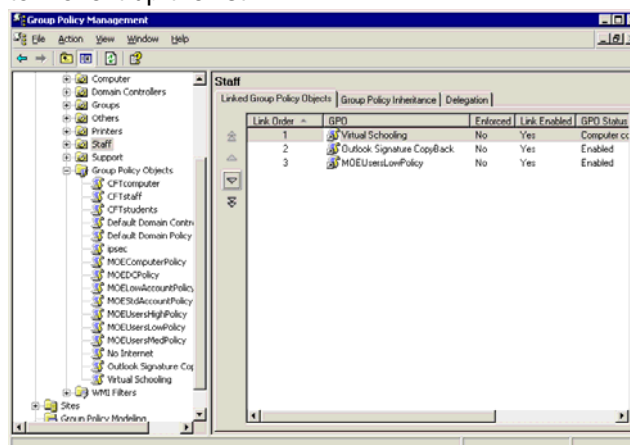
- 3.2.9 Select the VirtualSchoolingUsers from the dialogue window.

## Contact

p 07 3421 6656  
e learningplace@qed.qld.gov.au

www.learningplace.eq.edu.au

- 3.2.10 Select the **Linked Group Policy Objects** tab and make sure the policy you want set is to the 1st position. If not, use the arrows to the left of the screen to move it up the list.



- 3.2.11 Select the **Details** tab and select **Computer configuration settings**, disable to speed up the processing of this policy. Repeat sections 3.2.8 to 3.2.11 for the Staff OU if required

- 3.2.12 Save the /vss folder somewhere on the server. Right mouse click and select the policy (ie Virtual Schooling) and select **Import Settings**. This will open the Import Settings Wizard. Follow the prompts to import the EQ standard policy from where you saved the folder. You may then delete the folder.

- 3.3 To apply this policy, add the required students or staff to the group GGUsrVirtualSchooling.

#### 4. Document history

TABLE A					
Version	Issued	Sections	Pages	Modified by	Comments
1	31/01/2006	All	All	Luke Glyde	Initial Release
2	01/08/2006	All	All	John Boetje	Amendment

#### 5. Copyright

This material is copyright to Education Queensland, and may not be copied, distributed or used outside of Education Queensland for any purpose.

#### 6. Approval

Content Owner:		Contact:	
Signature:			
Approved by:		Date:	
Signature:			

#### Contact

p 07 3421 6656  
e learningplace@qed.qld.gov.au

www.learningplace.eq.edu.au