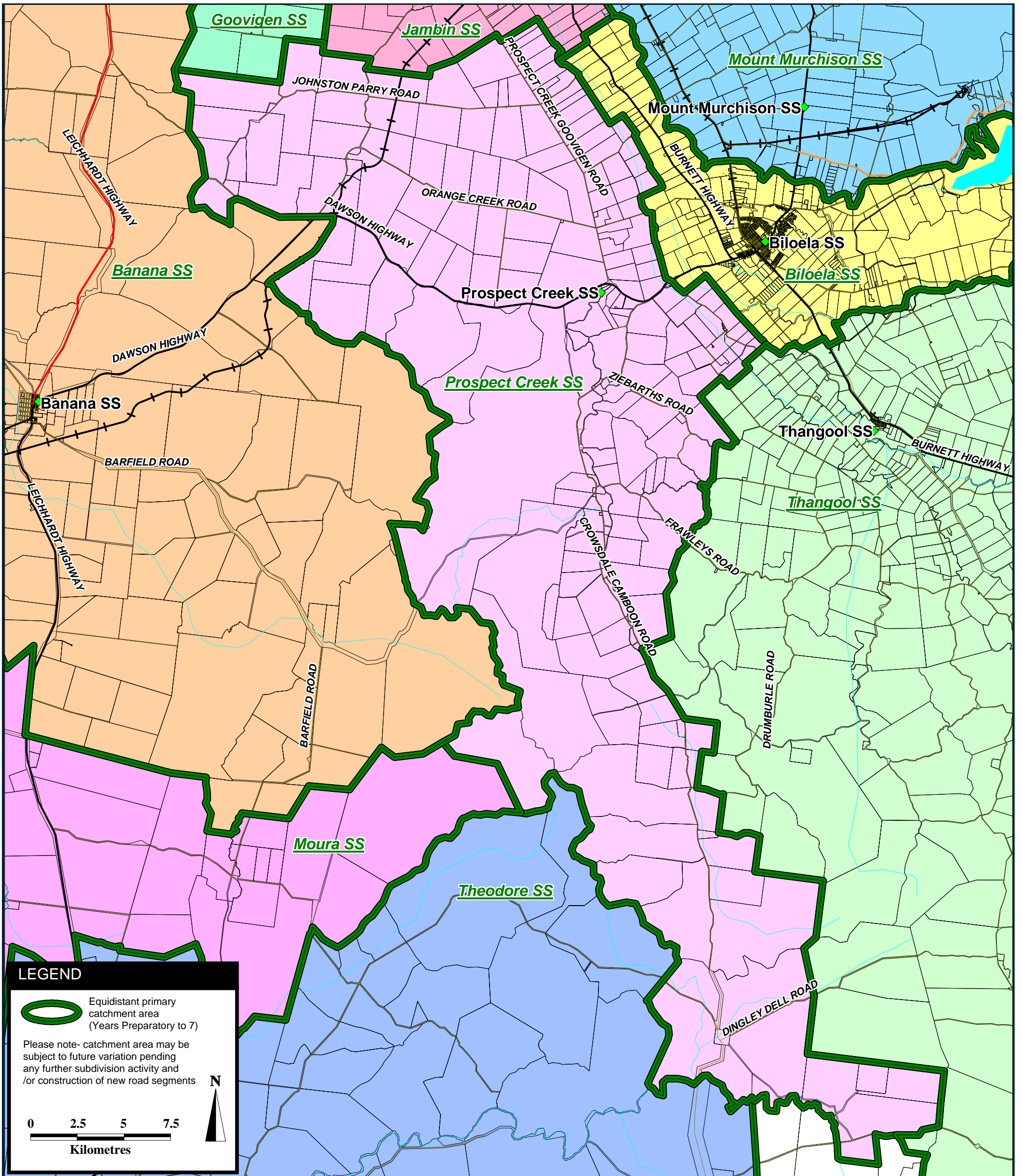


Prospect Creek State School - Equidistant Catchment Area (September 2009)



Planning Information and Forecasting Unit
 17 September 2009 JV
www.infrastructure.qld.gov.au/planning

© The State of Queensland (Department of Infrastructure and Planning) 2009
 No liability accepted for any loss or damage which may arise from the use of or reliance upon this data