

# State Schools of Tomorrow

Tomorrow's Schools – providing for a smarter future

## Program Update

November 2009

Round 1 Projects

### Eastern Ipswich

#### New Cluster Leadership Centre Taking Shape

The \$134.1 million *State Schools of Tomorrow* initiative for Eastern Ipswich is continuing to move ahead steadily with the refurbishment of existing teaching blocks at Silkstone, Bundamba and Riverview State School nearing completion. Meanwhile the refurbishment of the Junior Science and teaching blocks at Bundamba Secondary College is progressing. The redevelopment and construction of new administration facilities at Riverview and Bundamba State Schools have also been completed

The new cluster Leadership Centre and the Performing Arts Centre at Bundamba State Secondary College are both looking very impressive, with external finishes commenced on the Performing Arts Centre. The new staff and visitors car park for the Leadership Centre and Performing Arts Centre has also been completed.

#### **Bundamba State School**

The internal refurbishment of H block is well advanced with all new internal walls and windows installed. The new eight space teaching block and the refurbishment of F Block are completed with new furniture and interactive whiteboards installed. The extension and internal refurbishment to the Resource Centre is completed with new furniture being put in place. The refurbishment included a multi-media room, new floor coverings, internal painting and new internal ceiling. Staff members have moved into the new administration block and staff room. The new external fencing and entry statement are finished. The external refurbishment of the existing buildings is also well advanced with a number of blocks finished. Work has also started on the new sports centre under the Australian Government's Building the Education Revolution (BER) initiative.

#### **Silkstone State School**

Work is well underway with the new Resource Centre with internal walls in place and electrical and data cabling being installed. The new outdoor learning areas are near completion with only some joinery work to be completed. The refurbishment of H Block to cater for music is advancing with the internal demolition completed. Classes are now using the two new eight space teaching blocks. The refurbishment of blocks C and D with new internal walls and ceilings is also well advanced. The upgrade of the main car park, with new entrance point and new external fencing is scheduled to be completed by Christmas. The new performance centre being delivered under the Australian Government's BER program has reached lockup stage.

#### **Bundamba State Secondary College**

The external and internal works for the new Performing Art Centre and cluster Leadership Centre are progressing well with external painting started on the Performing Art Centre. The external eating area of the new Café has been completed. The junior science block refurbishment is nearing completion. The new Special Education Unit is advancing with carpet and internal painting completed. The external painting of the school is well advanced with the Library, Administration, Hall and a number of other blocks completed. The construction of the new covered area from G Block is also nearing completion.

#### **Riverview State School**

Site work has started on the new staff and visitors car park creating a safer entry and exit point. The external painting and finishes upgrade to the school is nearing completion with a number of blocks already finished. Work has also started on the entry statement including new entry fence. The new junior covered area is well advanced, with a completion due in mid December. The extensions to the administration and library block have been completed with staff having moved in. The new outdoor learning areas are also nearing completion

with only joinery work to be completed. The slab has been installed for the new sports centre to be delivered under the Australian Government's BER program.

### **Bremer State High School**

Tenders for the construction of the new replacement Bremer State High School have been called with the contract expected to be awarded in the coming month. The concept plan for this exciting new educational institution located next to the University of Queensland is available on the *State Schools of Tomorrow* website and can be accessed using the link below. The school is to open for the 2011 school year.

Blackstone and Dinmore state schools will close at the end of this school year. Parents of children required to change primary schools because of a school closure have received a uniform allowance of \$285. Both schools will continue to operate and be funded normally until their closures.

If you have questions or concerns, please feel free to contact your school principal or the *State Schools of Tomorrow* team on 32370008. For more information please visit the *State Schools of Tomorrow* website: <http://education.qld.gov.au/tomorrows-schools/ssot-projects.html>

**Eastern Ipswich Site**

**Bundamba State Secondary College**



New Performing Arts Centre



Refurbished Junior Science Lab

**Bundamba State School**



Refurbished Library with new furniture

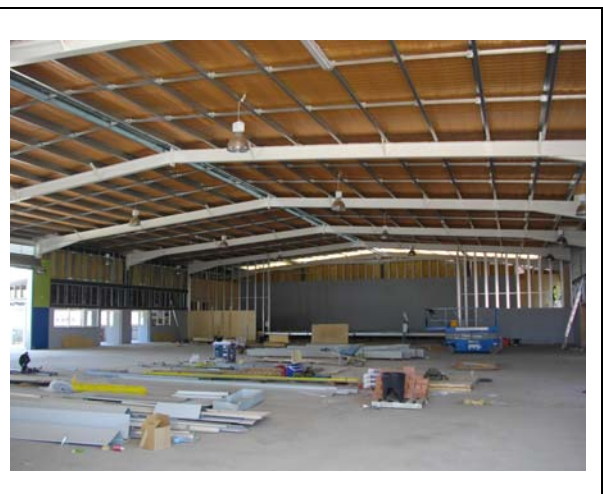


New 8 space Teaching Block

**Silkstone State School**



New Resource Centre



New Performance Centre

**Riverview State School**



New outdoor learning area



New staff and visitors car park