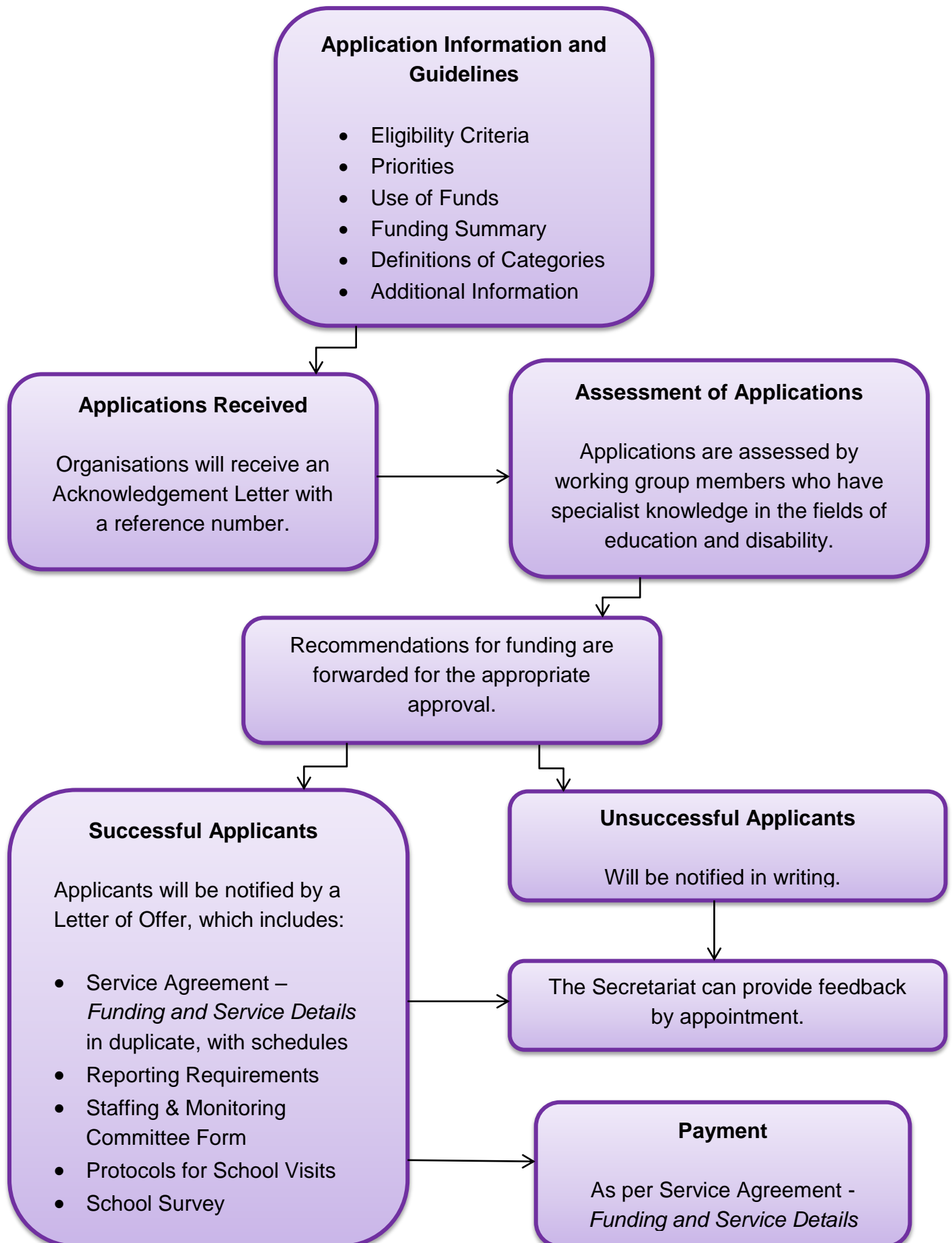


# Funding Process Overview



# Eligibility Criteria

## Non School Organisations (NSO)

A Non School Organisation must be:

Incorporated, not-for-profit, non-government and

- Provide programs and/or activities designed specifically for students with disability
- Not be managed or controlled by, or on behalf of, the government of the State, and
- Not registered as a school.

## Student with Disability

A student enrolled in a school and meets the criteria for significant educational adjustments as outlined in the *Education Adjustment Program (EAP) Handbook*  
<http://education.qld.gov.au/students/disabilities/adjustment/pdfs/eap-handbook.pdf>

Students whose only impairments are *specific learning difficulties* are not eligible.

## An NSO may be a:

- Registered charity
- Religious organisation
- Local government instrumentality, or
- Community organisation (recognised as a special education service provider)

## Relevant legislation and policies:

Anti-Discrimination Act 1991: <https://www.legislation.qld.gov.au/legisln/current/a/antidiscrima91.pdf>

Child Protection Act 1999: <https://www.legislation.qld.gov.au/LEGISLTN/CURRENT/C/ChildProtectA99.pdf>

Disability Discrimination Act 1992: [http://www.austlii.edu.au/au/legis/cth/consol\\_act/dda1992264/s22.html](http://www.austlii.edu.au/au/legis/cth/consol_act/dda1992264/s22.html)

Disability Services Act 2006: <https://www.legislation.qld.gov.au/legisln/CURRENT/D/DisabServA06.pdf>

Disability Standards for Education (2005) Section 3.5:

[https://docs.education.gov.au/system/files/doc/other/disability\\_standards\\_for\\_education\\_2005\\_plus\\_guidance\\_notes.pdf](https://docs.education.gov.au/system/files/doc/other/disability_standards_for_education_2005_plus_guidance_notes.pdf)

Education (General Provisions) Act 2006: <http://www.legislation.qld.gov.au/LEGISLTN/CURRENT/E/EducGenPrA06.pdf>

Department of Education and Training - Disability Policy for State Schools:

<http://education.qld.gov.au/schools/disability/index.html>

Department of Education and Training - Student Protection:

<https://oneportal.deta.qld.gov.au/Students/studentprotection/Pages/default.aspx>

Non-State Schools Policy - Students with Disability Program:

<http://education.qld.gov.au/schools/grants/resources/disabilities-policy.pdf>

# Priorities

## 1. Direct Services

Direct services provided to identified eligible students at school to help improve educational access, participation and to enhance learning outcomes.



## 2. Indirect Services

*Resource Centres and Specialised Equipment:* specialised resources and equipment to support access and participation in the curriculum at school.

# Use of Funds

Grants from 2016 will be provided across four funding categories. These include:

- Education Support Services
- Resource Centres
- School Services
- Specialised Equipment

See Definitions of Categories

## Use of Funds

The funds may be used by non school organisations for:

- The salaries of service providers e.g. educators, speech-language pathologists, occupational therapists, physiotherapists and other approved professional disciplines;
- Essential travel and transport costs;
- Consultancy and advisory services;
- Monitoring and evaluation of educational programs; and
- The purchase of specialised educational equipment, resources and technology.

# 2016 Funding Summary

This summary provides a breakdown of information across the funding categories and reflects data collated from the applications lodged in July 2015.

- Four funding categories
- Number of students receiving support
- Total number of submissions received
- Funding amount sought by category
- Base funding amount granted by category
- Total number of funded submissions

\*2015 Data

Category	Total Students*	Number of Submissions	Sought*	Granted	Number of Submissions Funded
<b>EDUCATION SUPPORT SERVICES</b>	714 (789)	8	\$ 730,000	\$ 274,511	7
<b>RESOURCE CENTRES</b>	2812 (2812)	4	\$ 381,156	\$ 219,956	4
<b>SCHOOL SERVICES</b>	4555 (4684)	18	\$ 13,531,610	\$ 6,780,458	18
<b>SPECIALISED EQUIPMENT</b>	0	8	\$ 238,697	\$ 185,076	8
<b>TOTAL</b>	8081 (8285)	38	\$ 14,881,464	\$ 7,460,001	37

Please note: the Total Students column shows the number of students supported in each funding category and indicates in brackets the number of students funding was originally applied for.

The Specialised Equipment category shows zero students supported so as not to duplicate student numbers.

# Definitions of Program Categories

## 2016 - 2018

### **Education Support Services:**

Funding for the provision of a range of services including: educators, speech-language pathologists, occupational therapists, physiotherapists, orientation and mobility specialists to provide personalised learning for students with disability.

The services and activities provided must link to and support each student's educational support plan.

### **Resource Centres:**

Funding to provide specialised equipment, materials and resources to schools for the support of students with disability to improve access and participation in the curriculum and to enhance their educational outcomes.

### **School Services:**

Funding for the provision of direct professional services and consultation in schools for eligible students with disability. Services may include support from educators, speech-language pathologists, occupational therapists, physiotherapists and orientation and mobility specialists.

### **Specialised Equipment:**

Funding for specialised equipment:

- 1) to enhance the equipment loan pools of organisations providing support services to students with disability at school;
- 2) for trial purposes at school;
- 3) to assess student progress.

Specialised equipment is not for long term use at school or for minor equipment and materials.

# Application Information

Please contact the NSO secretariat in September 2016 for access to the 2017 and 2018 Specialised Equipment application eForm.

Part A – relates to organisational details, the services to be provided and the client group.

Part B – is specific to each funding category, as summarised in the following table:

Application	Funding Categories	Application Close
One Year	Specialised Equipment	October each year
Three Years 2016 – 2018	<b>Education Support Services</b>  <b>Resource Centres</b>  <b>School Services</b>	Closed

The 2016 – 2018 Service Agreement will be varied each year, as required, catering for the funding categories as shown in the following table:

Funding Category	1 Year	3 Year
Specialised Equipment	✓	
Education Support Services		✓
Resource Centres		✓
School Services		✓