

## Queensland Schools Planning Reference Committee – Cross-Sectoral New Schools Demand Mapping 2021 to 2041 Cairns Regional Council – 25 November 2019

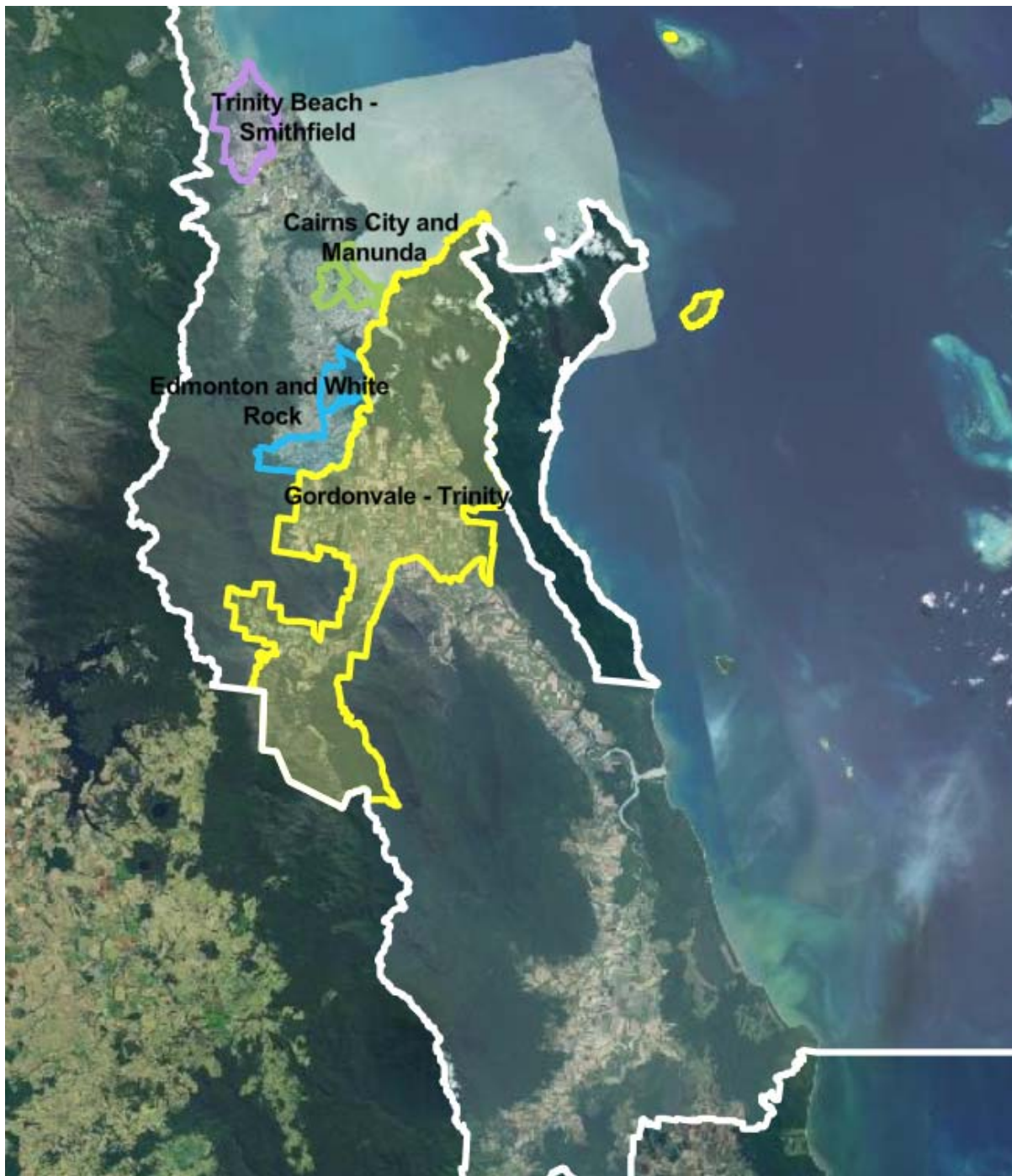
New school recommendations reflect the potential need of new state and non-state primary and secondary schools based on an assessment of the 2018 edition Queensland Government population projections, local advice on population growth and available capacity within the existing school network. The growth SA2s, shown below, were selected for detailed assessment during the Demand Mapping Meeting. Areas for assessment are comprised of one or more Statistical Areas Level 2 (SA2s) which are established by the Australian Bureau of Statistics and are the smallest statistical area commonly used for a range of statistical information including population projections. Population projections used to inform this assessment are prepared by the Queensland Government Statistician's Office and can be accessed [here](#).

SA2 or Cluster	New government and non-government schools that may be required:				Estimated and Projected Primary (ages 5-11) and Secondary (ages 12-17) School-Age Population					
	2021 to 2031		2031 to 2041		Population 2016		Growth 2021 to 2031		Growth 2031 to 2041	
	Primary	Secondary	Primary	Secondary	Primary	Secondary	Primary	Secondary	Primary	Secondary
Gordonvale – Trinity SA2 (including Mt Peter)	1-2	0-1	2-3	1-2	998	817	1,004	912	1,321	1,167
Trinity Beach – Smithfield SA2	1-2	1	0	0	1,392	1,106	375	463	211	178
Edmonton and White Rock SA2s	0	0	0	0	2,001	1,451	356	228	371	331
Cairns City and Manunda SA2s	0	0	0	0	992	954	64	85	81	90
<b>TOTAL</b>	<b>2-4</b>	<b>1-2</b>	<b>2-3</b>	<b>1-2</b>						

Note: Recommendations do not include new schools opening in 2020.



Map of Cairns Regional Council showing the Statistical Areas Level 2 Assessed



*Image from Queensland Globe.*

