



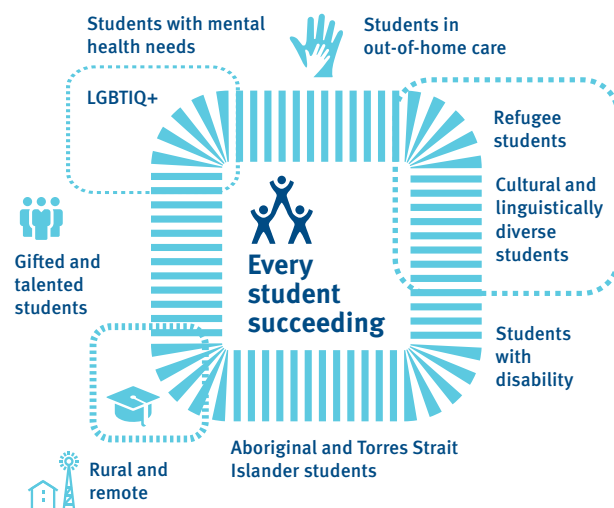
Inclusive education

Queensland students welcomed, engaged, learning and achieving

The Department of Education is committed to providing high quality education to all Queenslanders, and has released a renewed [Inclusive Education Policy](#).





The renewed policy will ensure that students from all backgrounds, of all identities and all abilities are able to access and participate in education and achieve.

The Inclusive Education Policy commits the department to continuing its journey towards a more inclusive education system at policy and regional levels, and as part of everyday practice in schools, educational settings and classrooms.



Our commitment

Our commitment means that children and young people across Queensland, from all social, cultural, community and family backgrounds, and of all identities and all abilities are able to:

-  **attend** their local state school or education centre and be welcomed
-  **access and participate** in a high-quality education and fully engage in the curriculum along-side their similar-aged peers
-  **learn** in a safe and supportive environment, free from bullying, discrimination or harassment
-  **achieve** academically and socially with reasonable adjustments and supports tailored to meet their learning needs.

What we mean by inclusive education

Inclusive education means that students can access and fully participate in learning, alongside their similar-aged peers, supported by reasonable adjustments and teaching strategies tailored to meet their individual needs.

Inclusion is embedded in all aspects of school life, and is supported by culture, policies and every day practices.



Implementation

The department's work towards a more inclusive state education system is guided by nine principles adapted from the United Nations' nine core features for inclusive education:

-  **A system-wide approach**
-  **Committed leaders**
-  **Whole of school**
-  **Collaboration with students, families and the community**
-  **Respecting and valuing diversity**
-  **Confident, skilled and capable workforce**
-  **Accessible learning environments**
-  **Effective transitions**
-  **Monitoring and evaluation**

Further information regarding these principles and how we are supporting every student to succeed is available on our inclusive education website.