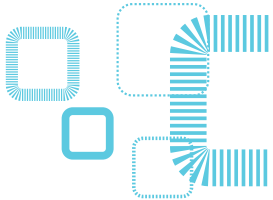
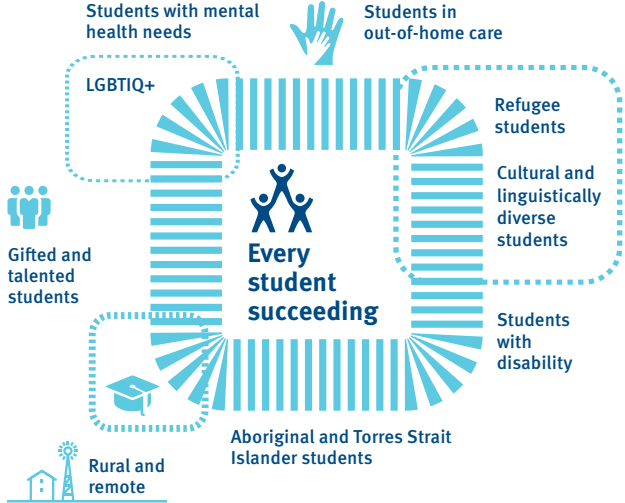


# Inclusive education

**Welcomed Engaged Learning Achieving**

Let's continue our journey towards a more inclusive system. Read the new Inclusive Education Policy and find out how it will help Queensland students succeed.





Students experience **inclusive education** when they can access and fully participate in learning, alongside their similar-aged peers, supported by reasonable adjustments and teaching strategies tailored to meet their individual needs.