



Community Hubs and Shared Infrastructure

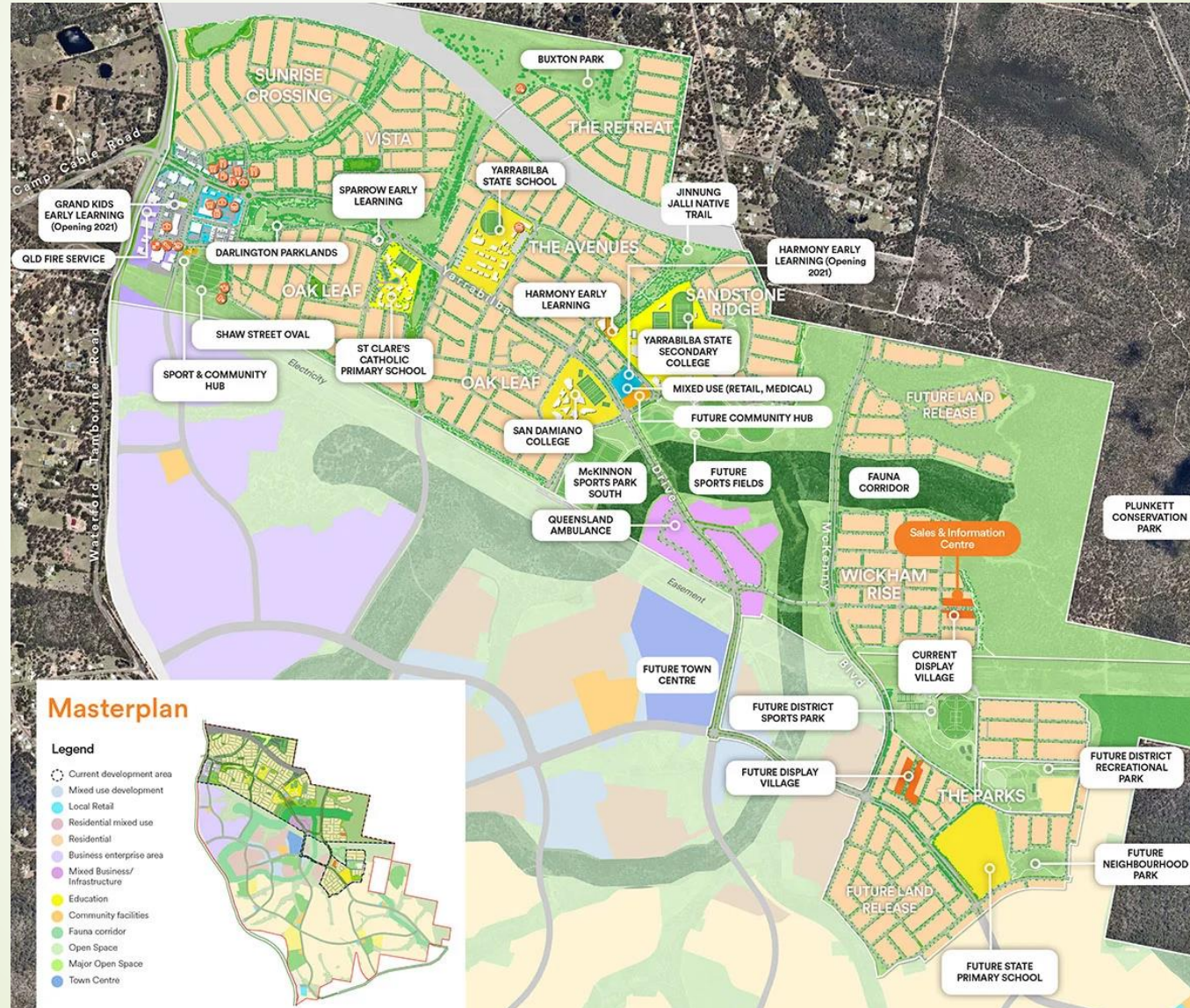
Schools Planning Forums 2022



The Buzz at Yarrabilba

Connecting, Learning, Earning, Innovating.

Yarrabilba Master Plan





Background

- Yarrabilba (Place of Song) is a Lendlease development 45km south of Brisbane development commenced 2012
- Logan City Council – Priority Development Area
- Currently 10 000 residents – projected 50 000 by 2046
- Significant need for community infrastructure
- The Buzz project is the 3rd community hub in the area (already a sport and community facility and Family and Community Place at YSS)


Background

- Young community – average age 25 years old
- 31% of residents are under 14 years old
- Geographically isolated
- Limited transport infrastructure





Yarrabilba's 3rd Community Hub

- More than a Neighbourhood centre
 - An outcomes-based community infrastructure project
 - A centre of learning for the whole community
- 



The Buzz – Project Purpose

- Outcomes-based infrastructure to provide proactive and responsive services to meet current and future needs of a rapidly growing community
- Strong focus on youth
- Youth Centre with a soft entry, warm referral model of support and prevention and a learn and earn focus
- Themes: *Connecting, Earning, Learning, Innovating*
- Flexible and multi-functional design so as community grows and changes, the facility can adapt

The Four Themes



Connecting

**A supportive, inclusive
& connected community**



Learning

**An empowered
community of self-
determined learners**



Earning

**A community engaged
in fulfilling and
meaningful vocation**



Innovating

**A community that
encourages and supports
new ideas and solutions**

Yarrabilba is.....



Connecting

A supportive, inclusive & connected community

- People in Yarrabilba help out as volunteers
- People in Yarrabilba feel part of the community
- People in Yarrabilba can access the services they need
- Students in Yarrabilba are engaged in extracurricular activities in the community



Learning

An empowered community of self-determined learners

- Yarrabilba youth (15-24y) are engaged in education, training or employment
- Adults in Yarrabilba participate in lifelong learning
- Students in Yarrabilba complete Years 11 and 12
- Students in Yarrabilba transition into tertiary study



Earning

A community engaged in fulfilling and meaningful vocation

- Working-age people in Yarrabilba are employed
- People in Yarrabilba manage financially
- People in Yarrabilba find their work fulfilling
- Students in Yarrabilba have gained work experience



Innovating

A community that encourages and supports new ideas and solutions

- People in Yarrabilba start their own business enterprises
- People in Yarrabilba feel part of a community that is doing things differently
- People in Yarrabilba self-organise community activities and events



Project Partners

- ▶ Department of Education
 - ▶ Brisbane Catholic Education
 - ▶ Department of Communities, Disability Services and Seniors
 - ▶ Department of Employment, Small Business and Training
 - ▶ Lendlease
 - ▶ Logan City Council
- 



Location



Design Inspiration



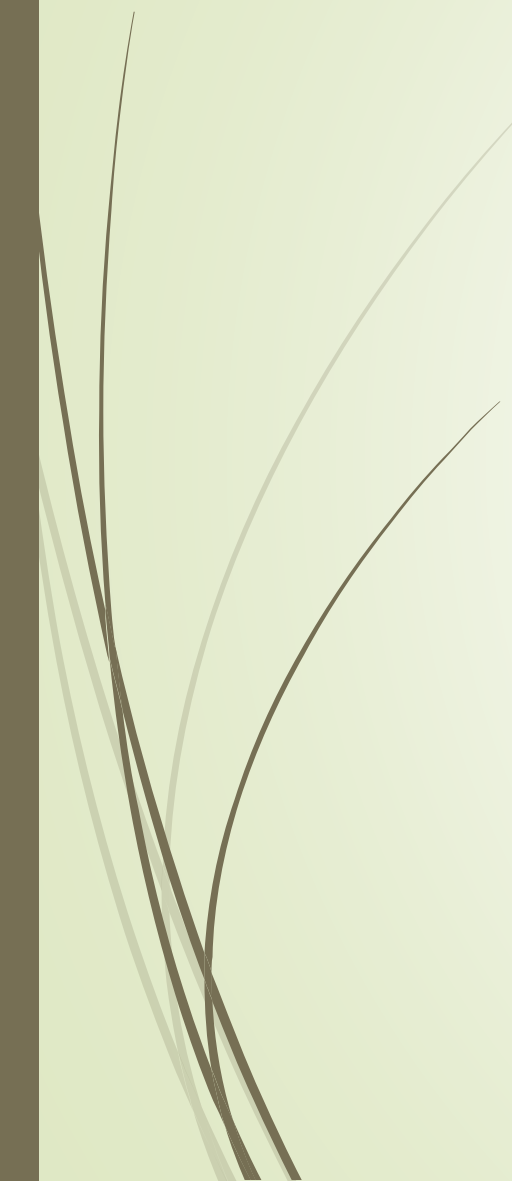


Buzz facilities

- Reception and foyer
- Multipurpose rooms
- Kitchen – not commercial (and kitchenettes in training rooms)
- Youth space
- Training room
- Interview/consultation rooms
- Managers office
- Offices
- Co-working office space
- Large meeting rooms
- Small meeting room
- Staff work room and staff kitchen
- Leasable area – Pod 3 - TAFE



External spaces

- ▶ Yarning circle,
 - ▶ general seating,
 - ▶ spill-out zone,
 - ▶ landscaping,
 - ▶ car parking,
 - ▶ space for a coffee van,
 - ▶ outdoor café area
- 



Outcomes-based Infrastructure

- ▶ collaborative and integrated approaches to service delivery in community hubs improve access, referrals and efficiency, an *Outcomes-based infrastructure model* adds more defined goals around social outcomes
- ▶ *Collaborative Hubs* increase social cohesion and access to services. However, delivery of direct social outcomes beyond these relies on the quality of services delivered not just their integration (CHaPs 2017)
- ▶ An *Outcomes-based Infrastructure Model* is needed to take the next step to social impact. This model directly defines social outcome goals and holds partners accountable for specific program and service elements in order to deliver social outcomes for the community.

Yarrabilba Jobs Exchange





How does it operate?

- ▶ Tenders for Hub operator have closed and the evaluation process has been completed – announcement of successful tender is pending.
- ▶ The Operator will manage:
 - ▶ • Administration of the centre supported by operational funds
 - ▶ • Cleaning, maintenance and security
 - ▶ • Generate additional income through facilities hire
- ▶ See Governance model
- ▶ Facilitation agreement developed by Project Steering Committee
- ▶ Operator Agreement developed by partner agencies prior to tender

Governance and Operational Model

The Hive Operational Governance Structure

Project Partner Agencies
LCC DCDSS BCEO DoE DESBT Lendlease



Project Sponsors
(Informal group of Hive Champions and key senior executive decision-makers from Project Partner Agencies)



Hive Committee
(representatives from Project Partner Agencies)



Hive Operator



Yarrabilba community
(Service providers, Students, Families, Individuals)



Challenges



- ▶ consensus of multiple funding partners to purpose, operational funding, agreements about models service delivery, safety and security of YP, access of facility for partners
- ▶ Indicators of success – differences for each partner agency
- ▶ Long project so changes in personnel in various depts/agencies/stakeholders
- ▶ YP perceptions of what the Buzz should deliver/contain!
- ▶ Ongoing operational costs – who pays?? Income generation capacity???
- ▶ Difficult to quantify
- ▶ Variable funding contributions
- ▶ COVID – impacted timelines, face to face meetings, face to face consultation opportunities, construction delays
- ▶ Challenges include hire of facilities – competition, income generation,
- ▶ Access to facilities by partner agencies, hours of operation



Questions?