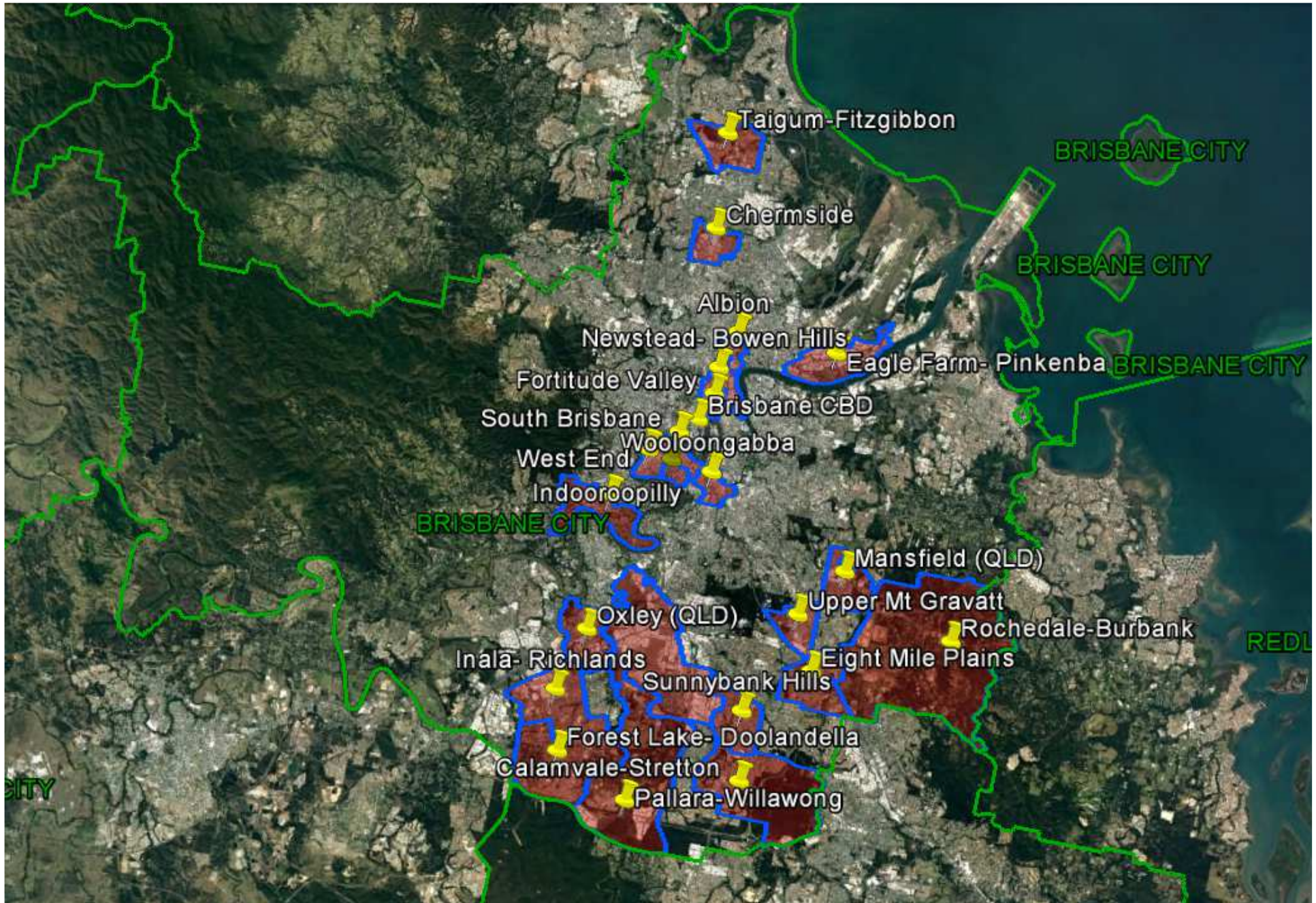


Queensland Schools Planning Reference Committee  
Cross-Sectoral New Schools Demand Mapping  
2016-2036

## Brisbane City Council

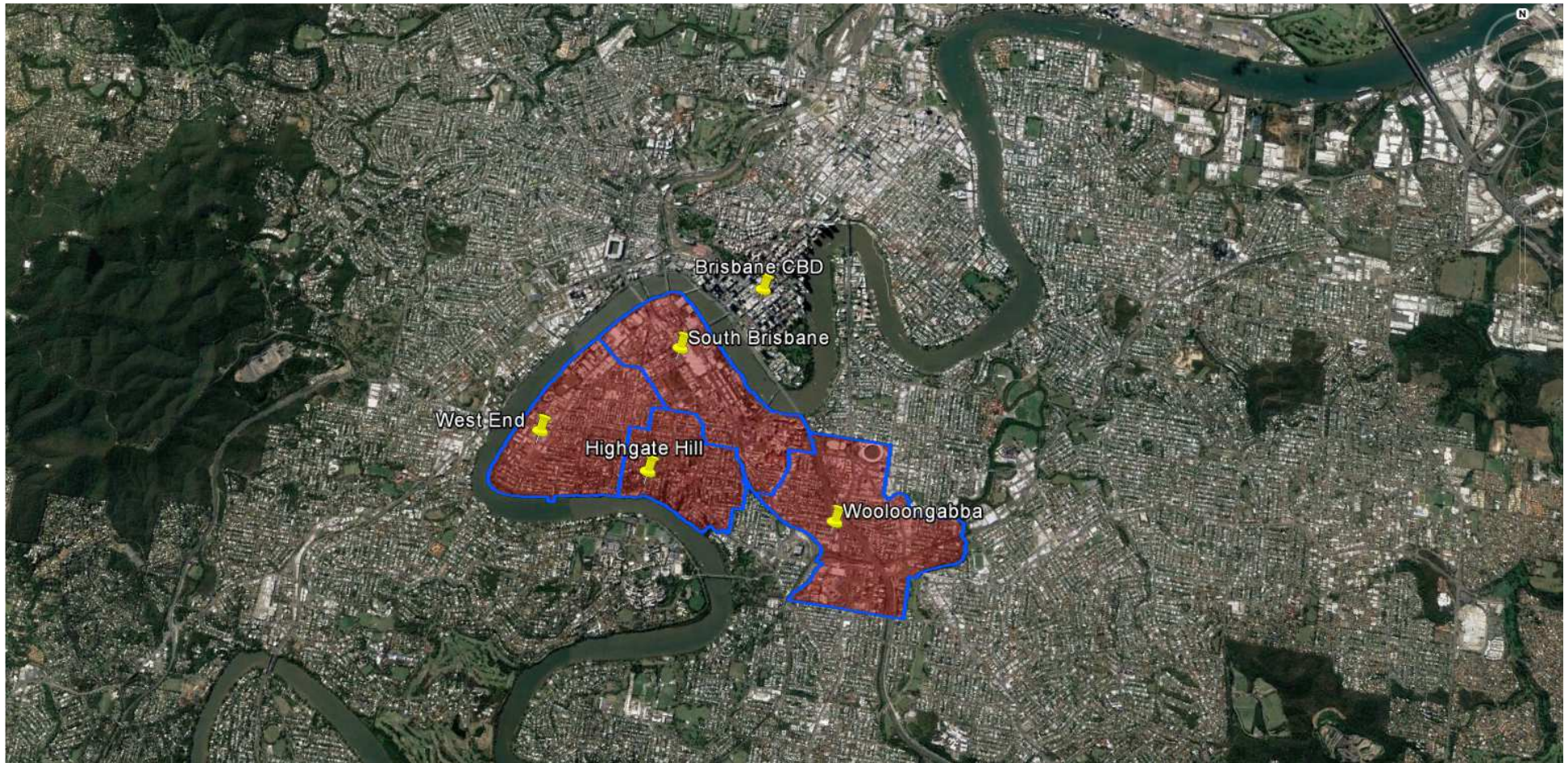
### Investigated SA2

- Woolloongabba; Highgate Hill; South Brisbane; West End
  - Fortitude Valley; Albion; Newstead - Bowen Hills
    - Chermside
      - Forest Lake - Doolandella
        - Inala - Richlands
- Eight Mile Plains; Mansfield (QLD); Rochedale – Burbank; Upper Mount Gravatt
  - Eagle Farm - Pinkenba
  - Calamvale - Stretton
  - Pallara - Willawong
  - Taigum - Fitzgibbon
    - Indooroopilly
  - Sunnybank Hills
    - Oxley (Qld)



Queensland Schools Planning Reference Committee  
**SA2 studied in the Brisbane City Council area**





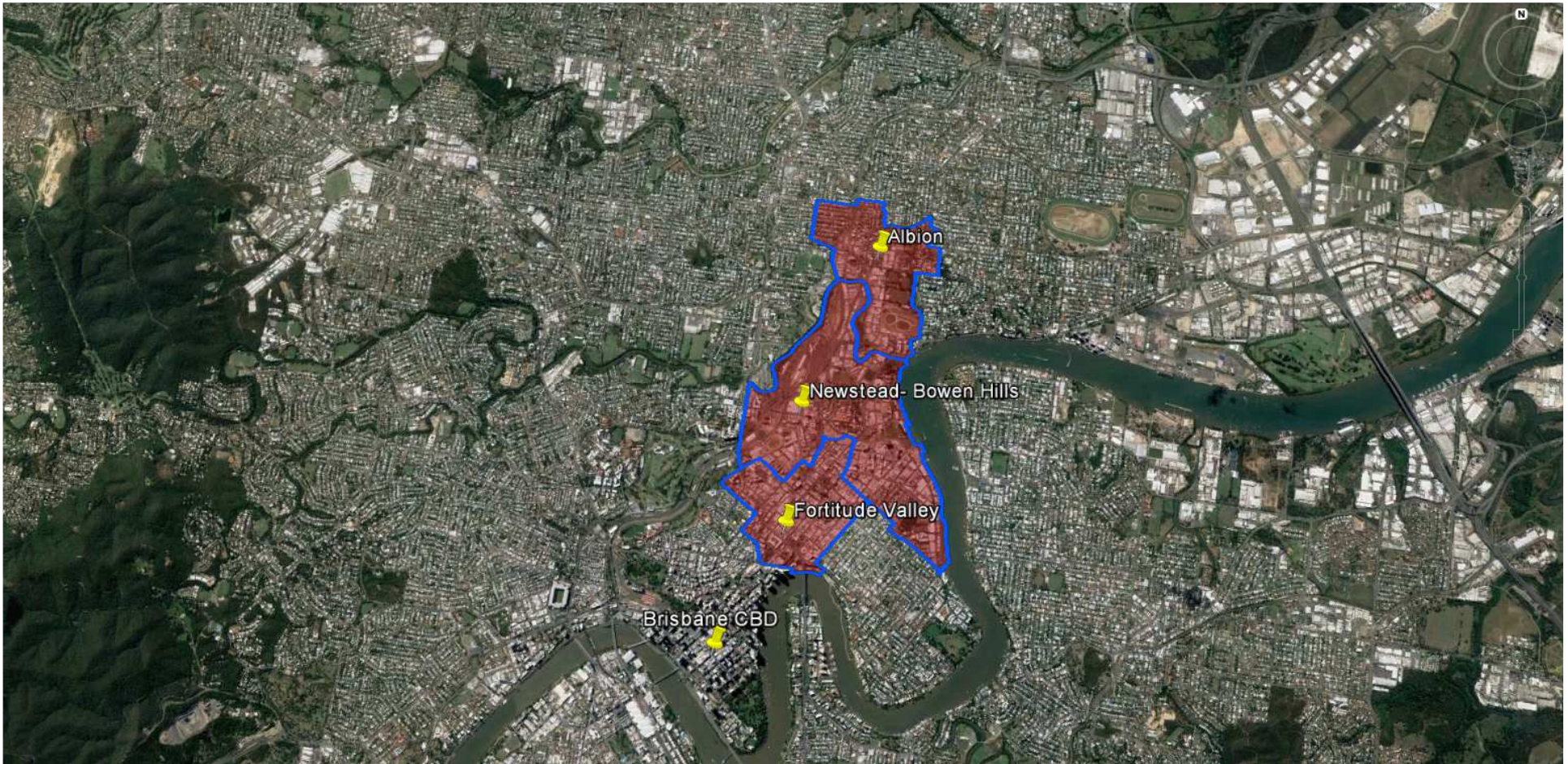
Queensland Schools Planning Reference Committee  
 Cross-Sectoral New Schools Demand Mapping 2016-2036

**Brisbane City Council  
 SA2 Cluster**

**West End; South Brisbane; Highgate Hill; Woolloongabba**

Findings			
Primary		Secondary	
1st Decade to 2026	2nd Decade to 2036	1st Decade to 2026	2nd Decade to 2036
2 new primary schools may be required in the first decade	1-2 new primary schools may be required in the second decade	2 new secondary schools may be required in the first decade	0 - 1 new secondary school may be required in the second decade

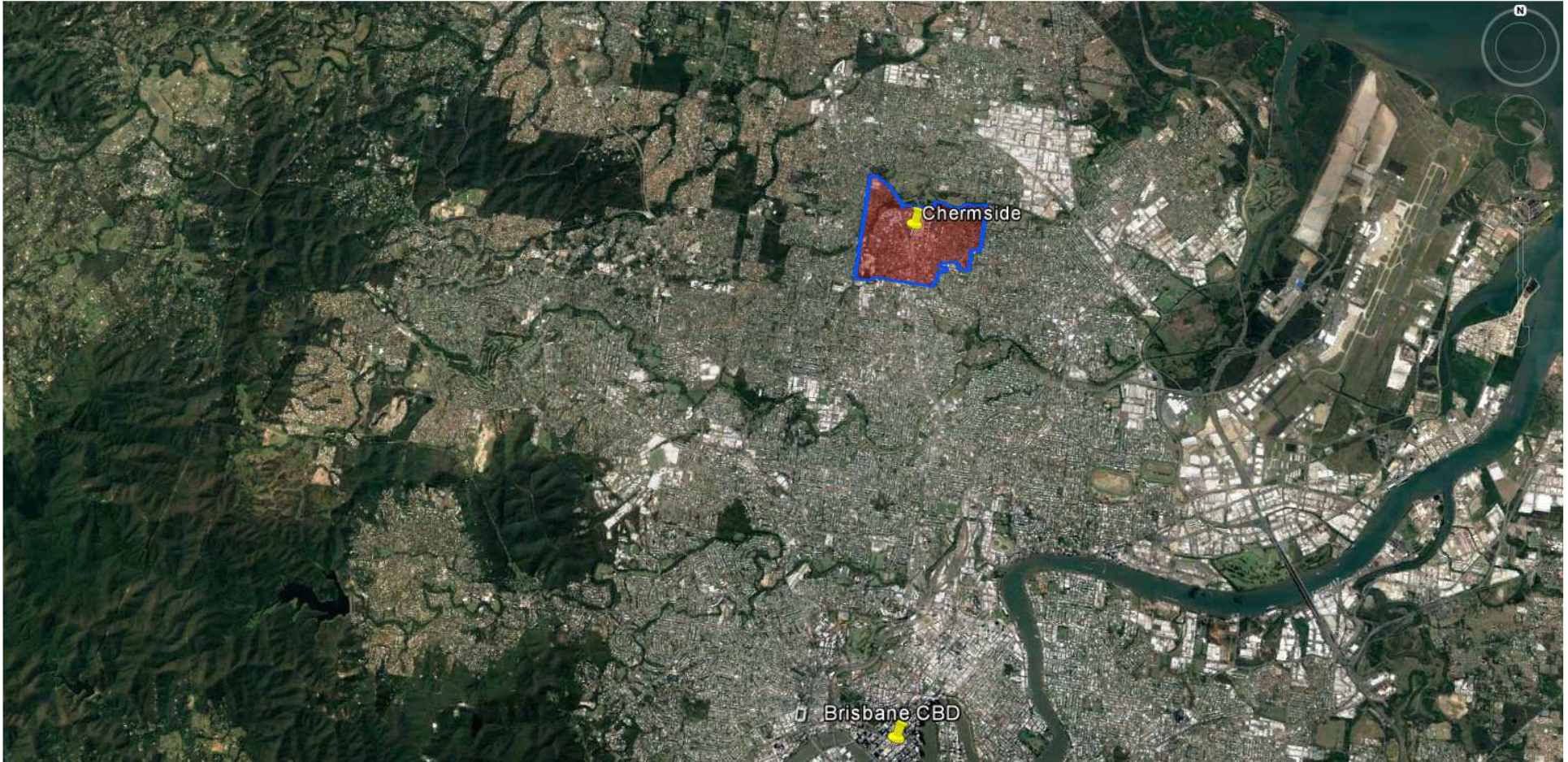




Queensland Schools Planning Reference Committee  
 Cross-Sectoral New Schools Demand Mapping 2016-2036  
**Brisbane City Council**  
**SA2 Cluster**  
**Fortitude Valley; Newstead-Bowen Hills; Albion**

Findings			
Primary		Secondary	
1st Decade to 2026	2nd Decade to 2036	1st Decade to 2026	2nd Decade to 2036
1-2 new primary schools may be required in the first decade	1-2 new primary schools may be required in the second decade	1-2 new secondary schools may be required in the first decade	0 - 1 new secondary school may be required in the second decade



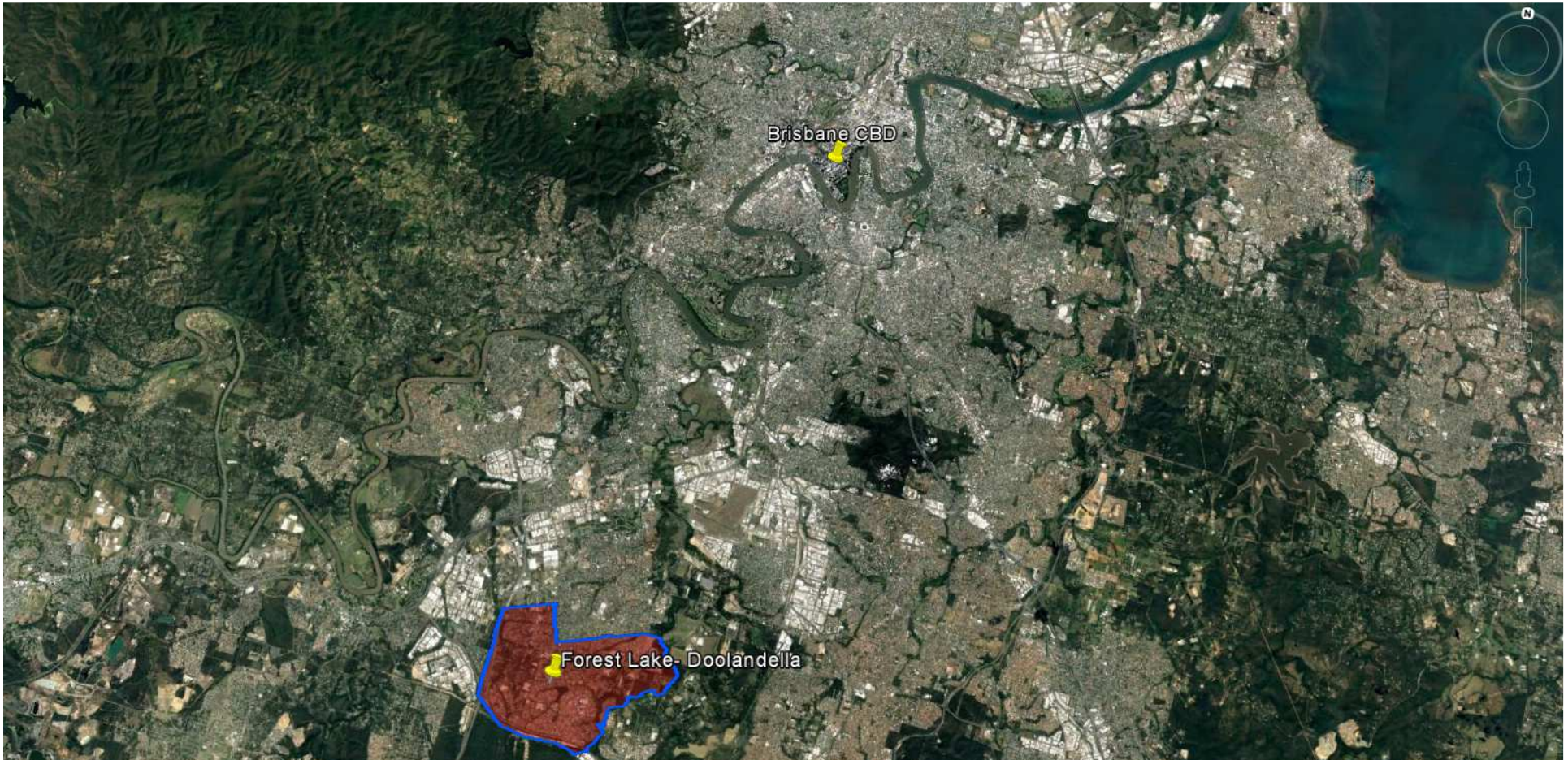


Queensland Schools Planning Reference Committee  
 Cross-Sectoral New Schools Demand Mapping 2016-2036  
**Brisbane City Council**  
**SA2**  
**Chermiside**

Findings

Primary		Secondary	
1st Decade to 2026	2nd Decade to 2036	1st Decade to 2026	2nd Decade to 2036
No new primary schools may be required in the first decade. Expansion of existing sites likely to capture growth	No new primary schools may be required in the second decade. Expansion of existing sites likely to capture growth	No new secondary schools are likely to be required in the first decade. Expansion of existing sites likely to capture growth	No new secondary schools are likely to be required in the second decade. Expansion of existing sites likely to capture growth





Queensland Schools Planning Reference Committee  
 Cross-Sectoral New Schools Demand Mapping 2016-2036  
**Brisbane City Council**  
**SA2**  
**Forest Lake-Doolandella**

Findings			
Primary		Secondary	
1st Decade to 2026	2nd Decade to 2036	1st Decade to 2026	2nd Decade to 2036
No new primary schools are likely to be required in the first decade. Expansion of existing sites likely to capture growth	No new primary schools are likely to be required in the second decade. Expansion of existing sites likely to capture growth	No new secondary schools are likely to be required in the first decade. Expansion of existing sites likely to capture growth	No new secondary schools are likely to be required in the second decade. Expansion of existing sites likely to capture growth

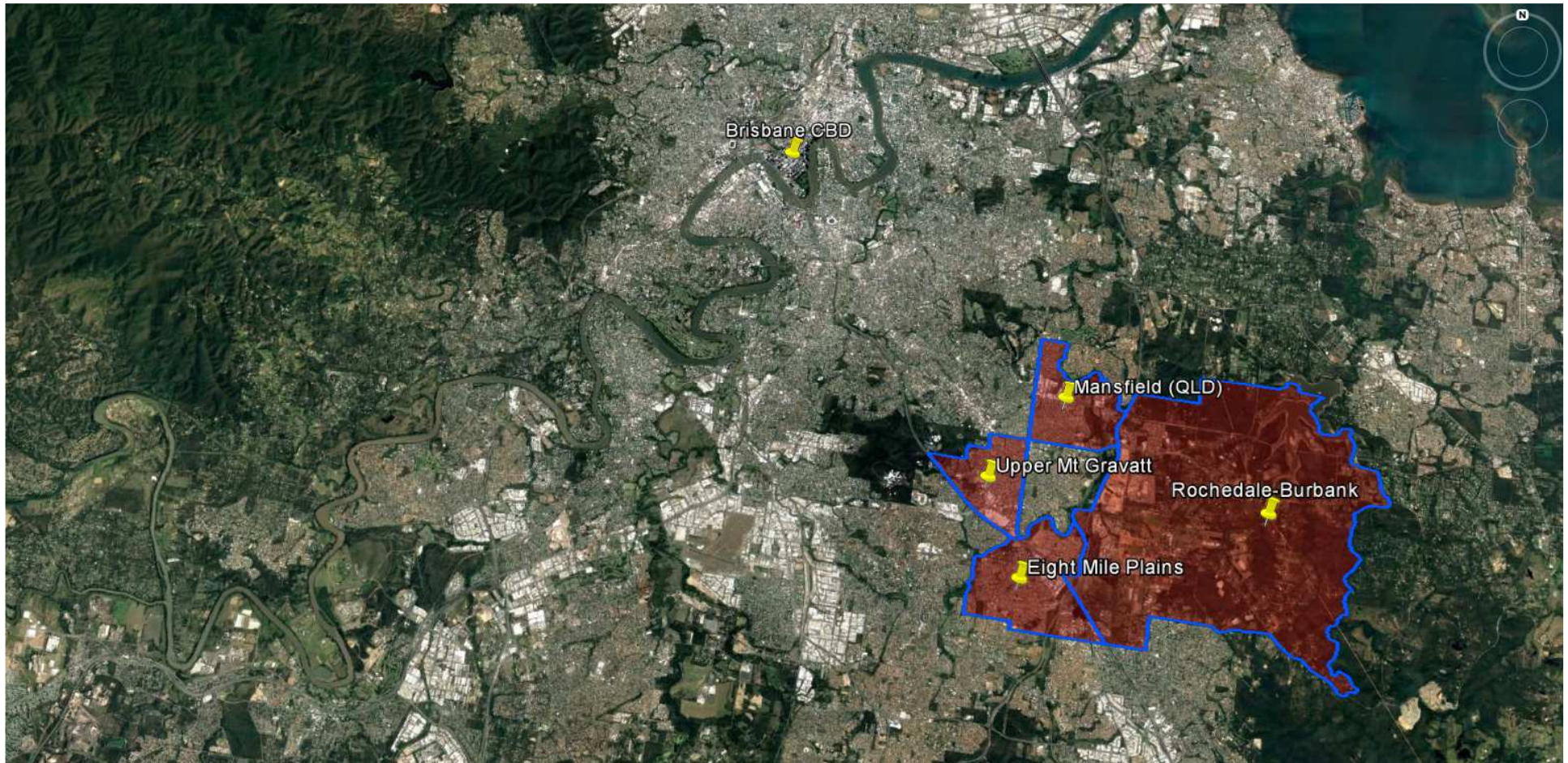




Queensland Schools Planning Reference Committee  
 Cross-Sectoral New Schools Demand Mapping 2016-2036  
**Brisbane City Council**  
**SA2**  
**Inala-Richlands**

Findings			
Primary		Secondary	
1st Decade to 2026	2nd Decade to 2036	1st Decade to 2026	2nd Decade to 2036
1-2 new primary schools may be required in the first decade	1-2 new primary schools may be required in the second decade	1 new secondary school may be required in the first decade	0 - 1 new secondary school may be required in the second decade



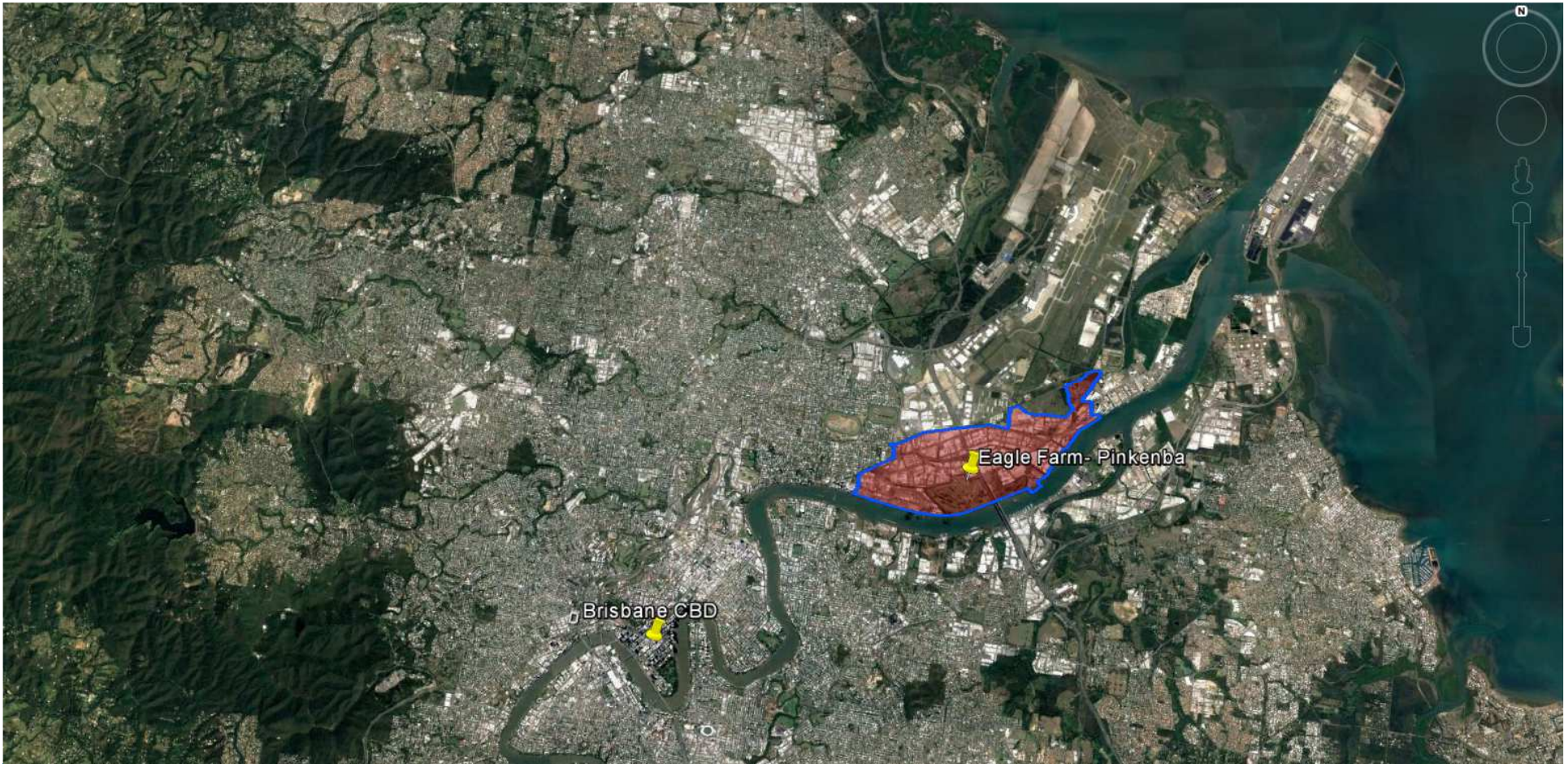


Queensland Schools Planning Reference Committee  
 Cross-Sectoral New Schools Demand Mapping 2016-2036  
**Brisbane City Council**  
**SA2 Cluster**

**Eight Mile Plains; Upper Mt Gravatt; Mansfield; Rochedale-Burbank**

Findings			
Primary		Secondary	
1st Decade to 2026	2nd Decade to 2036	1st Decade to 2026	2nd Decade to 2036
0-1 primary school may be required in the first decade	1-2 new primary schools may be required in the second decade	0-1 new secondary school may be required in the first decade	0-1 new secondary school may be required in the second decade



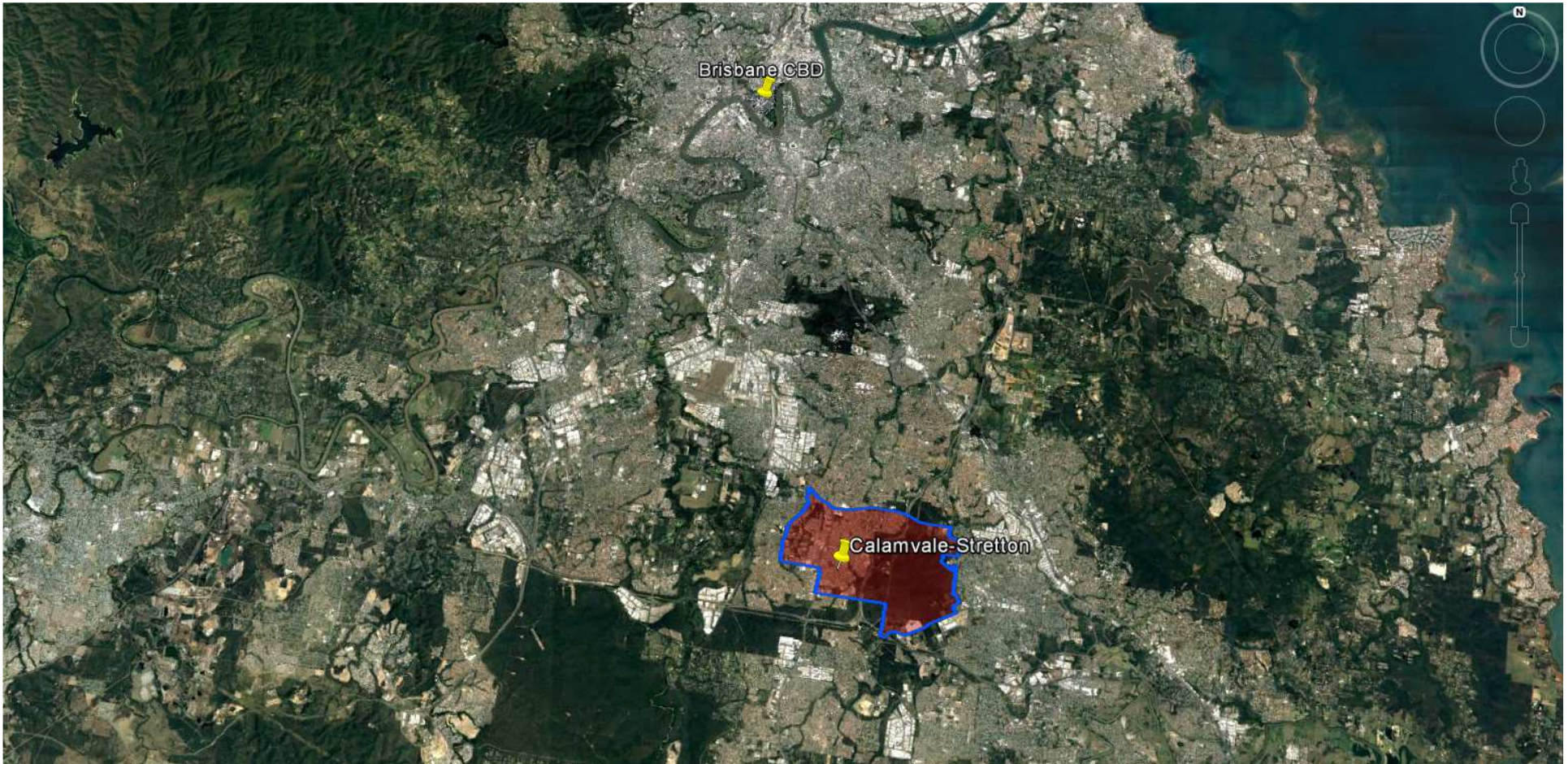


Queensland Schools Planning Reference Committee  
 Cross-Sectoral New Schools Demand Mapping 2016-2036  
**Brisbane City Council**  
**SA2**  
**Eagle Farm-Pinkenba**

Findings

Primary		Secondary	
1st Decade to 2026	2nd Decade to 2036	1st Decade to 2026	2nd Decade to 2036
0-1 primary school may be required in the first decade	0-1 primary school may be required in the second decade	No new secondary schools are likely to be required in the second decade	No new secondary schools are likely to be required in the second decade



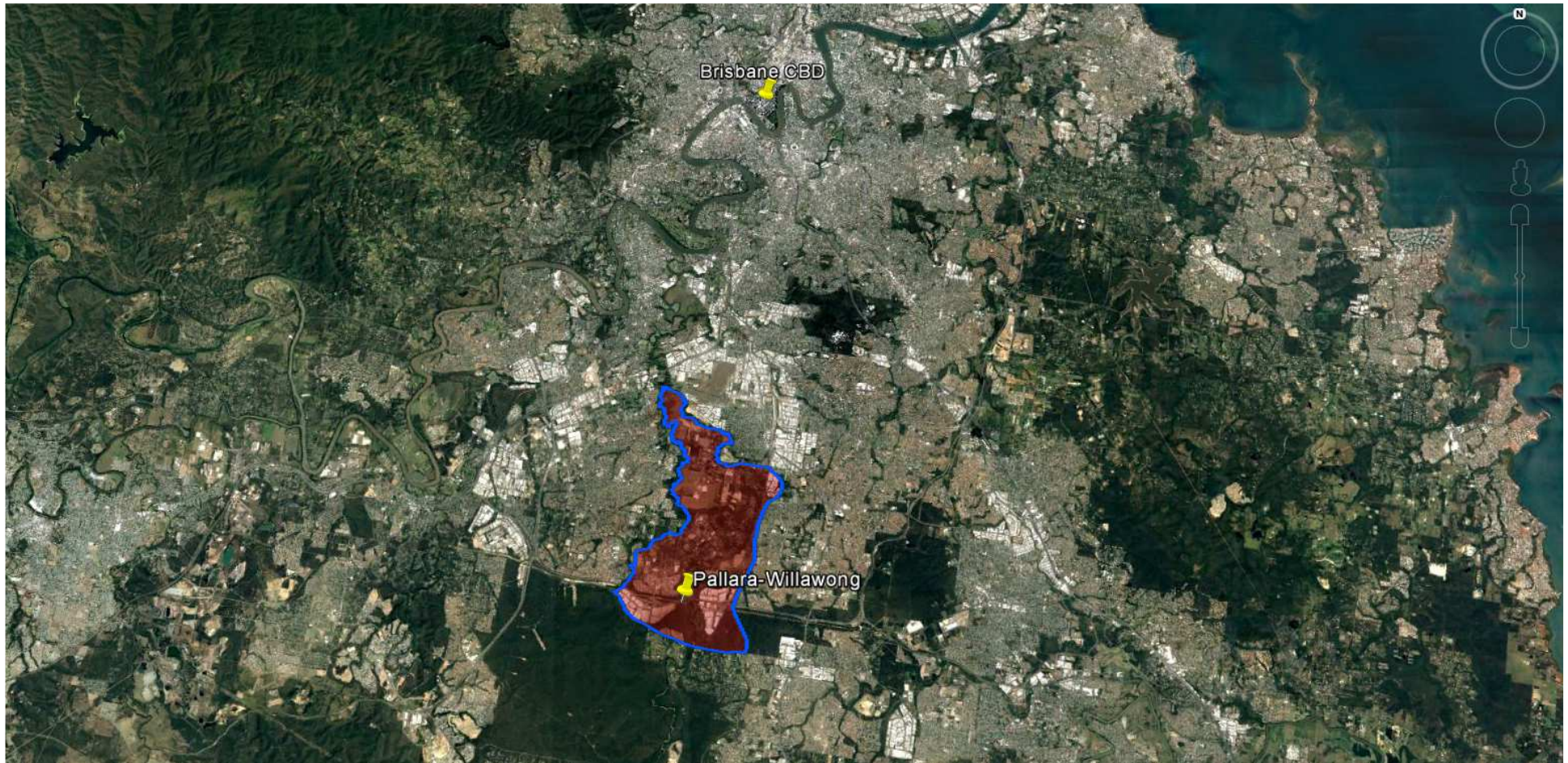


Queensland Schools Planning Reference Committee  
 Cross-Sectoral New Schools Demand Mapping 2016-2036  
**Brisbane City Council**  
**SA2**  
**Calamvale-Stretton**

Findings

Primary		Secondary	
1st Decade to 2026	2nd Decade to 2036	1st Decade to 2026	2nd Decade to 2036
0-1 primary school may be required in the first decade	No new primary schools may be required in the second decade	No new secondary schools are likely to be required in the second decade	No new secondary schools are likely to be required in the second decade



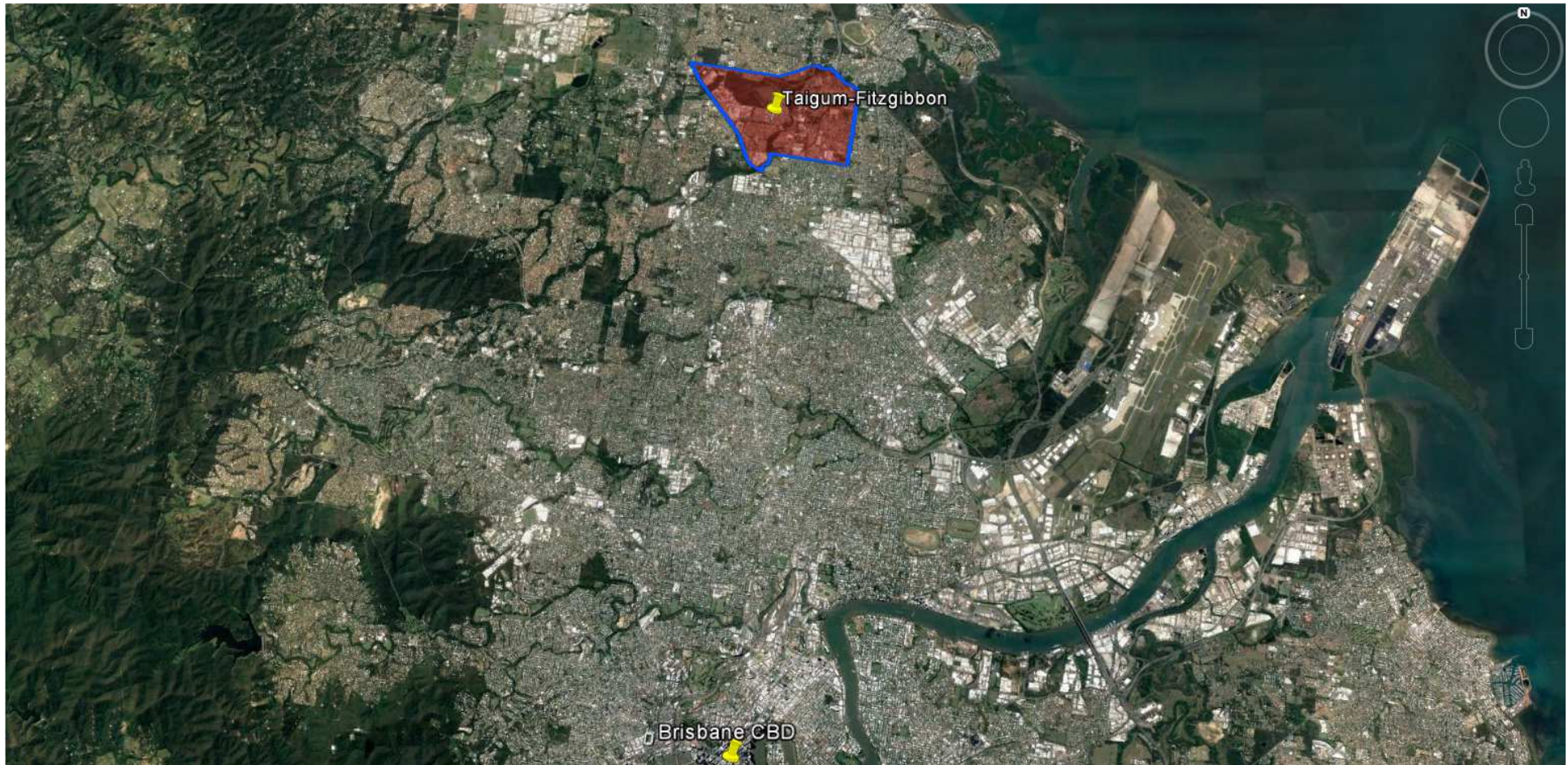


Queensland Schools Planning Reference Committee  
 Cross-Sectoral New Schools Demand Mapping 2016-2036  
**Brisbane City Council**  
**SA2**  
**Palarra-Willawong**

**Findings**

Primary		Secondary	
1st Decade to 2026	2nd Decade to 2036	1st Decade to 2026	2nd Decade to 2036
No new primary schools are likely to be required in the first decade	0-1 new primary school may be required in the second decade	No new secondary schools are likely to be required in the first decade	No new secondary schools are likely to be required in the second decade



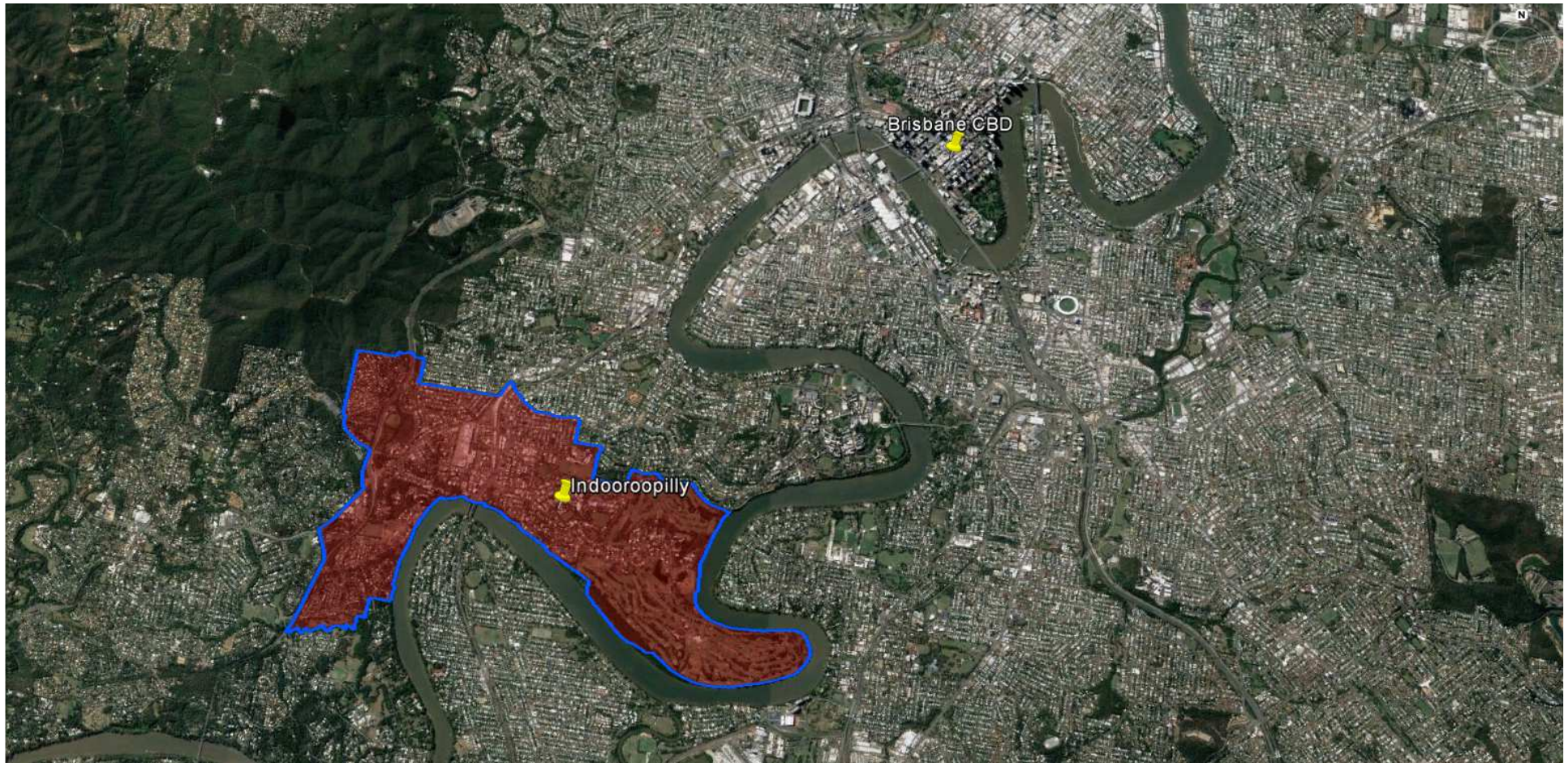


Queensland Schools Planning Reference Committee  
 Cross-Sectoral New Schools Demand Mapping 2016-2036  
**Brisbane City Council**  
**SA2**  
**Taigum-Fitzgibbon**

**Findings**

Primary		Secondary	
1st Decade to 2026	2nd Decade to 2036	1st Decade to 2026	2nd Decade to 2036
0-1 primary school may be required in the first decade	1 new primary school may be required in the second decade	1 new secondary school may be required in the first decade	No new secondary schools are likely to be required in the second decade



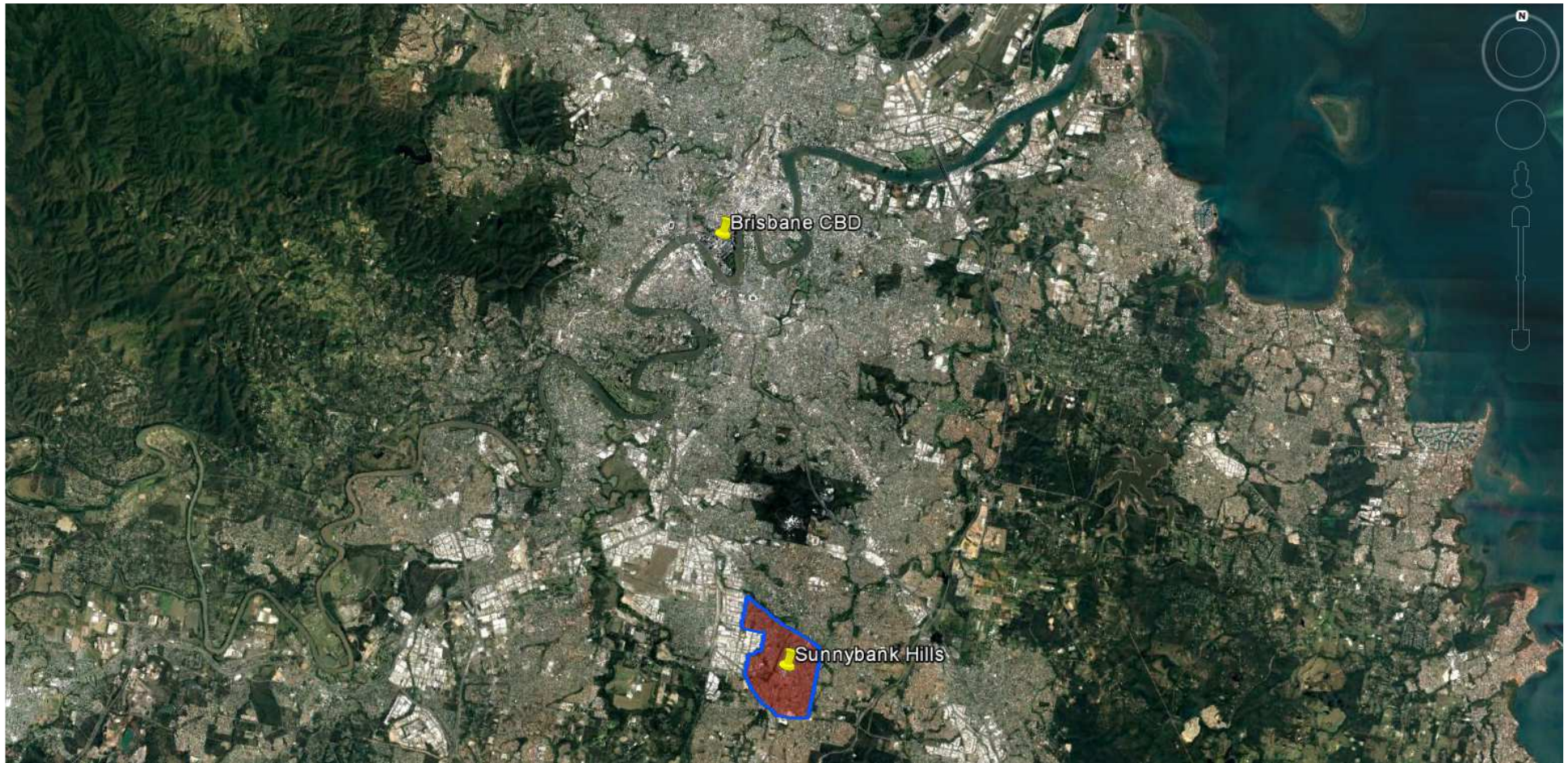


Queensland Schools Planning Reference Committee  
 Cross-Sectoral New Schools Demand Mapping 2016-2036  
**Brisbane City Council**  
**SA2**  
**Indooroopilly**

Findings

Primary		Secondary	
1st Decade to 2026	2nd Decade to 2036	1st Decade to 2026	2nd Decade to 2036
0-1 new primary school may be required in the first decade	No new primary schools are likely to be required in the second decade	No new secondary schools are likely to be required in the first decade. Expansion of existing sites likely to capture growth	No new secondary schools are likely to be required in the second decade

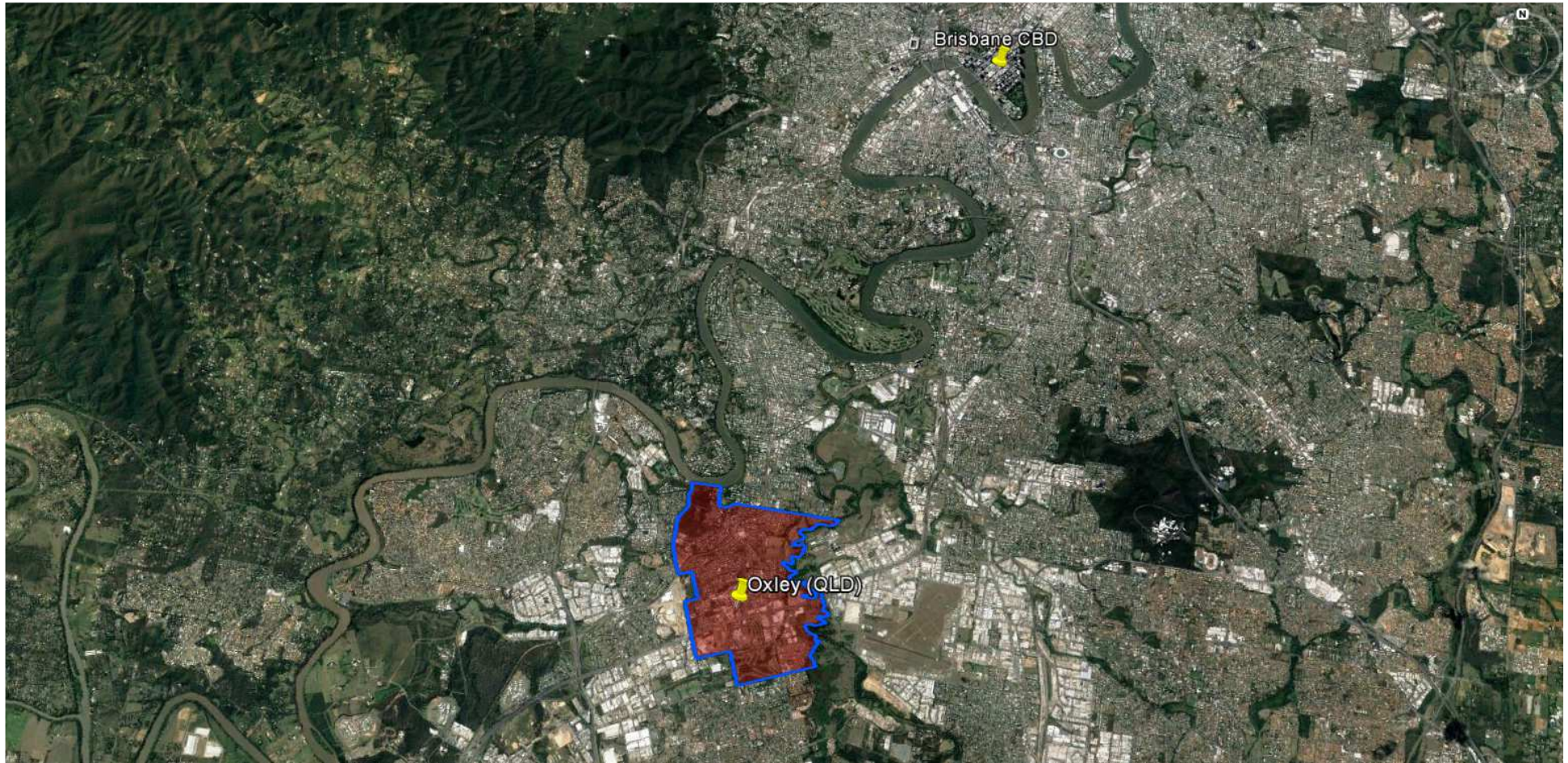




Queensland Schools Planning Reference Committee  
 Cross-Sectoral New Schools Demand Mapping 2016-2036  
**Brisbane City Council**  
**SA2**  
**Sunnybank Hills**

Findings			
Primary		Secondary	
1st Decade to 2026	2nd Decade to 2036	1st Decade to 2026	2nd Decade to 2036
No new primary schools are likely to be required in the second decade	No new primary schools are likely to be required in the second decade	No new secondary schools are likely to be required in the first decade	No new secondary schools are likely to be required in the second decade





Queensland Schools Planning Reference Committee  
 Cross-Sectoral New Schools Demand Mapping 2016-2036  
**Brisbane City Council**  
**SA2**  
**Oxley**

Findings

Primary		Secondary	
1st Decade to 2026	2nd Decade to 2036	1st Decade to 2026	2nd Decade to 2036
1 new primary school may be required in the first decade	No new primary schools are likely to be required in the second decade	No new secondary schools are likely to be required in the first decade	No new secondary schools are likely to be required in the second decade