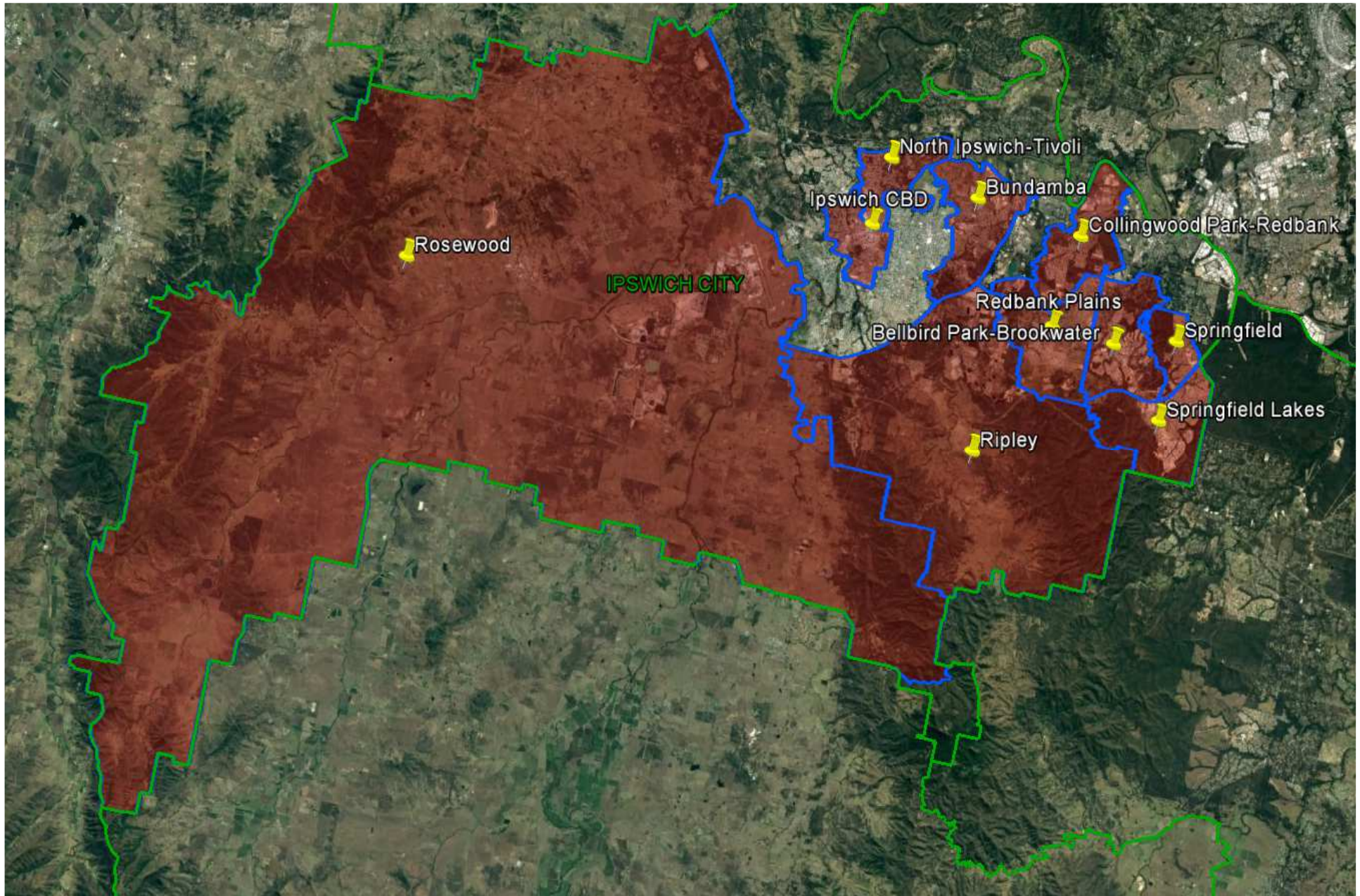


Queensland Schools Planning Reference Committee  
Cross-Sectoral New Schools Demand Mapping  
2016-2036

## Ipswich City Council

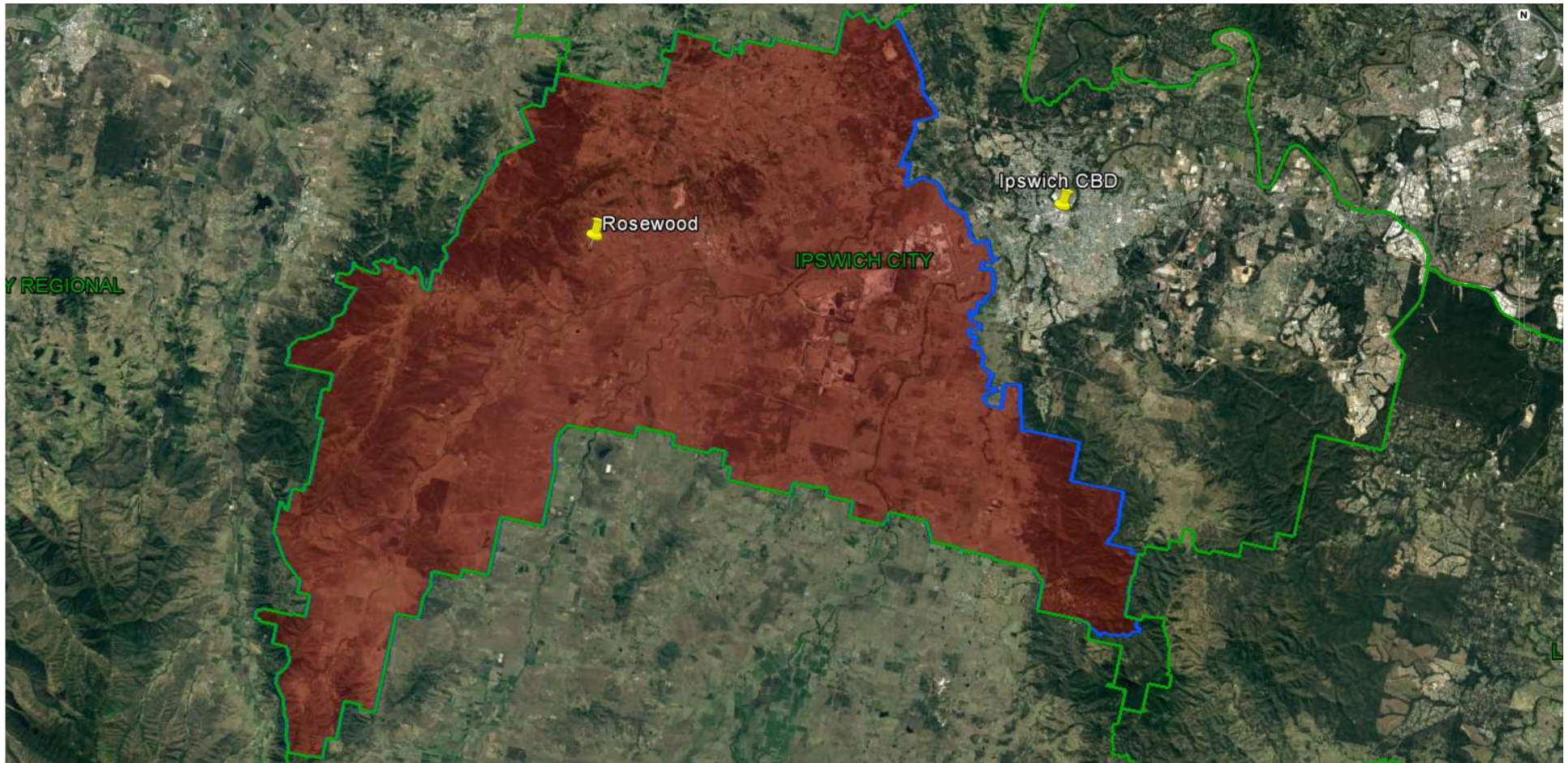
### Investigated SA2

- Rosewood
- Bundamba; Ipswich - Central
  - Ripley
- Bellbird Park – Brookwater; Collingwood Park – Redbank; Redbank Plains
  - Springfield; Springfield Lakes
    - North Ipswich - Tivoli



Queensland Schools Planning Reference Committee  
**SA2 studied in the Ipswich City Council area**

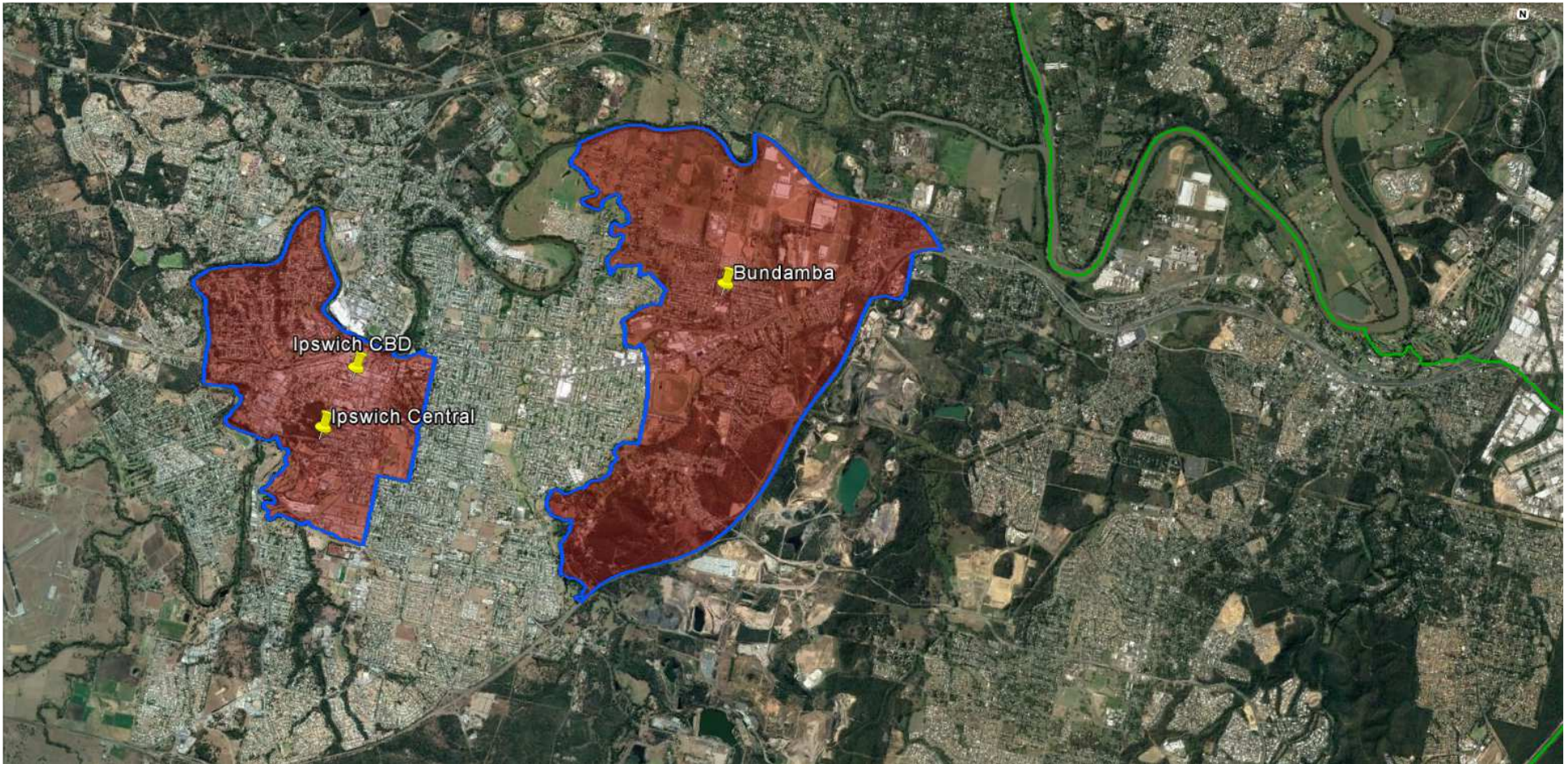




Queensland Schools Planning Reference Committee  
 Cross-Sectoral New Schools Demand Mapping 2016-2036  
**Ipswich City Council**  
**SA2**  
**Rosewood**

| Findings   |  |  |  |
|--|--|--|--|
| Primary  |  | Secondary  |  |
| 1st Decade to 2026                                       | 2nd Decade to 2036   | 1st Decade to 2026   | 2nd Decade to 2036   |
| 1 new primary school may be required in the first decade | 2-3 new primary schools may be required in the second decade | 1 new secondary school may be required in the first decade | 1-2 new secondary schools may be required in the second decade |

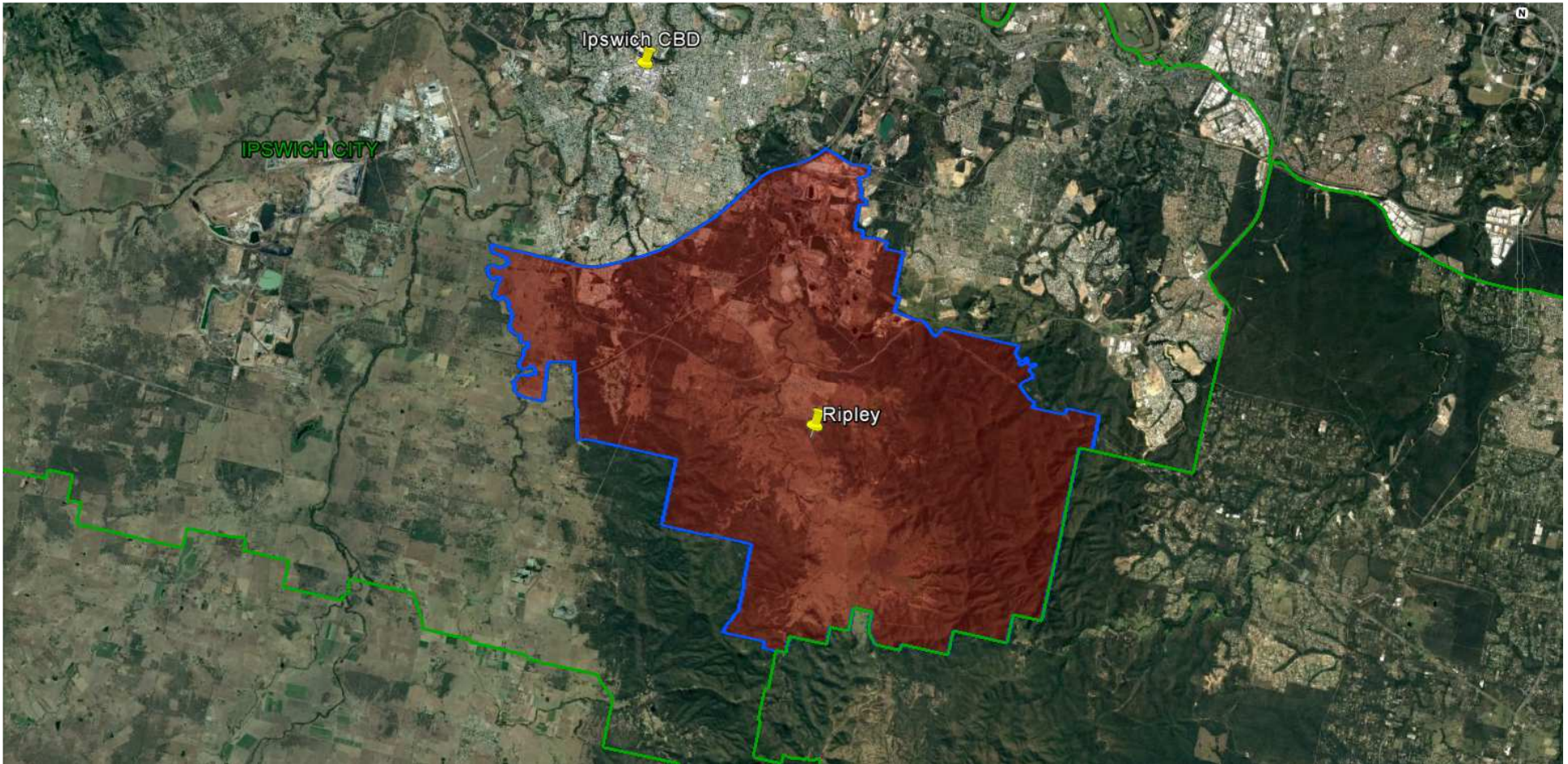




Queensland Schools Planning Reference Committee  
 Cross-Sectoral New Schools Demand Mapping 2016-2036  
**Ipswich City Council**  
**SA2 Cluster**  
**Ipswich Central; Bundamba**

| Findings   |   |  |   |
|--|---|--|---|
| Primary  |   | Secondary  |   |
| 1st Decade to 2026   | 2nd Decade to 2036  | 1st Decade to 2026   | 2nd Decade to 2036  |
| No new primary schools are likely to be required in the first decade | 1 new primary school may be required in the second decade | No new secondary schools are likely to be required in the first decade | 0 - 1 new secondary school may be required in the second decade |



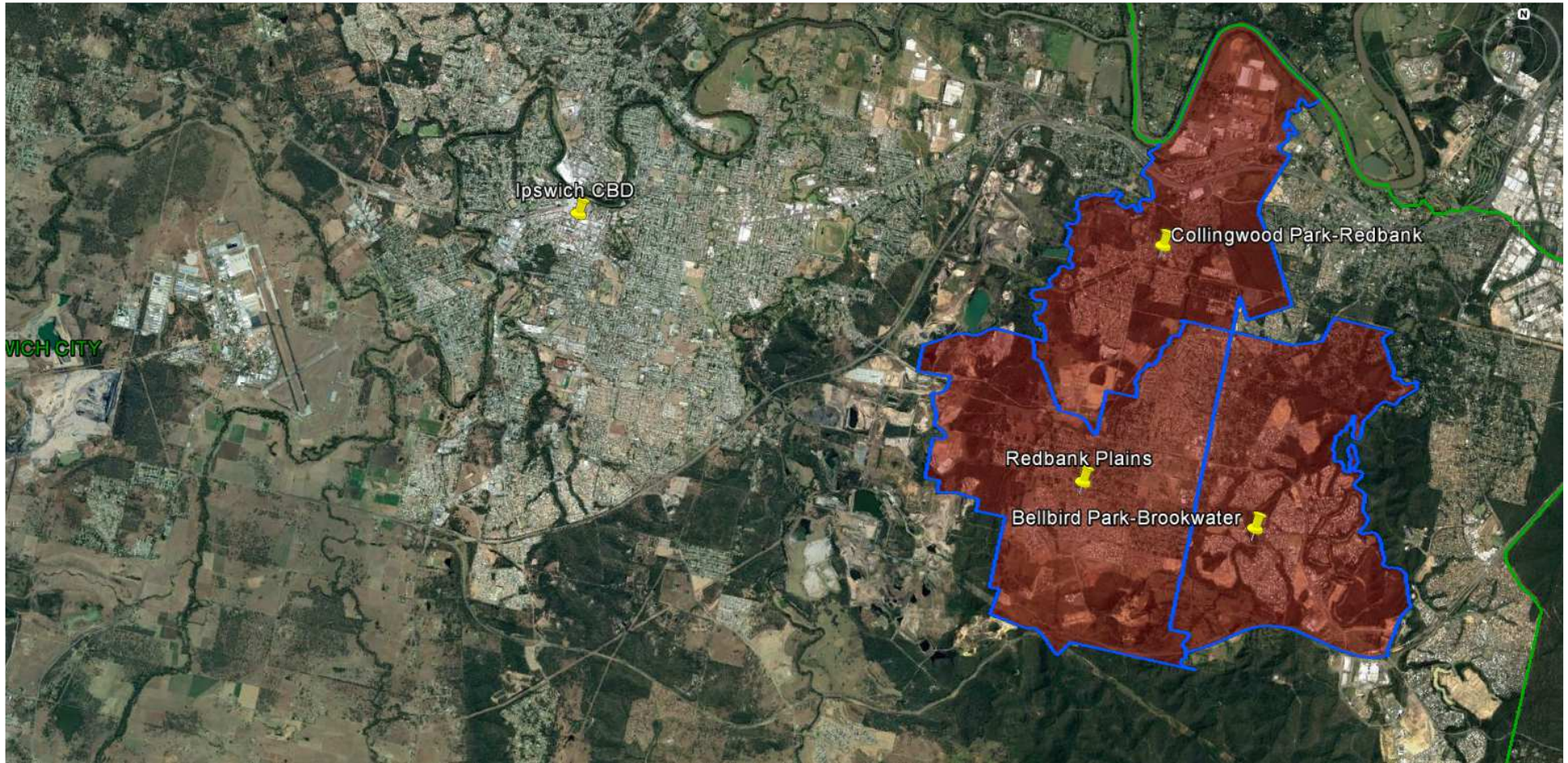


Queensland Schools Planning Reference Committee  
 Cross-Sectoral New Schools Demand Mapping 2016-2036  
**Ipswich City Council**  
**SA2**  
**Ripley**

Findings

| Primary   |  | Secondary   |  |
|---|--|---|--|
| 1st Decade to 2026  | 2nd Decade to 2036   | 1st Decade to 2026  | 2nd Decade to 2036   |
| 5-6 new primary schools may be required in the first decade | 5-7 new primary schools may be required in the second decade | 2-3 new secondary schools may be required in the first decade | 2 new secondary schools may be required in the second decade |



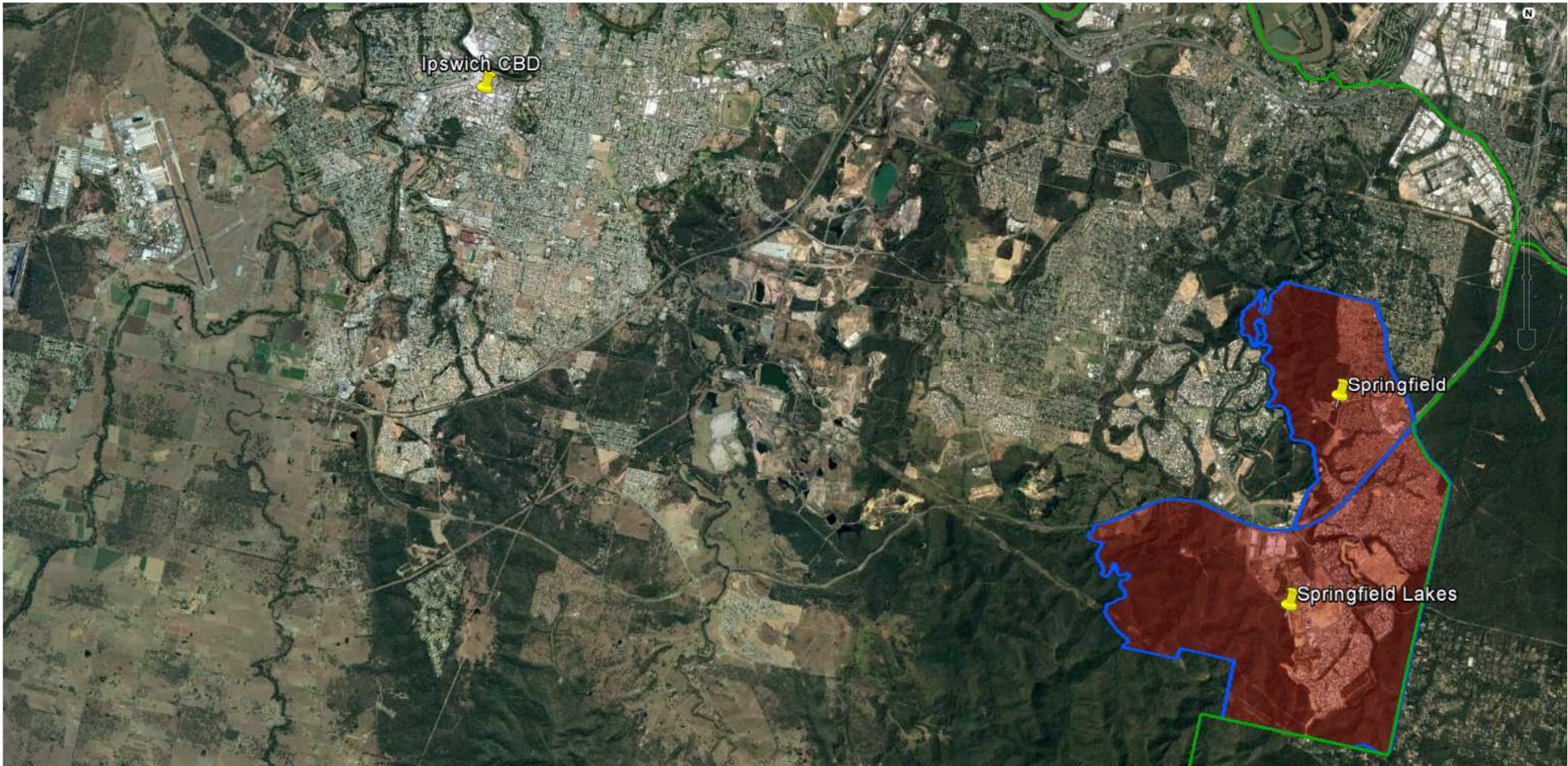


Queensland Schools Planning Reference Committee  
 Cross-Sectoral New Schools Demand Mapping 2016-2036  
**Ipswich City Council**  
**SA2 Cluster**

**Collingwood Park-Redbank; Redbank Plains; Bellbird Park-Brookwater**

| Findings  |  |  |   |
|---|--|--|---|
| Primary   |  | Secondary  |   |
| 1st Decade to 2026  | 2nd Decade to 2036   | 1st Decade to 2026   | 2nd Decade to 2036  |
| 1-2 new primary schools may be required in the first decade | 3-4 new primary schools may be required in the second decade | 1 new secondary school may be required in the first decade | 0 - 1 new secondary school may be required in the second decade |

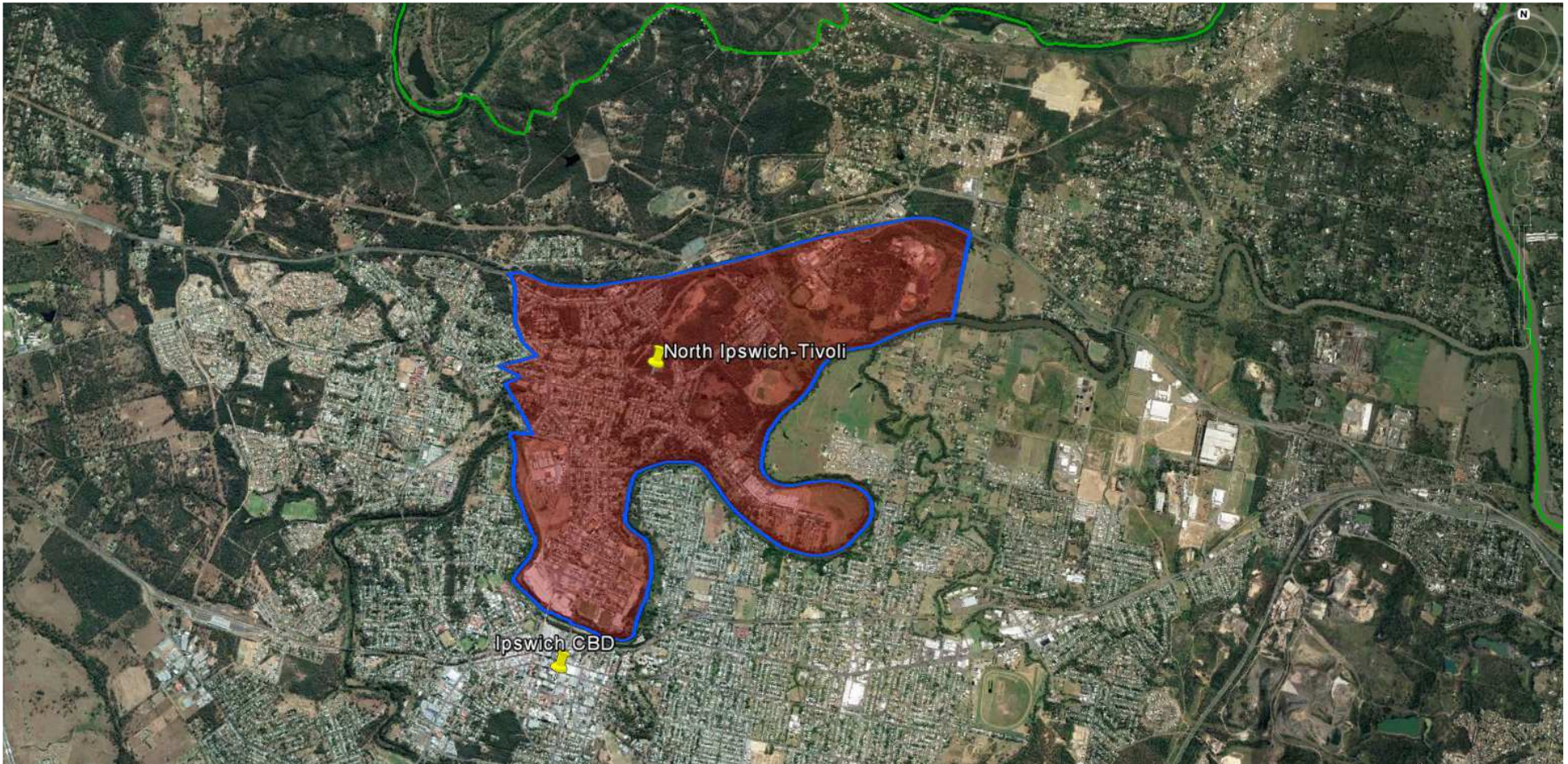




Queensland Schools Planning Reference Committee  
 Cross-Sectoral New Schools Demand Mapping 2016-2036  
**Ipswich City Council**  
**SA2 Cluster**  
**Springfield; Springfield Lakes**

| Findings   |  |   |   |
|--|--|---|---|
| Primary  |  | Secondary   |   |
| 1st Decade to 2026   | 2nd Decade to 2036   | 1st Decade to 2026  | 2nd Decade to 2036  |
| 0-1 new primary school may be required in the first decade | 2-3 new primary schools may be required in the second decade | 1-2 new secondary schools may be required in the first decade | 0 - 1 new secondary school may be required in the second decade |





Queensland Schools Planning Reference Committee  
 Cross-Sectoral New Schools Demand Mapping 2016-2036  
**Ipswich City Council**  
**SA2**  
**North Ipswich-Tivoli**

| Findings   |   |  |   |
|--|---|--|---|
| Primary  |   | Secondary  |   |
| 1st Decade to 2026   | 2nd Decade to 2036  | 1st Decade to 2026   | 2nd Decade to 2036  |
| No new primary schools are likely to be required in the first decade | 0-1 new primary school may be required in the second decade | No new secondary schools are likely to be required in the first decade | No new secondary schools are likely to be required in the second decade |