

## Queensland Schools Planning Reference Committee – Cross-Sectoral New Schools Demand Mapping 2021 to 2041 Ipswich City Council – 19 June 2019

New school recommendations reflect the potential need of new state and non-state primary and secondary schools based on an assessment of the 2018 edition Queensland Government population projections, local advice on population growth and available capacity within the existing school network. The growth SA2s, shown below, were selected for detailed assessment during the Demand Mapping Meeting. Areas for assessment are comprised of one or more Statistical Areas Level 2 (SA2s) which are established by the Australian Bureau of Statistics and are the smallest statistical area commonly used for a range of statistical information including population projections. Population projections used to inform this assessment are prepared by the Queensland Government Statistician's Office and can be accessed [here](#).

SA2 or Cluster	New government and non-government schools that may be required:				Estimated and Projected Primary (ages 5-11) and Secondary (ages 12-17) School-Age Population					
	2021 to 2031		2031 to 2041		Population 2016		Growth 2021 to 2031		Growth 2031 to 2041	
	Primary	Secondary	Primary	Secondary	Primary	Secondary	Primary	Secondary	Primary	Secondary
Ripley SA2	5 - 7	2 - 3	4 - 7	3 - 4	508	386	5,778	4,694	4,633	3,870
Springfield and Springfield Lakes SA2s	1 - 2	1 - 2	2 - 4	1 - 2	2,968	2,067	2,998	2,179	3,261	2,594
Bellbird Park - Brookwater SA2	2	1	1	0 - 1	1,752	1,174	2,180	1,612	1,149	1,010
Redbank Plans, Collingwood Park - Redbank and Goodna SA2s	1	1	0 - 1	0 - 1	5,209	3,571	1,172	993	896	739
Rosewood SA2	1 - 2	1 - 2	2 - 3	0 - 1	1,141	959	1,982	1,837	1,661	1,406
Ipswich Central, Ipswich East and Bundamba SA2s	0	0	1	0 - 1	3,184	2,534	518	628	752	655
Brassall, Ipswich - North, North Ipswich - Tivoli SA2s	0 - 1	0	0	0	2,291	1,806	362	307	160	135
<b>TOTAL</b>	<b>10 - 15</b>	<b>6 - 9</b>	<b>10 - 17</b>	<b>4 - 10</b>						

Note: Recommendations do not include new schools opening in 2020.

Map of Ipswich City Council showing the Statistical Areas Level 2 Assessed

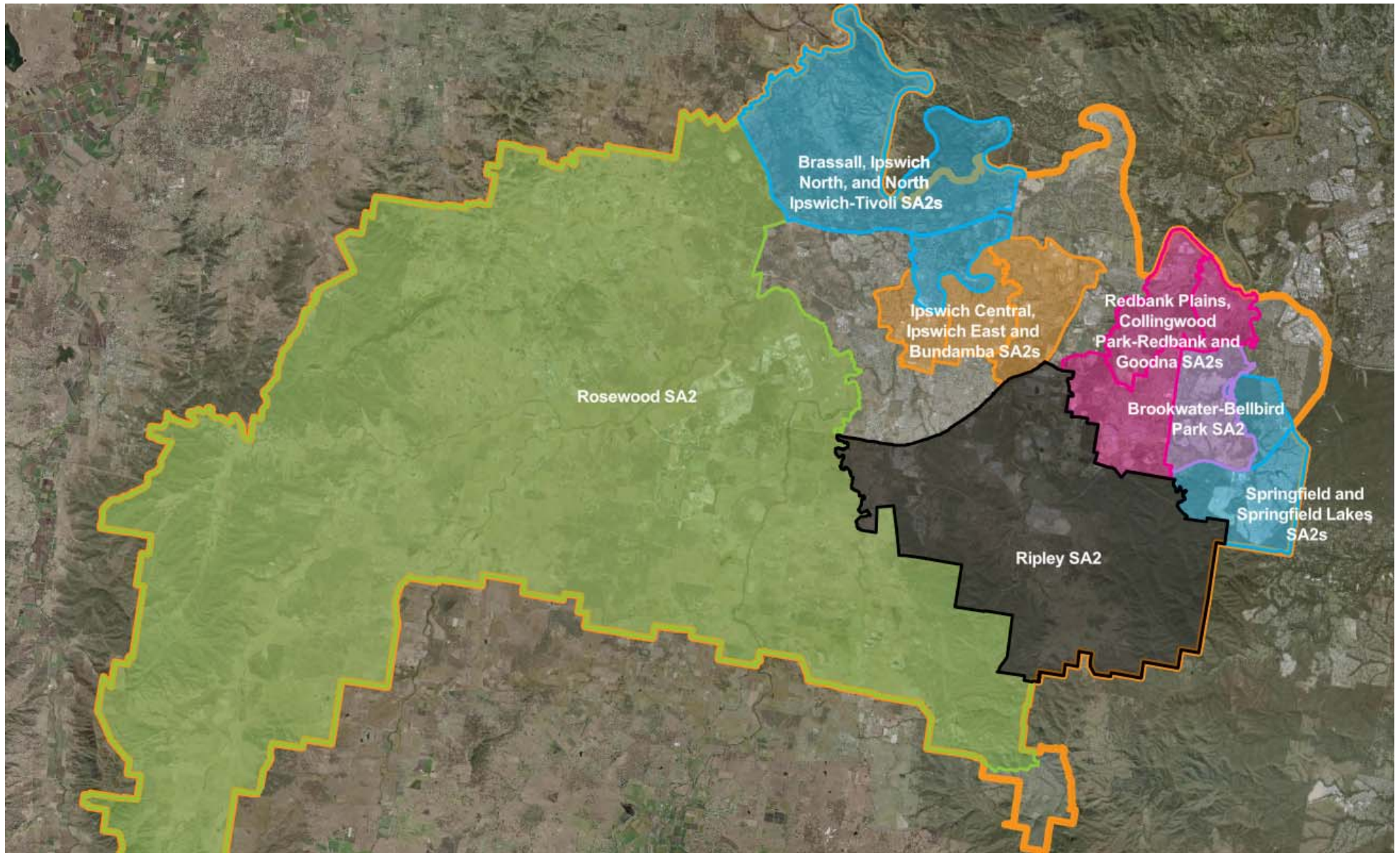


Image from Queensland Globe.



Queensland Government