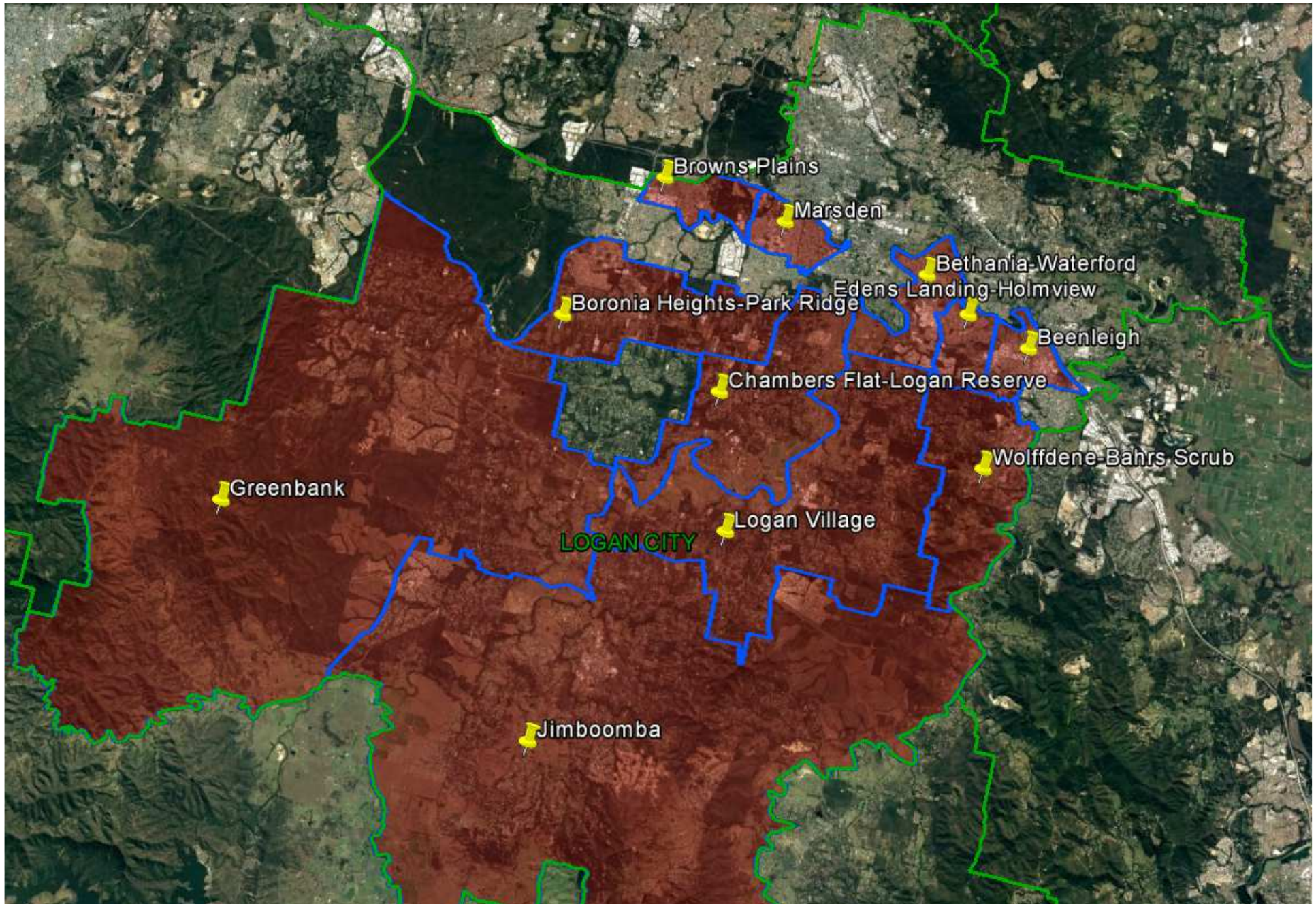


Queensland Schools Planning Reference Committee
Cross-Sectoral New Schools Demand Mapping
2016-2036

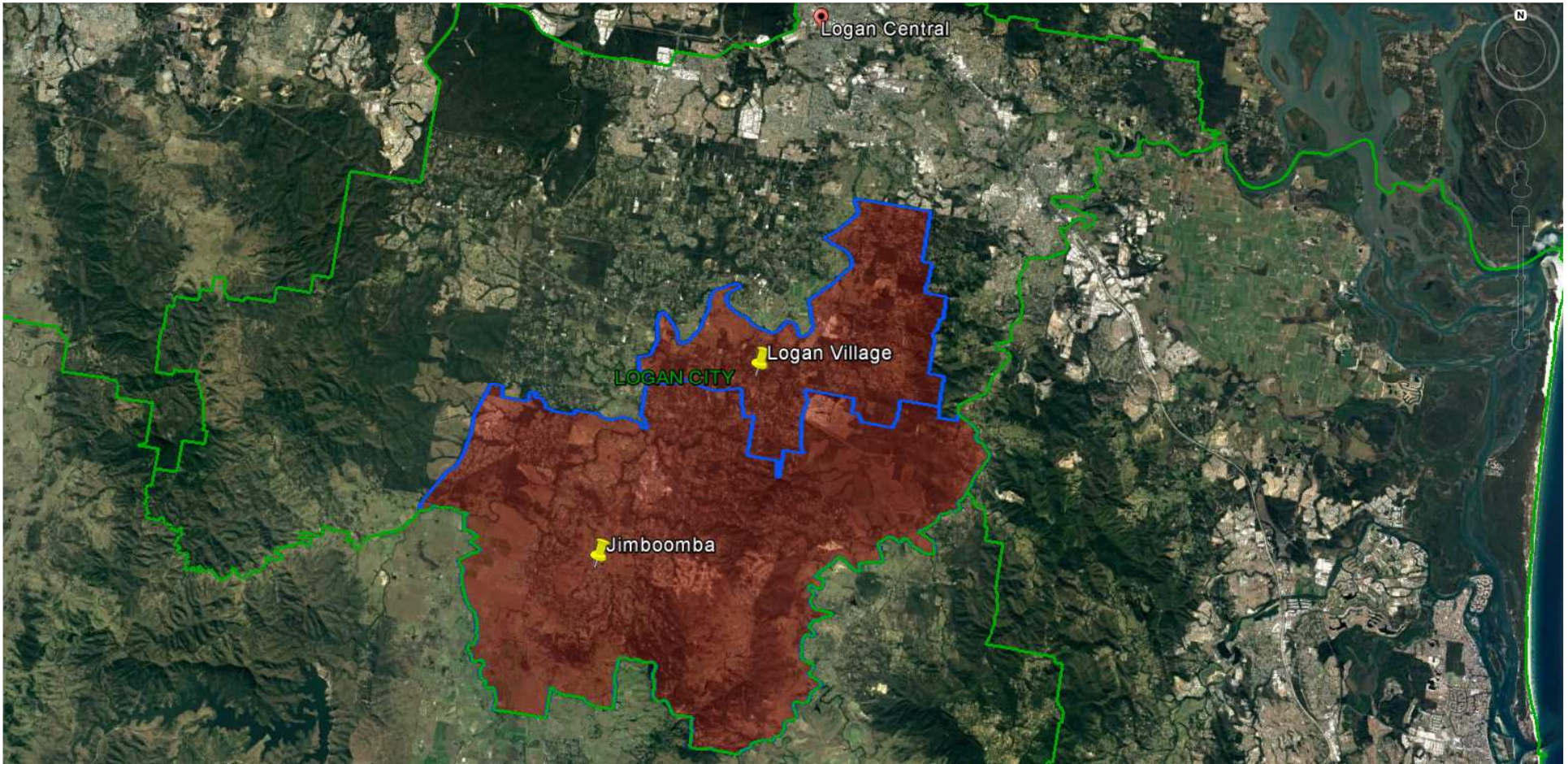
Logan City Council

Investigated SA2

- Jimboomba; Logan Village
- Chambers Flat - Logan Reserve; Boronia Heights - Park Ridge
 - Greenbank
- Wolffdene - Bahrs Scrub; Beenleigh; Edens Landing – Holmview; Bethania - Waterford
 - Browns Plains; Marsden

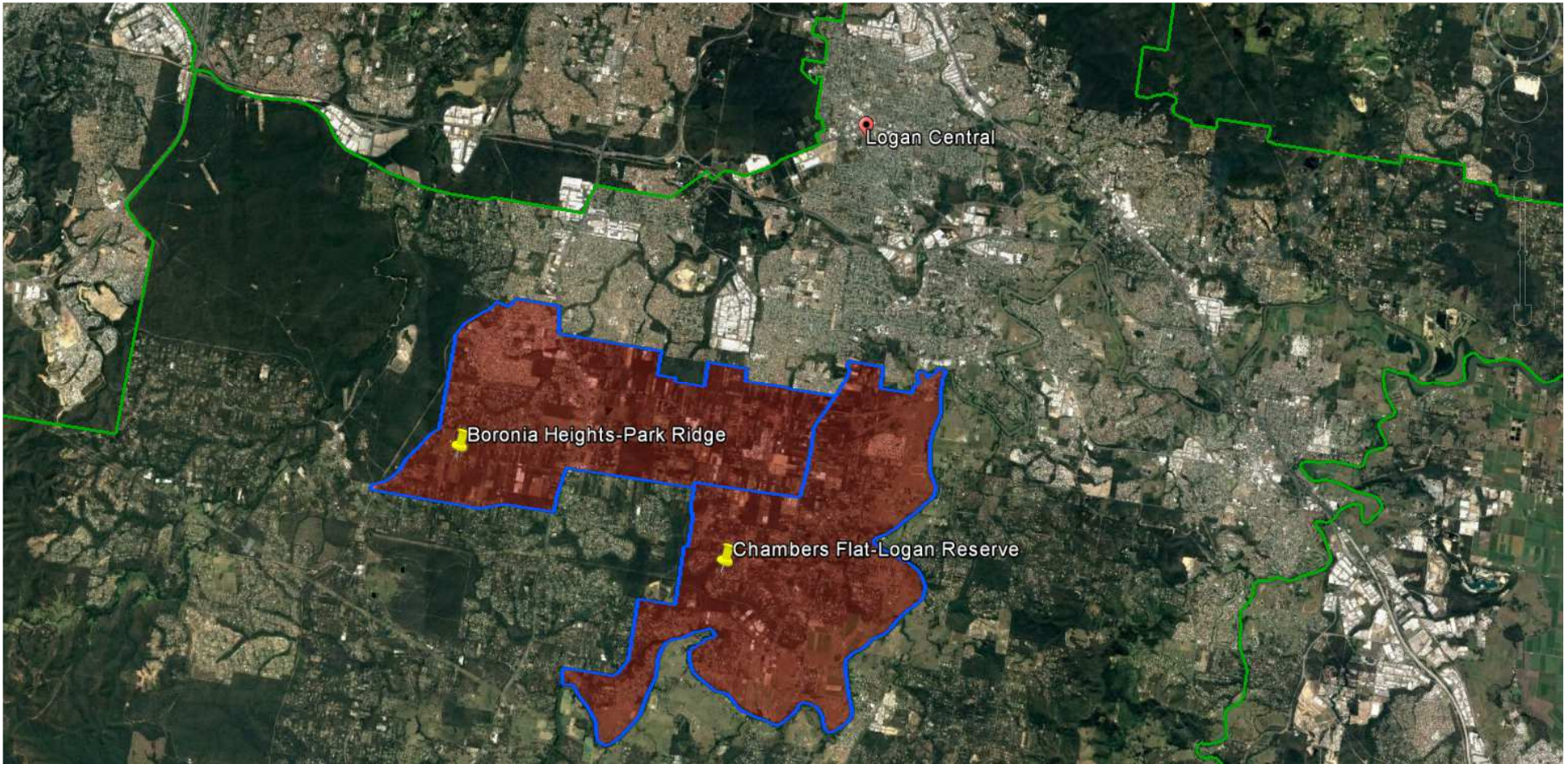


Queensland Schools Planning Reference Committee
SA2 studied in the Logan City Council area



Queensland Schools Planning Reference Committee
 Cross-Sectoral New Schools Demand Mapping 2016-2036
Logan City Council
SA2 Cluster
Jimboomba; Logan Village

Findings			
Primary		Secondary	
1st Decade to 2026	2nd Decade to 2036	1st Decade to 2026	2nd Decade to 2036
3-4 new primary schools may be required in the first decade	3-4 new primary schools may be required in the second decade	2 new secondary schools may be required in the first decade	2 new secondary schools may be required in the second decade

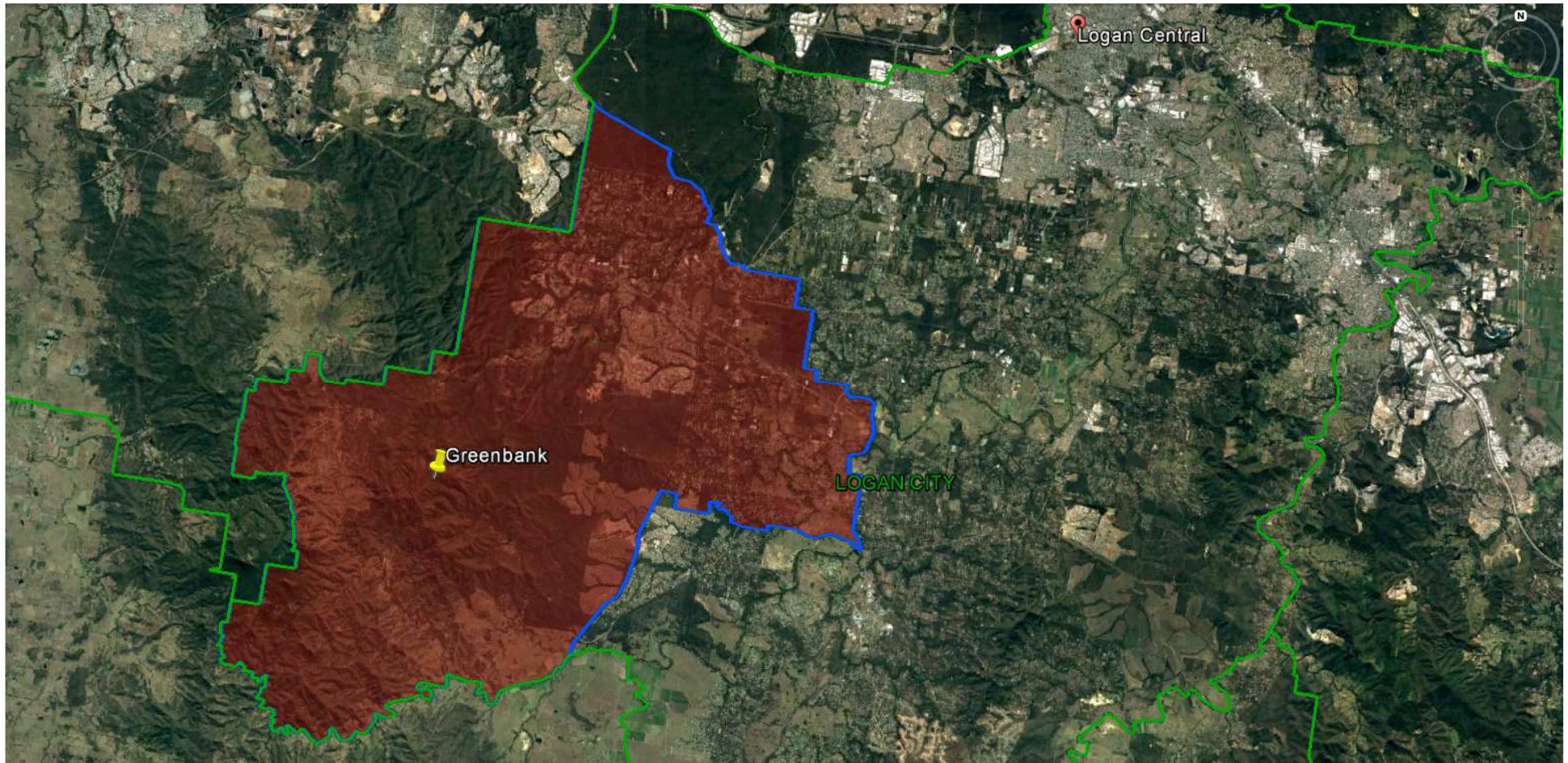


Queensland Schools Planning Reference Committee
 Cross-Sectoral New Schools Demand Mapping 2016-2036

**Logan City Council
 SA2 Cluster**

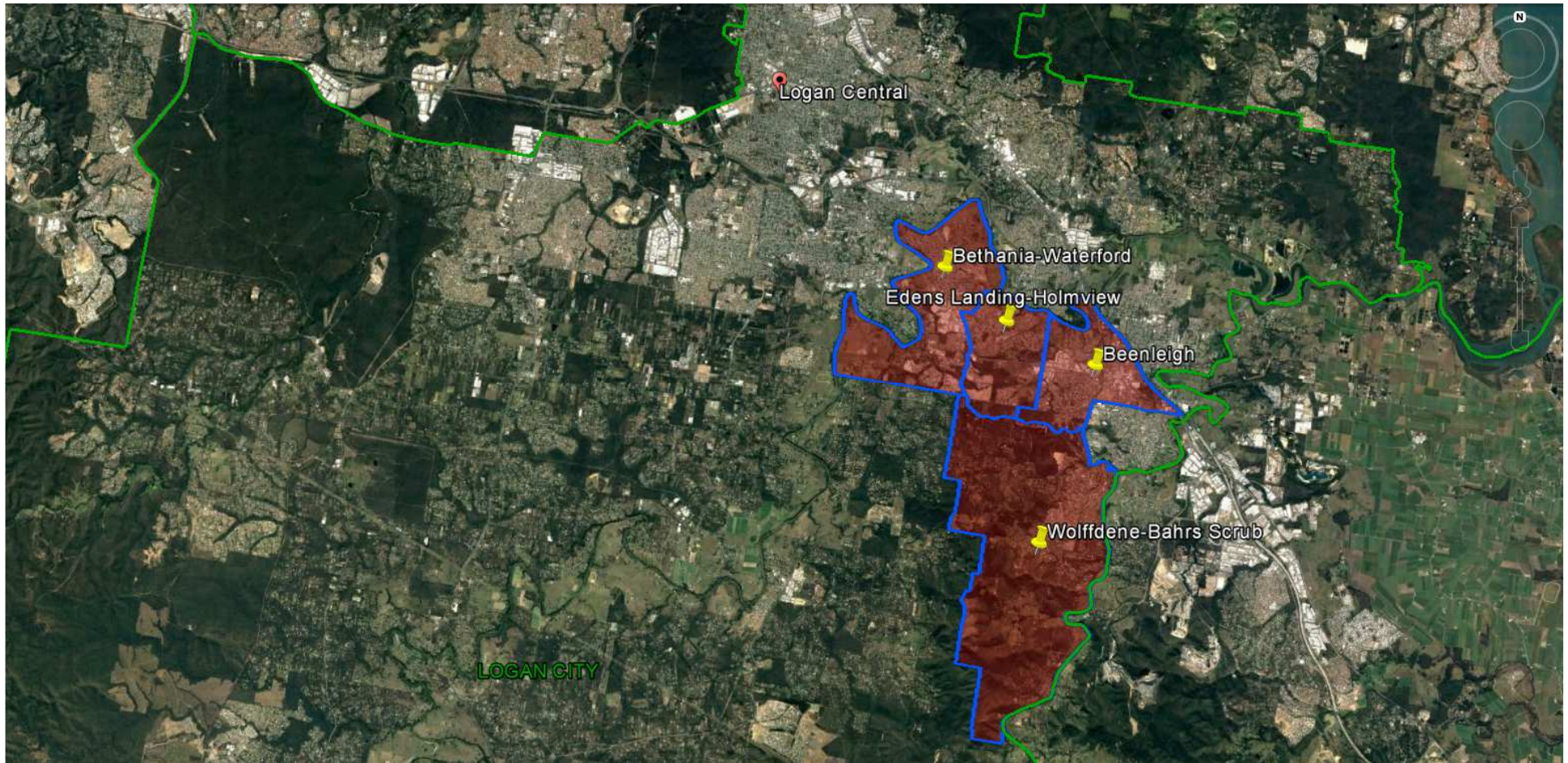
Boronia Heights-Park Ridge; Chambers Flat-Logan Reserve

Findings			
Primary		Secondary	
1st Decade to 2026	2nd Decade to 2036	1st Decade to 2026	2nd Decade to 2036
1-2 new primary schools may be required in the first decade	2-3 new primary schools may be required in the second decade	1 new secondary school may be required in the first decade	1 new secondary school may be required in the second decade



Queensland Schools Planning Reference Committee
 Cross-Sectoral New Schools Demand Mapping 2016-2036
Logan City Council
SA2
Greenbank

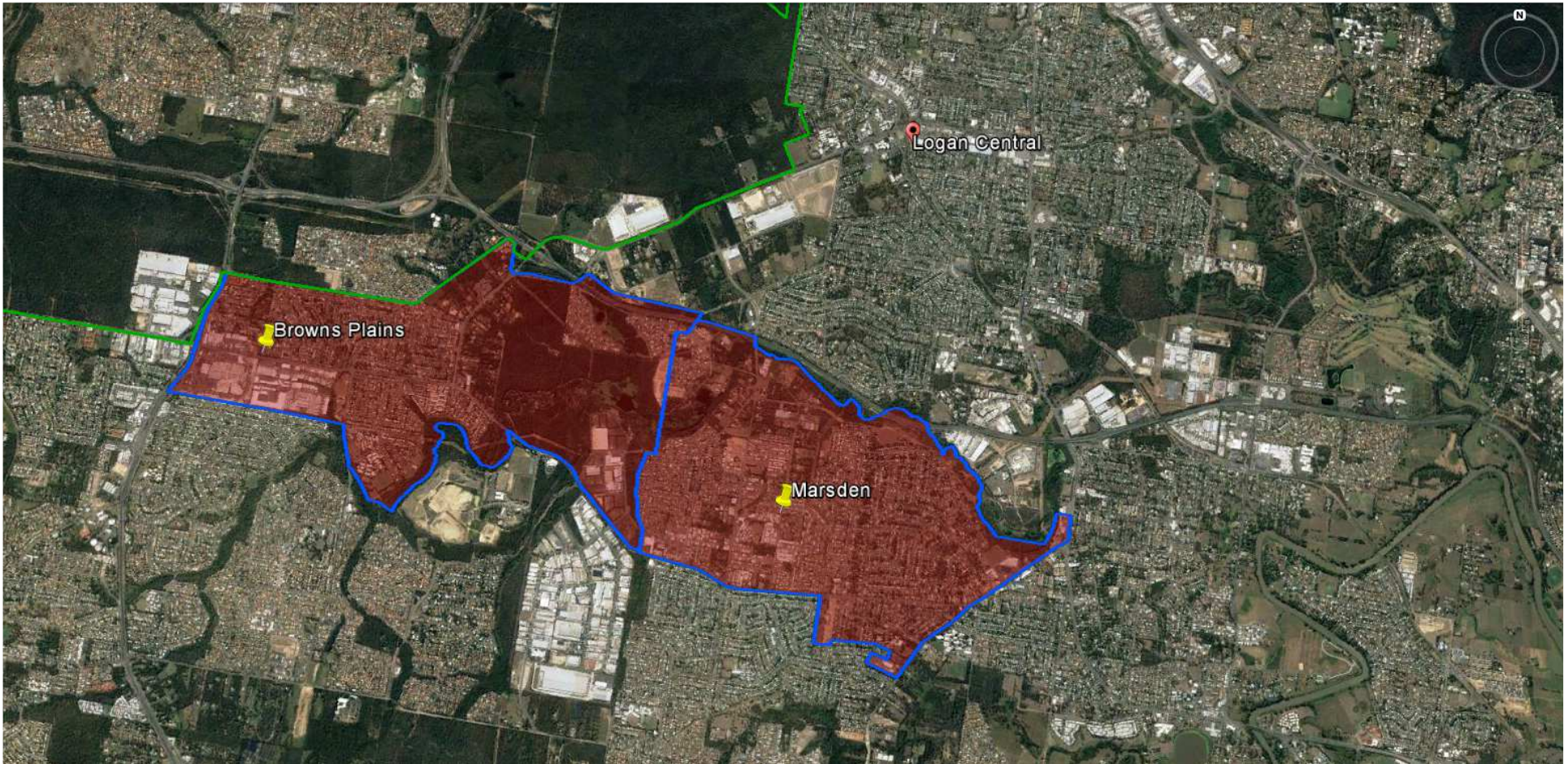
Findings			
Primary		Secondary	
1st Decade to 2026	2nd Decade to 2036	1st Decade to 2026	2nd Decade to 2036
2-3 new primary schools may be required in the first decade	3-4 new primary schools may be required in the second decade	1-2 new secondary schools may be required in the first decade	1-2 new secondary schools may be required in the second decade



Queensland Schools Planning Reference Committee
 Cross-Sectoral New Schools Demand Mapping 2016-2036
Logan City Council
SA2 Cluster

Bethania-Waterford; Edens Landing-Holmview; Beenleigh; Wolffdene-Bahrs Scrub

Findings			
Primary		Secondary	
1st Decade to 2026	2nd Decade to 2036	1st Decade to 2026	2nd Decade to 2036
1-2 new primary schools may be required in the first decade	1-2 new primary schools may be required in the second decade	1 new secondary school may be required in the first decade	0 - 1 new secondary school may be required in the second decade



Queensland Schools Planning Reference Committee
 Cross-Sectoral New Schools Demand Mapping 2016-2036
Logan City Council
SA2 Cluster
Browns Plain; Marsden

Findings			
Primary		Secondary	
1st Decade to 2026	2nd Decade to 2036	1st Decade to 2026	2nd Decade to 2036
No new primary schools are likely to be required in the first decade	No new primary schools are likely to be required in the second decade	No new secondary schools are likely to be required in the first decade	No new secondary schools are likely to be required in the second decade