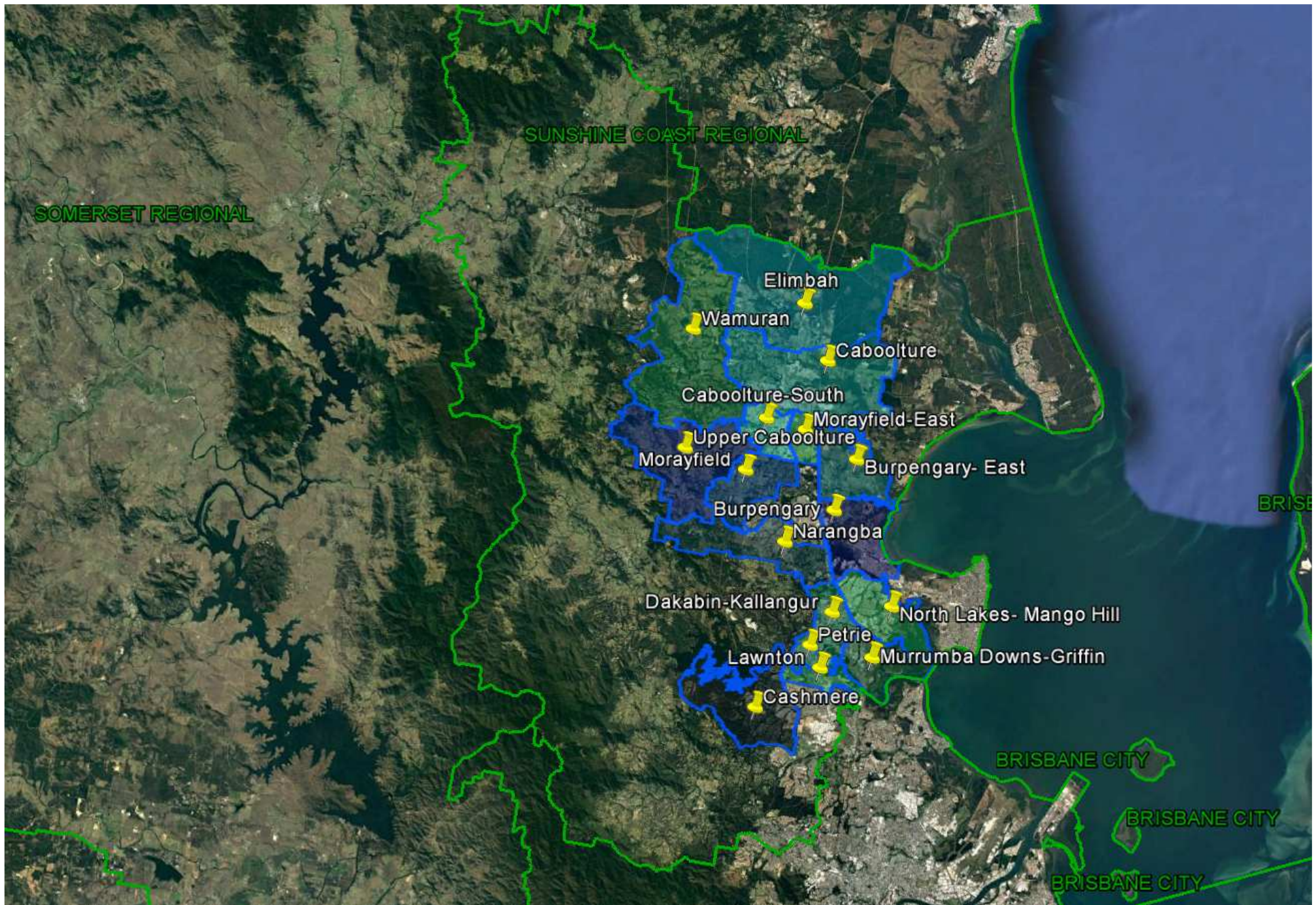


Queensland Schools Planning Reference Committee
Cross-Sectoral New Schools Demand Mapping
2016-2036

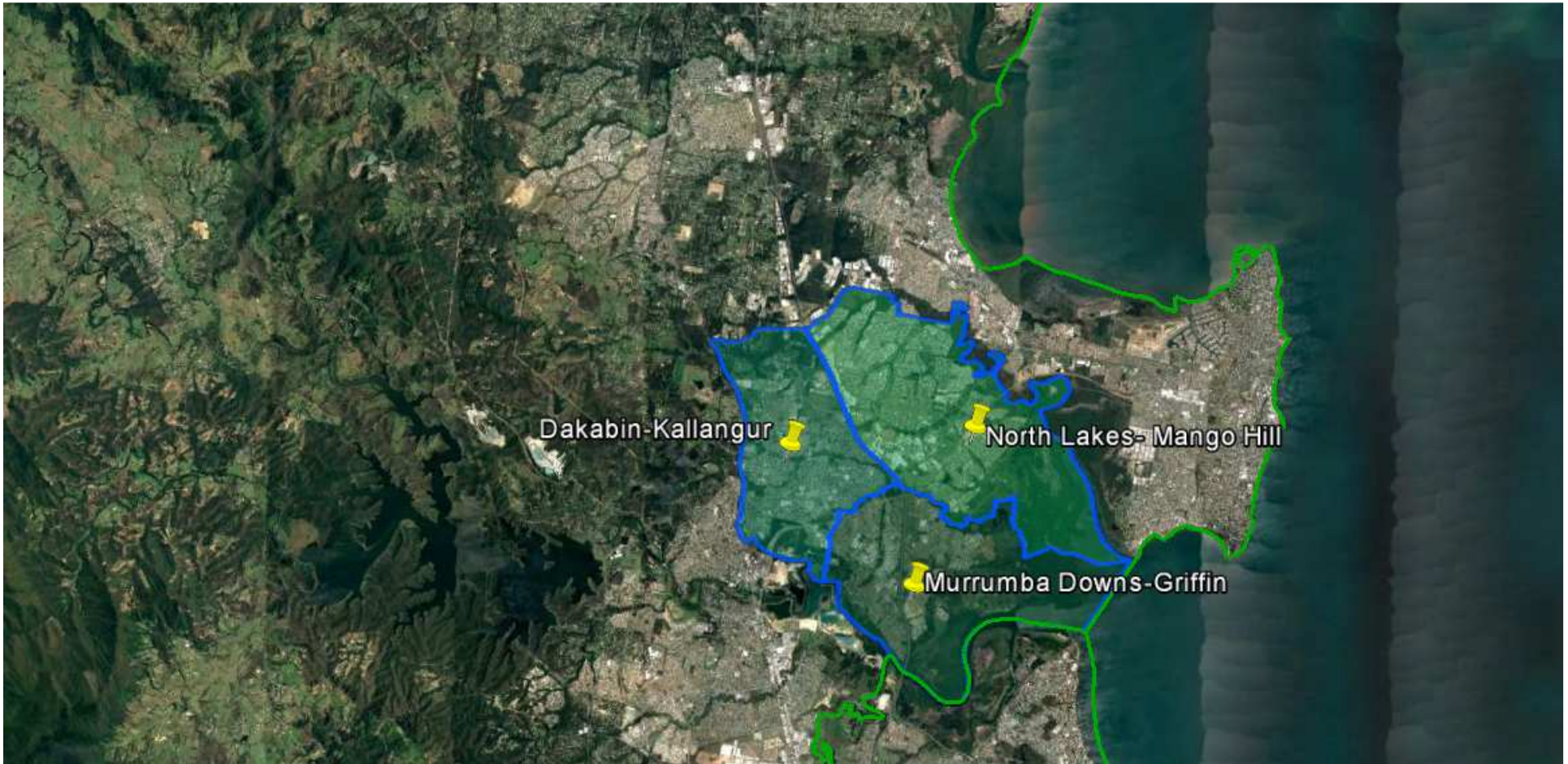
Moreton Bay Regional Council
3 May 2018

Investigated SA2

- **North Lakes-Mango Hill; Murrumba Downs-Griffin; Dakabin-Kallangur**
 - **Narangba**
 - **Caboolture**
 - **Morayfield; Burpengary**
 - **Upper Caboolture; Wamuran**
 - **Cashmere; Lawnton; Petrie**
 - **Caboolture-South**
 - **Morayfield East; Burpengary East**
 - **Elimbah**



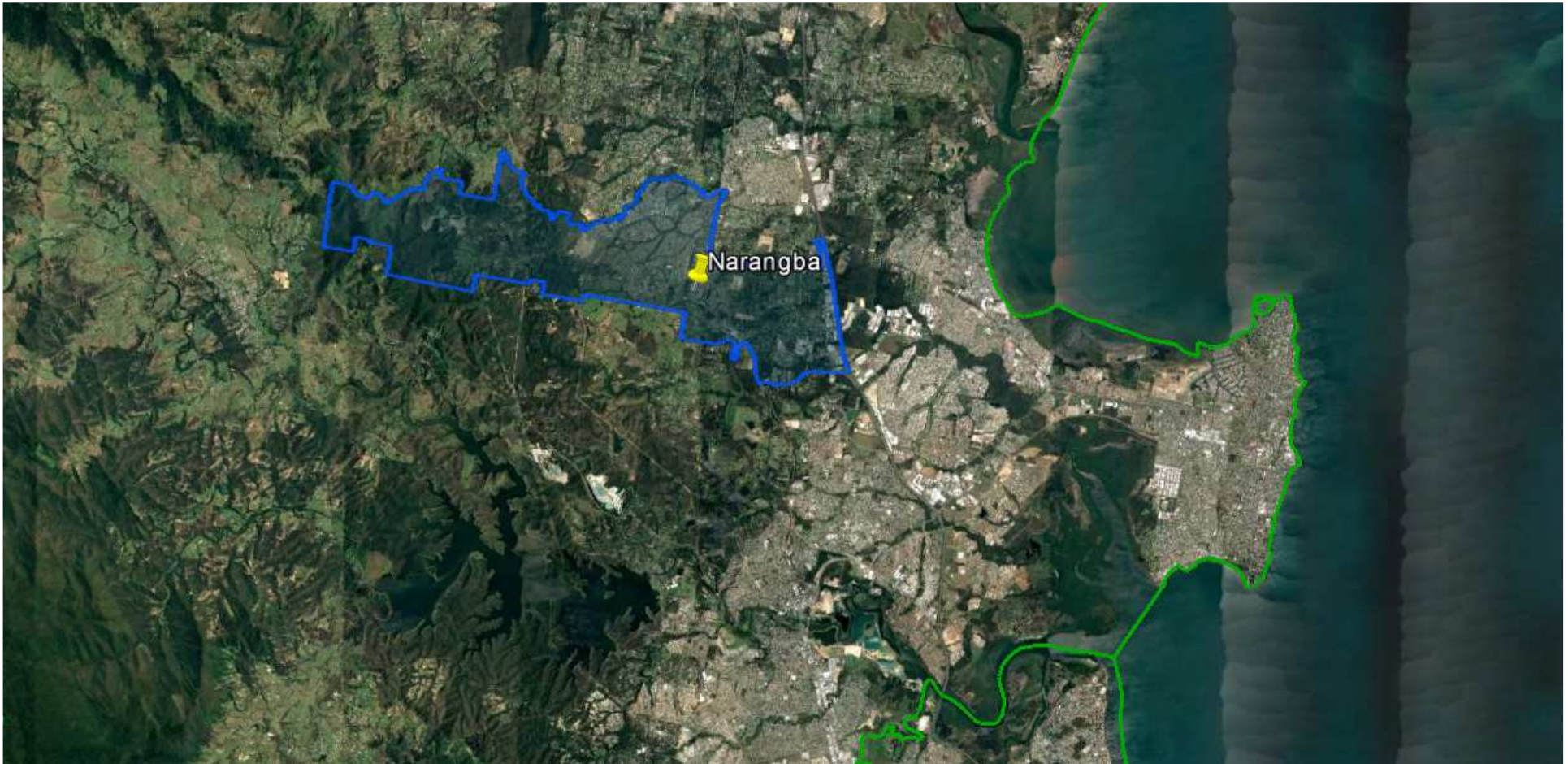
Queensland Schools Planning Reference Committee
SA2 studied in the Moreton Bay Regional Council area



Queensland Schools Planning Reference Committee
 Cross-Sectoral New Schools Demand Mapping 2016-2036
Moreton Bay Regional Council
SA2 Cluster

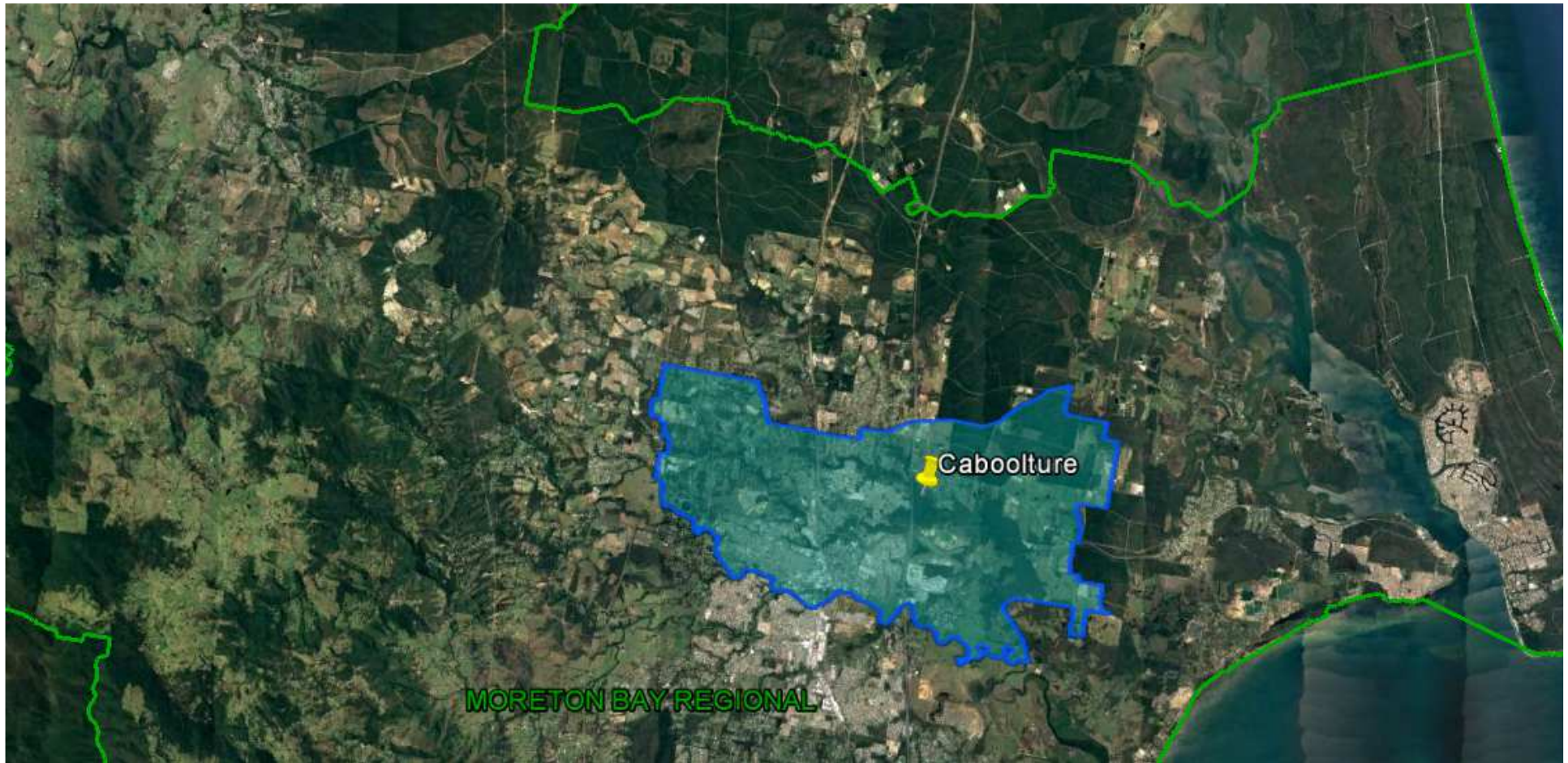
North Lakes-Mango Hill; Murrumba Downs-Griffin; Dakabin-Kallangur

Findings			
Primary		Secondary	
1st Decade to 2026	2nd Decade to 2036	1st Decade to 2026	2nd Decade to 2036
2 new primary schools may be required in the first decade	No new primary schools are likely to be required in the second decade. Expansion of existing sites likely to capture growth	1 new secondary school may be required in the first decade	No new secondary schools are likely to be required in the second decade. Expansion of existing sites likely to capture growth



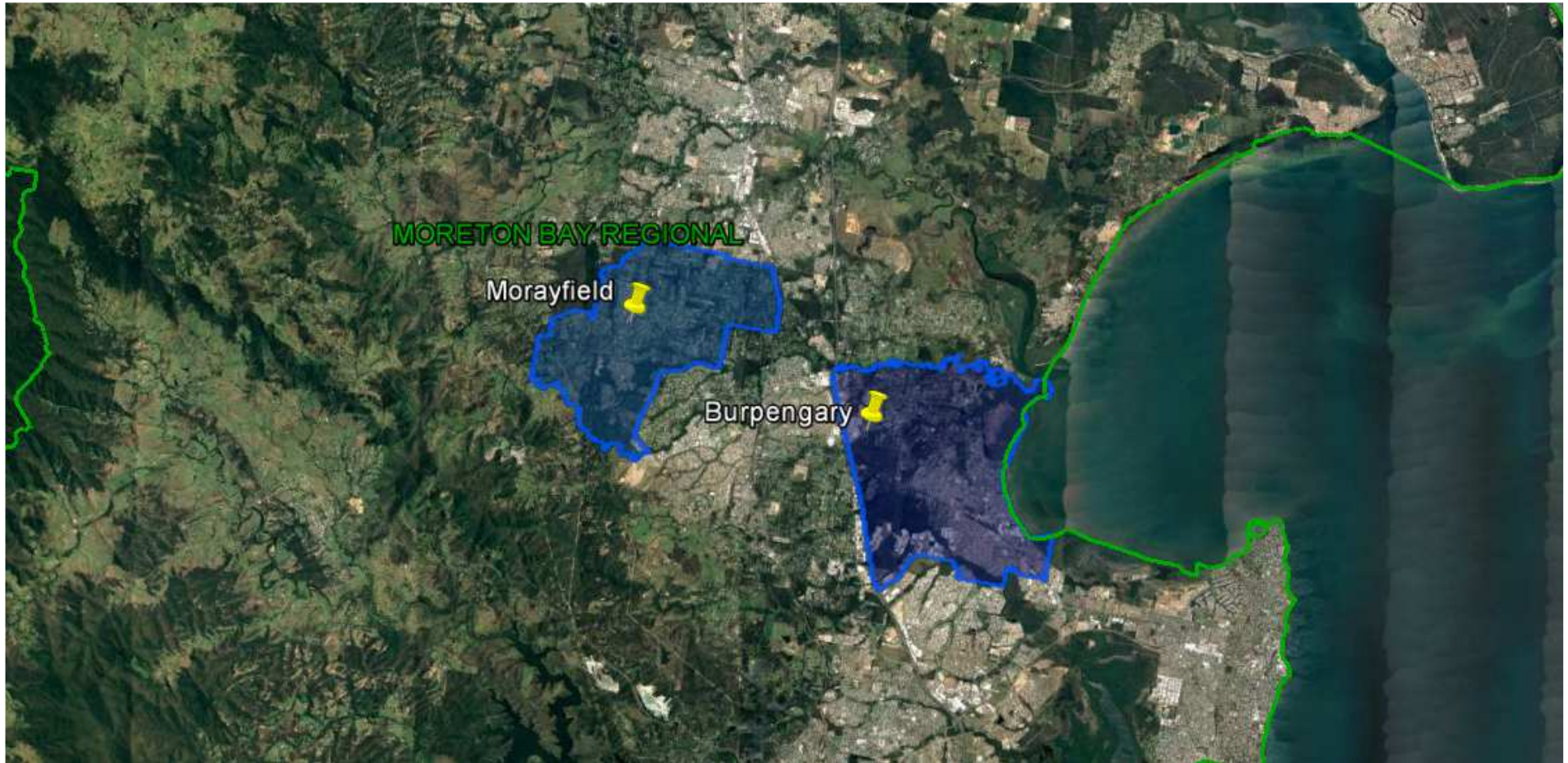
Queensland Schools Planning Reference Committee
 Cross-Sectoral New Schools Demand Mapping 2016-2036
Moreton Bay Regional Council
SA2
Narangba

Findings			
Primary		Secondary	
1st Decade to 2026	2nd Decade to 2036	1st Decade to 2026	2nd Decade to 2036
1-2 new primary schools may be required in the first decade	0-1 new primary school may be required in the second decade	1 new secondary school may be required in the first decade	No new secondary schools are likely to be required in the second decade. Expansion of existing sites likely to capture growth



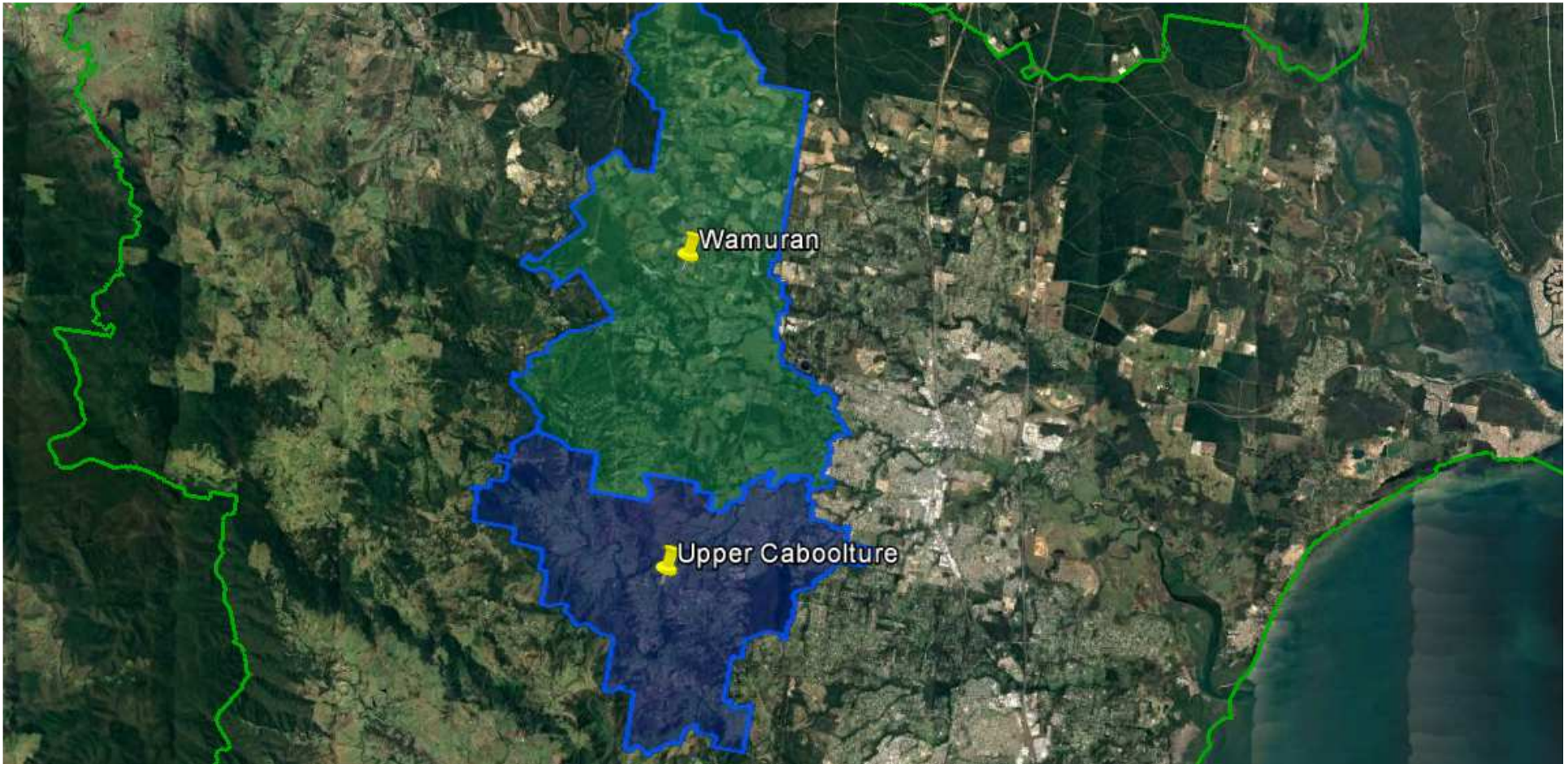
Queensland Schools Planning Reference Committee
 Cross-Sectoral New Schools Demand Mapping 2016-2036
Moreton Bay Regional Council
SA2
Caboolture

Findings			
Primary		Secondary	
1st Decade to 2026	2nd Decade to 2036	1st Decade to 2026	2nd Decade to 2036
0-1 new primary school may be required in the first decade	0-1 new primary school may be required in the second decade	No new secondary schools are likely to be required in the first decade. Expansion of existing sites likely to capture growth	1 new secondary school may be required in the second decade



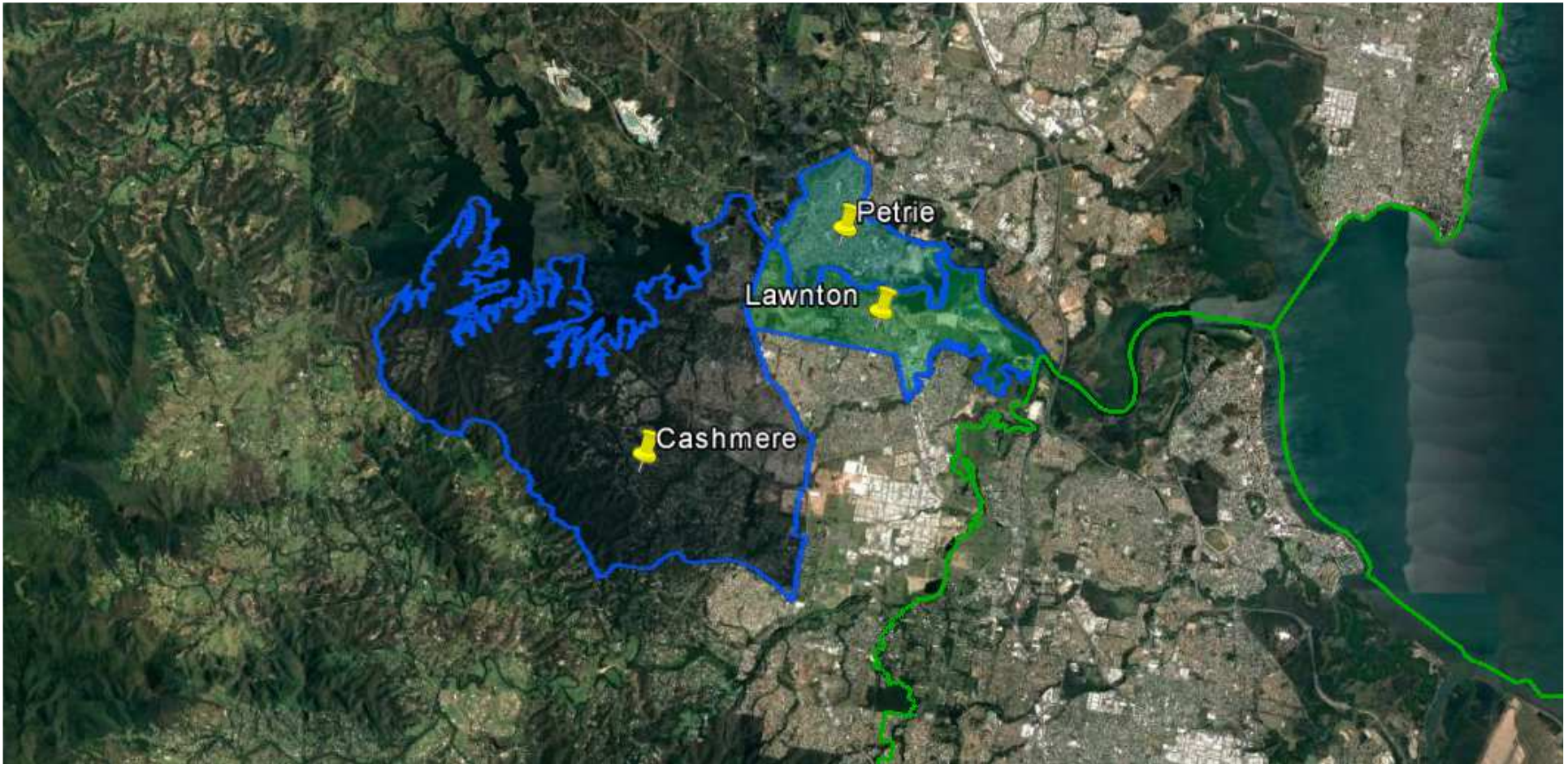
Queensland Schools Planning Reference Committee
 Cross-Sectoral New Schools Demand Mapping 2016-2036
Moreton Bay Regional Council
SA2 Cluster
Morayfield; Burpengary

Findings			
Primary		Secondary	
1st Decade to 2026	2nd Decade to 2036	1st Decade to 2026	2nd Decade to 2036
No new primary schools are likely to be required in the first decade. Expansion of existing sites likely to capture growth	1-2 new primary schools may be required in the second decade	No new secondary schools are likely to be required in the first decade. Expansion of existing sites likely to capture growth	0- 1 new secondary school may be required in the second decade



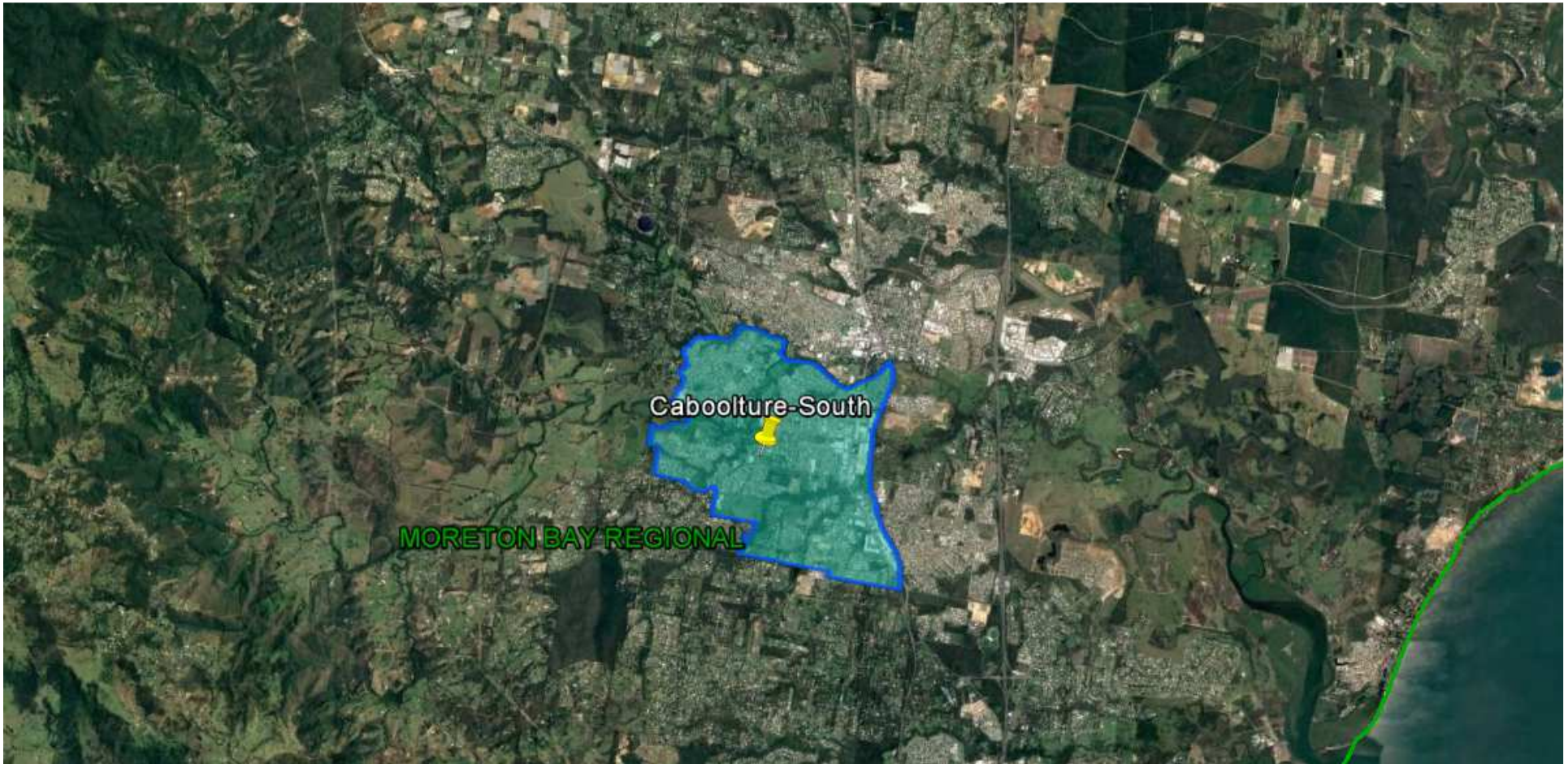
Queensland Schools Planning Reference Committee
 Cross-Sectoral New Schools Demand Mapping 2016-2036
Moreton Bay Regional Council
SA2 Cluster
Upper Caboolture; Wamuran

Findings			
Primary		Secondary	
1st Decade to 2026	2nd Decade to 2036	1st Decade to 2026	2nd Decade to 2036
1 new primary school may be required in the first decade	2-3 new primary schools may be required in the second decade	0-1 new secondary school may be required in the first decade	1-2 new secondary schools may be required in the second decade



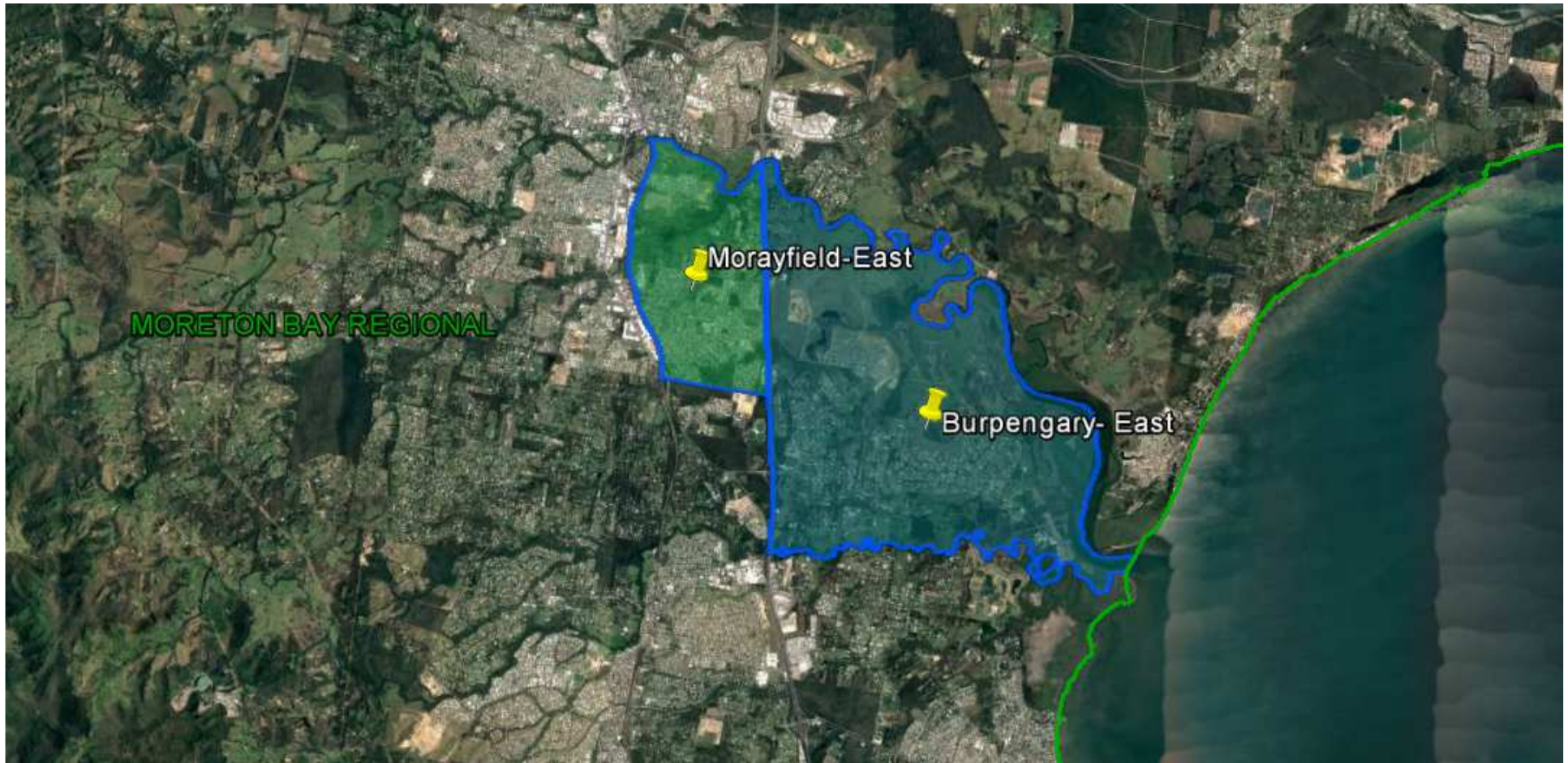
Queensland Schools Planning Reference Committee
 Cross-Sectoral New Schools Demand Mapping 2016-2036
Moreton Bay Regional Council
SA2 Cluster
Cashmere; Lawnton; Petrie

Findings			
Primary		Secondary	
1st Decade to 2026	2nd Decade to 2036	1st Decade to 2026	2nd Decade to 2036
1 new primary school may be required in the first decade	0-1 new primary school may be required in the second decade	0-1 new secondary school may be required in the first decade	No new secondary schools are likely to be required in the second decade. Expansion of existing sites likely to capture growth



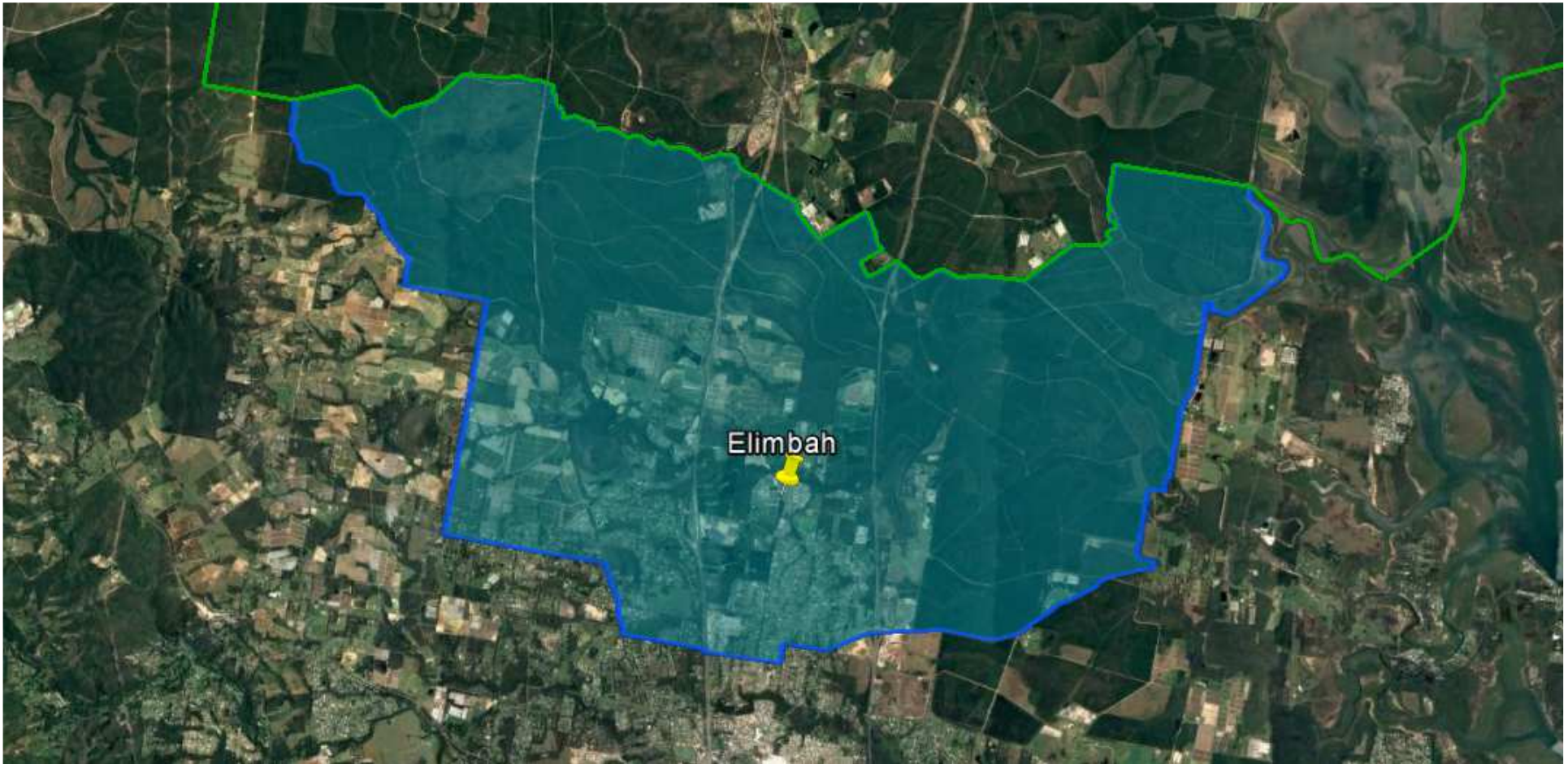
Queensland Schools Planning Reference Committee
 Cross-Sectoral New Schools Demand Mapping 2016-2036
Moreton Bay Regional Council
SA2
Caboolture-South

Findings			
Primary		Secondary	
1st Decade to 2026	2nd Decade to 2036	1st Decade to 2026	2nd Decade to 2036
No new primary schools are likely to be required in the first decade. Expansion of existing sites likely to capture growth	No new primary schools are likely to be required in the second decade. Expansion of existing sites likely to capture growth	No new secondary schools are likely to be required in the first decade. Expansion of existing sites likely to capture growth	No new secondary schools are likely to be required in the second decade. Expansion of existing sites likely to capture growth



Queensland Schools Planning Reference Committee
 Cross-Sectoral New Schools Demand Mapping 2016-2036
Moreton Bay Regional Council
SA2 Cluster
Morayfield East; Burpengary East

Findings			
Primary		Secondary	
1st Decade to 2026	2nd Decade to 2036	1st Decade to 2026	2nd Decade to 2036
1 new primary school may be required in the first decade	0-1 new primary school may be required in the second decade	No new secondary schools are likely to be required in the first decade. Expansion of existing sites likely to capture growth	No new secondary schools are likely to be required in the second decade. Expansion of existing sites likely to capture growth



Queensland Schools Planning Reference Committee
 Cross-Sectoral New Schools Demand Mapping 2016-2036
Moreton Bay Regional Council
SA2
Elimbah

Findings			
Primary		Secondary	
1st Decade to 2026	2nd Decade to 2036	1st Decade to 2026	2nd Decade to 2036
No new primary schools are likely to be required in the first decade. Expansion of existing sites likely to capture growth	No new primary schools are likely to be required in the second decade. Expansion of existing sites likely to capture growth	No new secondary schools are likely to be required in the first decade. Expansion of existing sites likely to capture growth	No new secondary schools are likely to be required in the second decade. Expansion of existing sites likely to capture growth