

Queensland Schools Planning Reference Committee – Cross-Sectoral New Schools Demand Mapping 2021 to 2041 Moreton Bay Regional Council – 11 October 2019

New school recommendations reflect the potential need of new state and non-state primary and secondary schools based on an assessment of the 2018 edition Queensland Government population projections, local advice on population growth and available capacity within the existing school network. The growth SA2s, shown below, were selected for detailed assessment during the Demand Mapping Meeting. Areas for assessment are comprised of one or more Statistical Areas Level 2 (SA2s) which are established by the Australian Bureau of Statistics and are the smallest statistical area commonly used for a range of statistical information including population projections. Population projections used to inform this assessment are prepared by the Queensland Government Statistician's Office and can be accessed [here](#).

SA2 or Cluster	New government and non-government schools that may be required:				Estimated and Projected Primary (ages 5-11) and Secondary (ages 12-17) School-Age Population					
	2021 to 2031		2031 to 2041		Population 2016		Growth 2021 to 2031		Growth 2031 to 2041	
	Primary	Secondary	Primary	Secondary	Primary	Secondary	Primary	Secondary	Primary	Secondary
Upper Caboolture and Wamuran SA2s (includes Caboolture West Master Planned Area)	1	0-1	3	2-3	708	674	362	310	1,864	1,851
Caboolture and Caboolture – South SA2s	0	1	1	0	5,411	3,654	925	964	935	780
Narangba SA2	2	1	0-1	0-1	2,694	2,107	882	688	815	787
Dakabin – Kallangur and Murrumba Downs – Griffin SA2s	0-1	0-1	0	0	4,539	2,959	984	1,335	452	313
Morayfield SA2	1-2	0-1	1-2	0-1	422	494	675	601	677	614
Burpengary – East, Deception Bay and Morayfield – East SA2s	1	0	0	0	3,631	3,011	720	689	525	436
Cashmere and Strathpine – Brendale SA2s	1	0-1	0	0	3,481	2,674	738	714	347	288
North Lakes – Mango Hill SA2	0-1	0	0	0	4,116	2,822	868	778	37	69
Burpengary SA2	0	0	0	0	1,476	1,269	242	254	433	399
Lawnton and Petrie SA2s	0-1	0	0	0	1,593	1,135	466	376	193	179
Scarborough – Newport – Moreton Island SA2	0-1	0	0	0	959	877	148	157	34	41
TOTAL	6-11	2-6	5-7	2-5						

Note: Recommendations do not include new schools opening in 2020.



Map of Moreton Bay Regional Council showing the Statistical Areas Level 2 Assessed

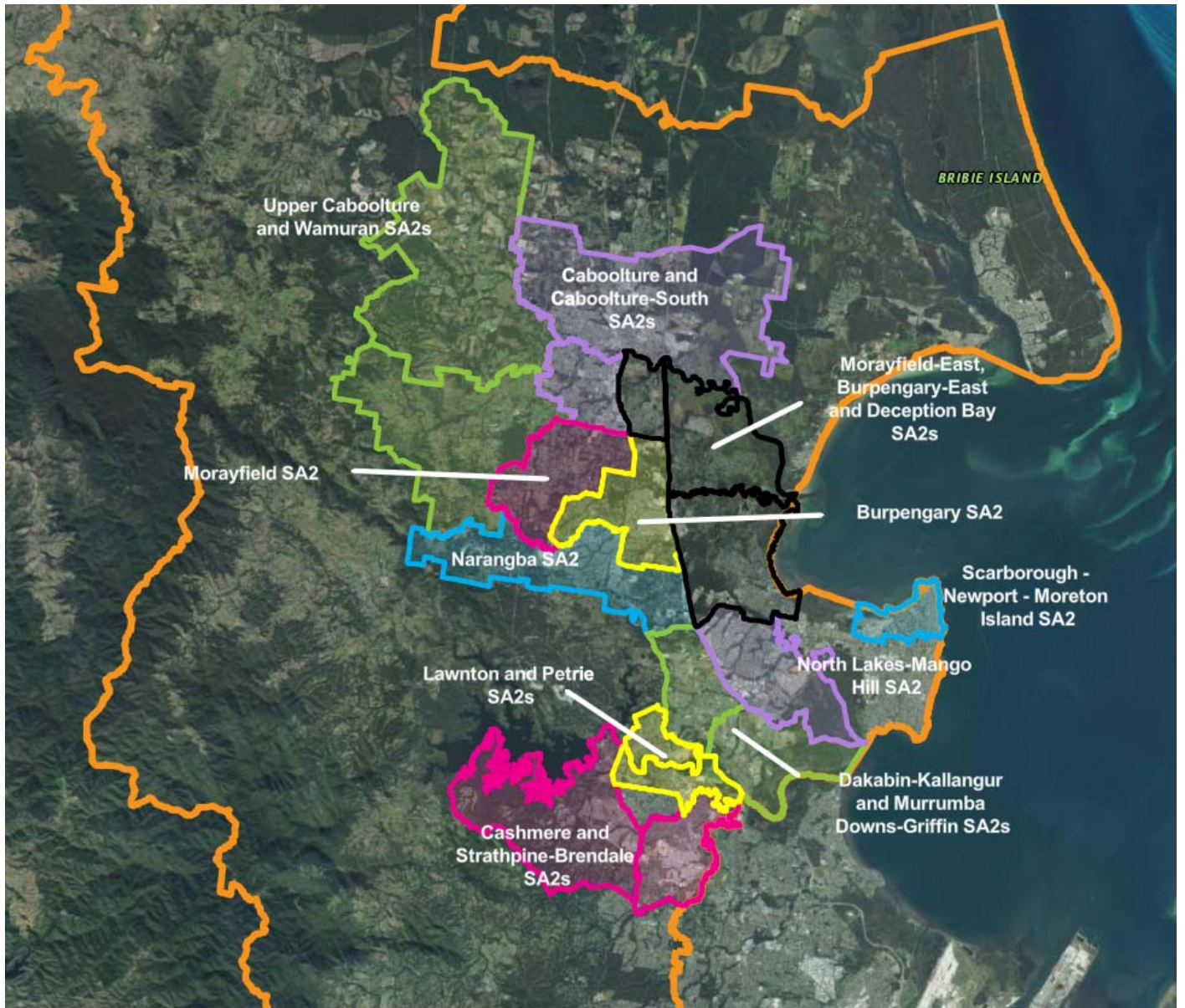


Image from Queensland Globe.

