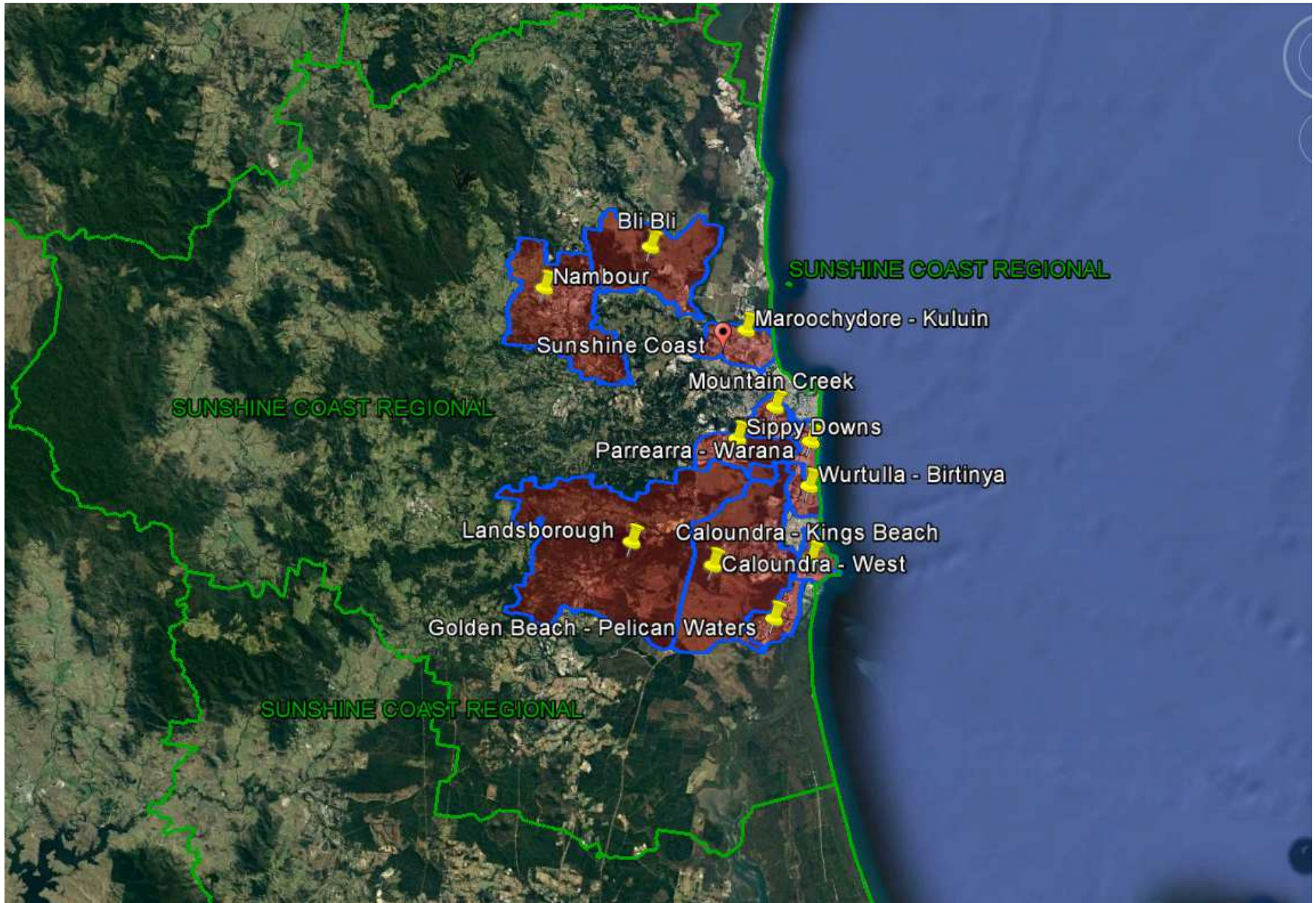


Queensland Schools Planning Reference Committee
Cross-Sectoral New Schools Demand Mapping
2016-2036

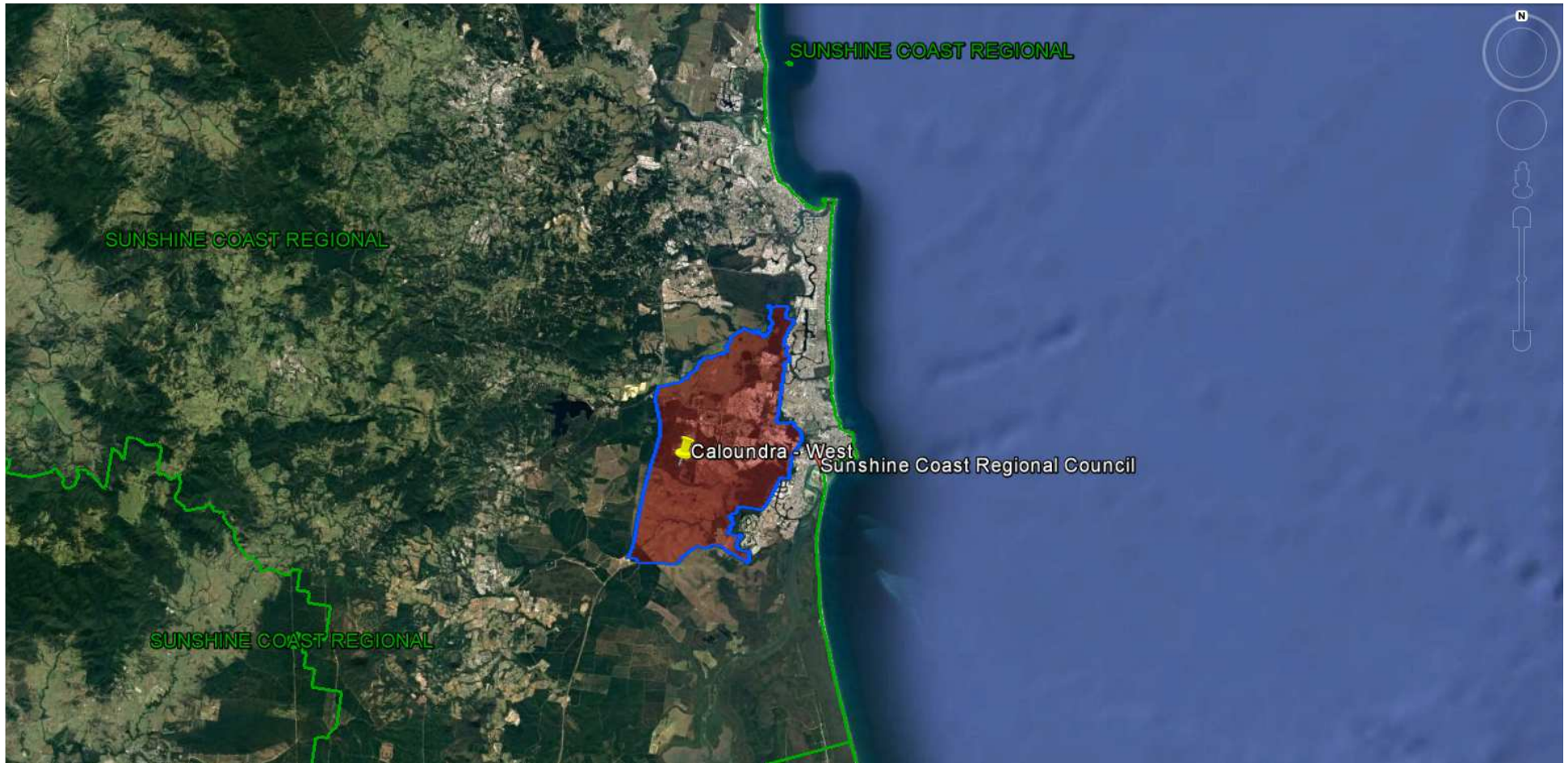
Sunshine Coast Council

Investigated SA2

- Caloundra - West
 - Landsborough
- Sippy Downs; Mountain Creek
 - Maroochydore - Kuluin
- Caloundra - Kings Beach; Golden Beach - Pelican Waters
 - Wurtulla – Birtinya; Parrearra - Warana
 - Bli Bli; Nambour

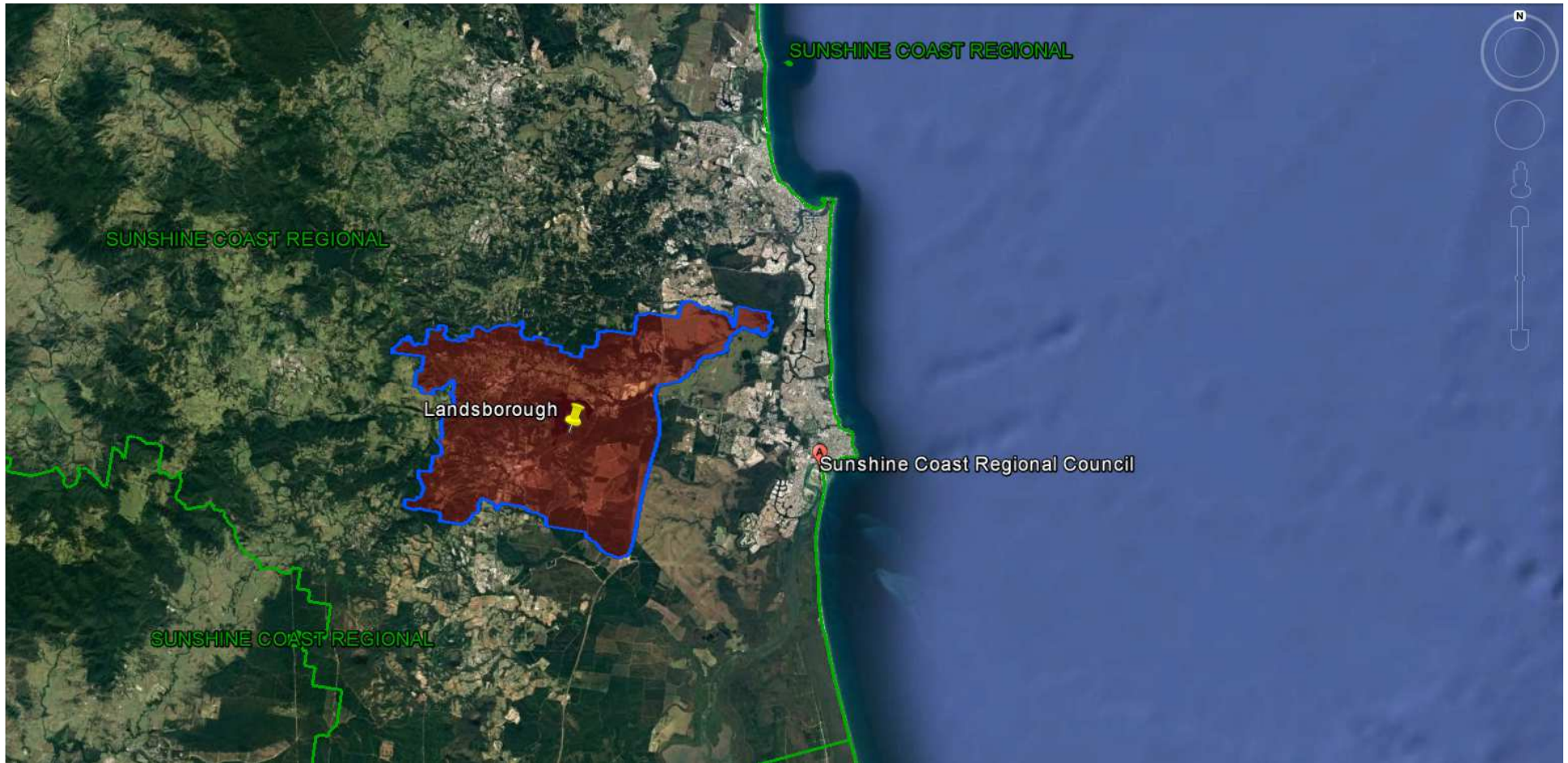


Queensland Schools Planning Reference Committee
SA2 studied in the Sunshine Coast Council area



Queensland Schools Planning Reference Committee
 Cross-Sectoral New Schools Demand Mapping 2016-2036
Sunshine Coast Council
SA2
Caloundra West

Findings			
Primary		Secondary	
1st Decade to 2026	2nd Decade to 2036	1st Decade to 2026	2nd Decade to 2036
2-3 new primary schools may be required in the first decade	3-4 new primary schools may be required in the second decade	2-3 new secondary schools may be required in the first decade	1-2 new secondary schools may be required in the second decade



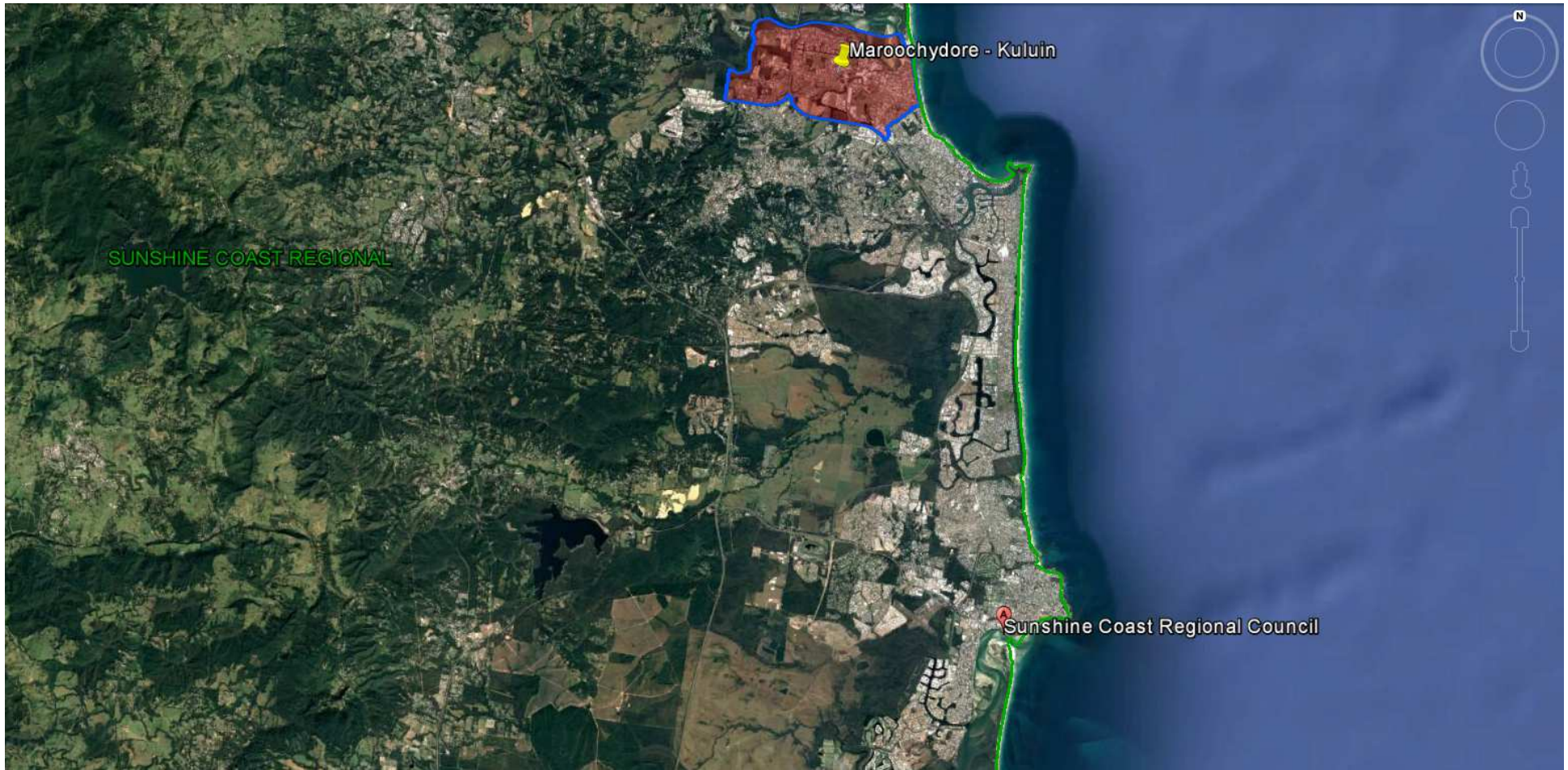
Queensland Schools Planning Reference Committee
 Cross-Sectoral New Schools Demand Mapping 2016-2036
Sunshine Coast Council
SA2
Landsborough

Findings			
Primary		Secondary	
1st Decade to 2026	2nd Decade to 2036	1st Decade to 2026	2nd Decade to 2036
2-4 new primary schools may be required in the first decade	3-4 new primary schools may be required in the second decade	2-3 new secondary schools may be required in the first decade	2-3 new secondary schools may be required in the second decade



Queensland Schools Planning Reference Committee
 Cross-Sectoral New Schools Demand Mapping 2016-2036
Sunshine Coast Council
SA2 Cluster
Sippy Downs; Mountain Creek

Findings			
Primary		Secondary	
1st Decade to 2026	2nd Decade to 2036	1st Decade to 2026	2nd Decade to 2036
1-2 new primary schools may be required in the first decade	0-1 new primary school may be required in the second decade	0-1 new secondary school may be required in the first decade	0 - 1 new secondary school may be required in the second decade



Queensland Schools Planning Reference Committee
 Cross-Sectoral New Schools Demand Mapping 2016-2036

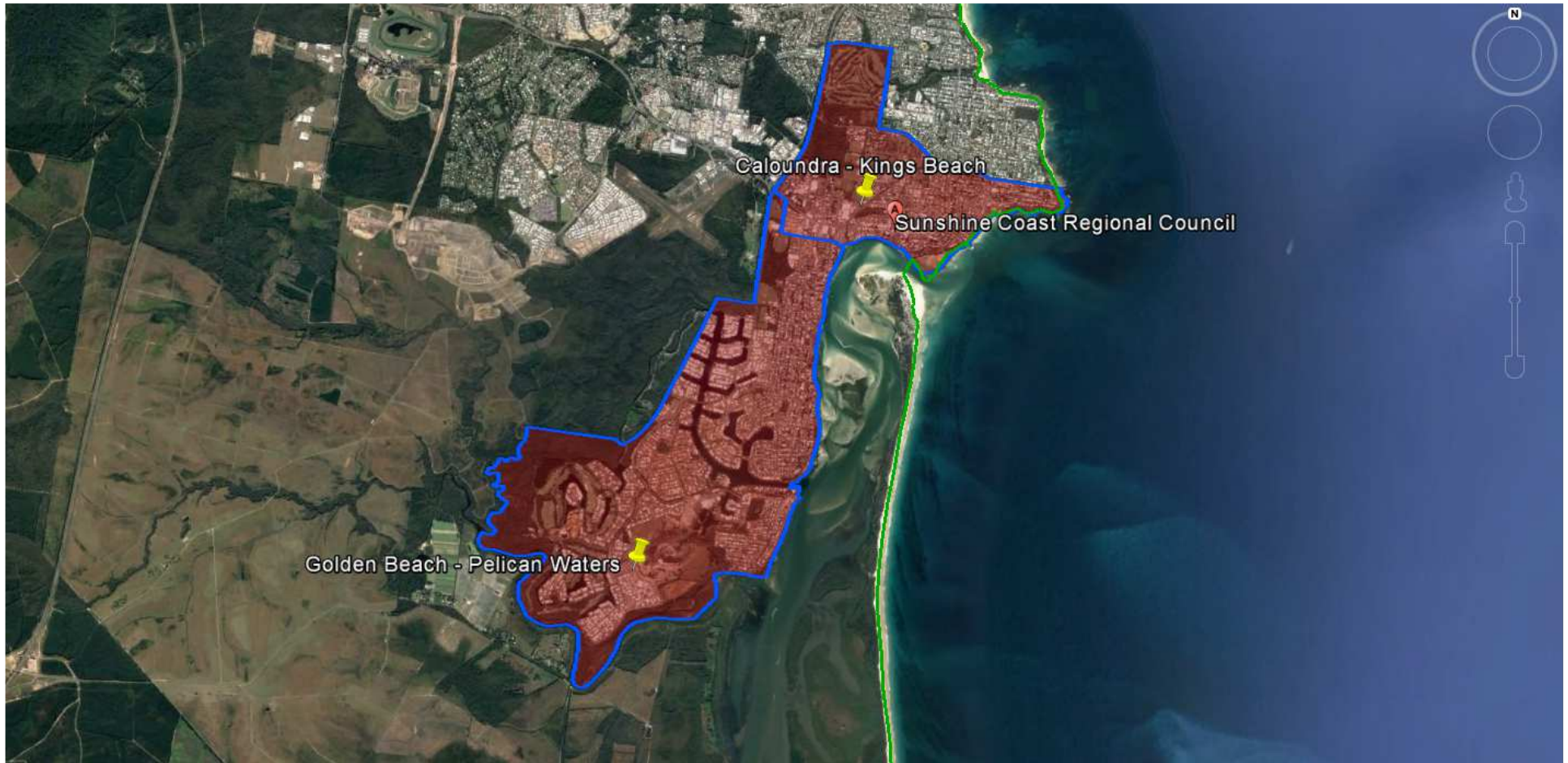
Sunshine Coast Council

SA2

Maroochydore- Kuluin

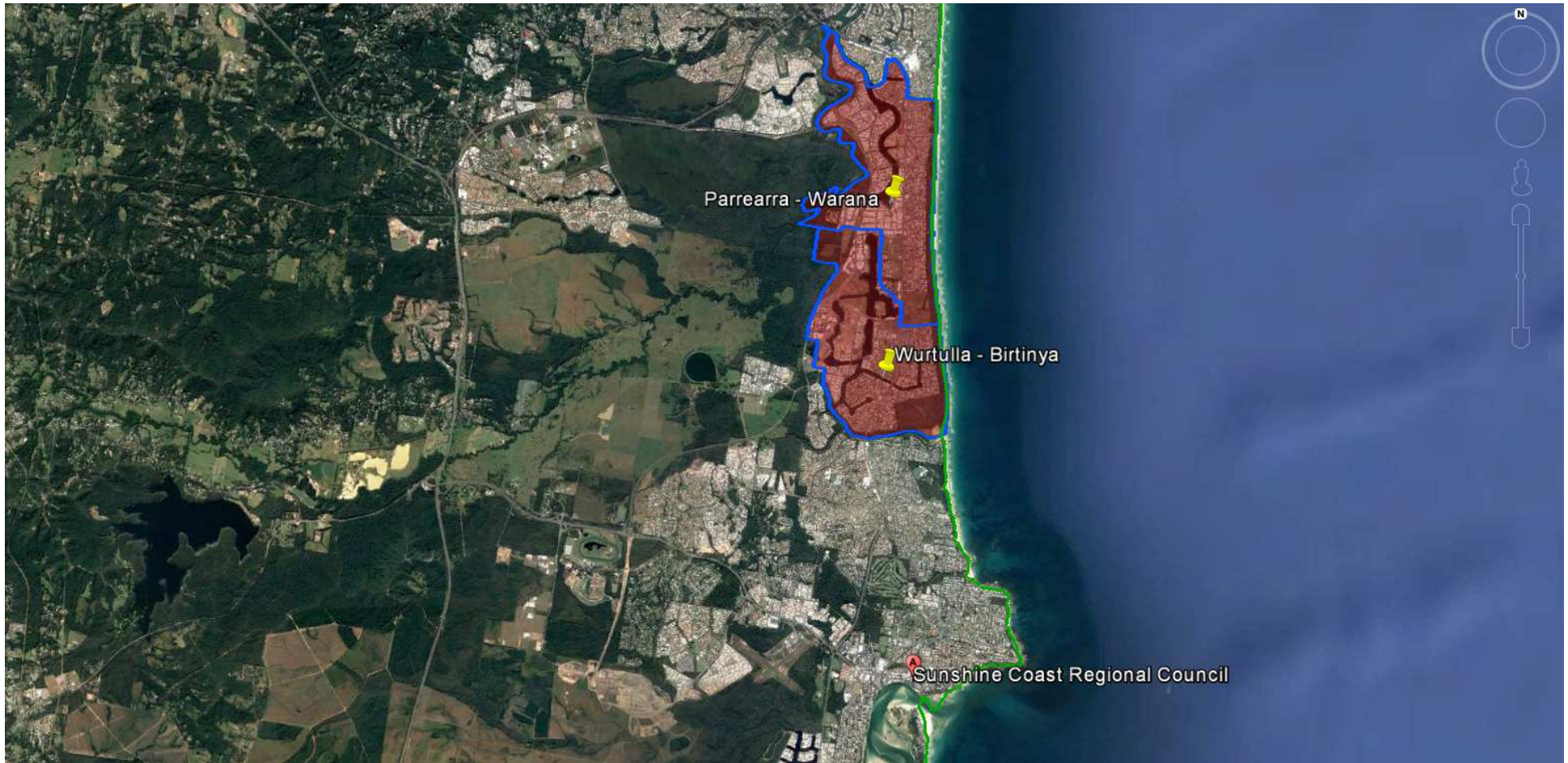
Findings

Primary		Secondary	
1st Decade to 2026	2nd Decade to 2036	1st Decade to 2026	2nd Decade to 2036
No new primary schools are likely to be required in the first decade. Expansion of existing sites likely to capture growth	No new primary schools are likely to be required in the second decade. Expansion of existing sites likely to capture growth	No new secondary schools are likely to be required in the first decade. Expansion of existing sites likely to capture growth	No new secondary schools are likely to be required in the second decade. Expansion of existing sites likely to capture growth



Queensland Schools Planning Reference Committee
 Cross-Sectoral New Schools Demand Mapping 2016-2036
Sunshine Coast Council
SA2 Cluster
Caloundra-Kings Beach; Golden Beach-Pelican Waters

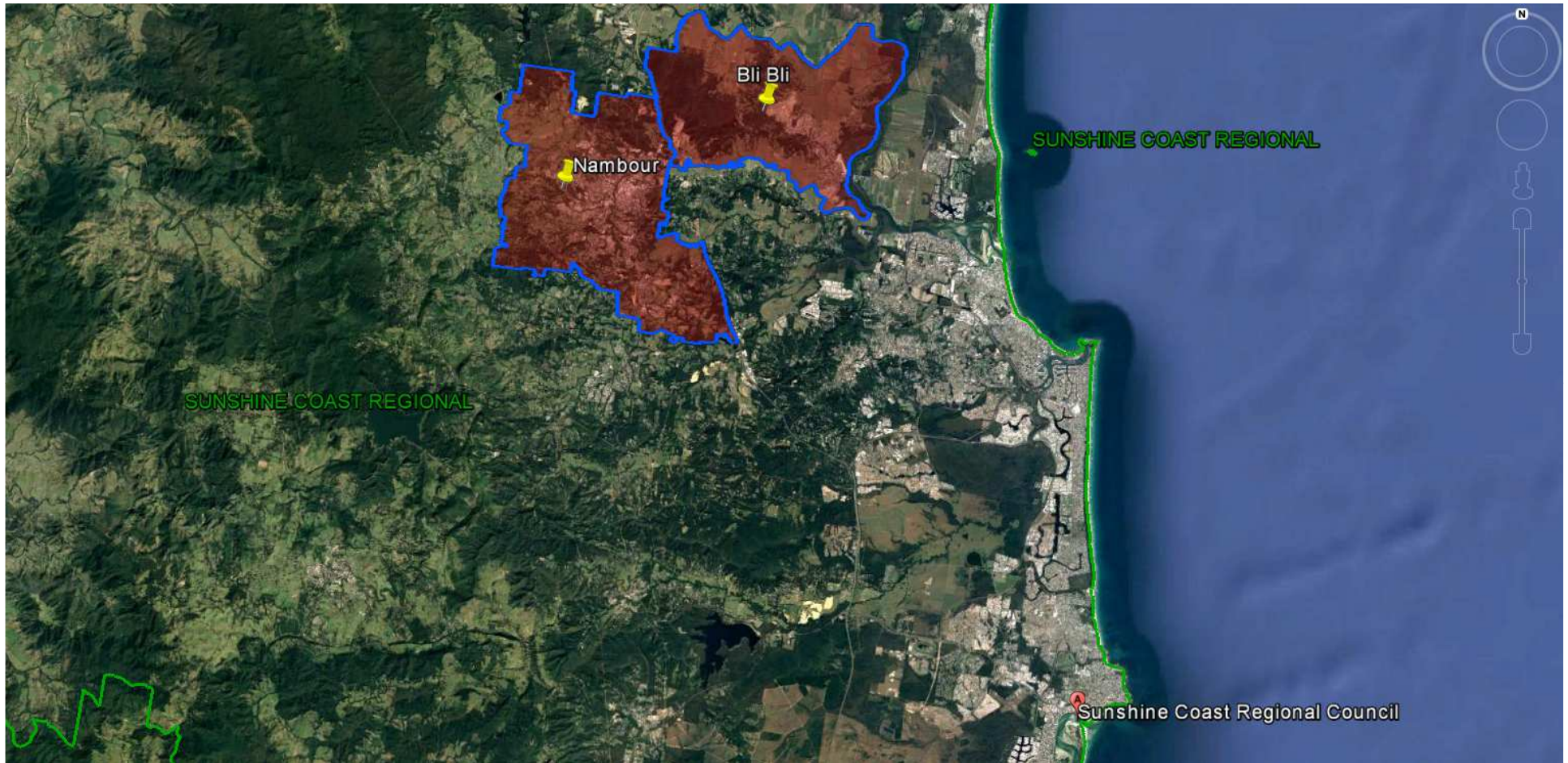
Findings			
Primary		Secondary	
1st Decade to 2026	2nd Decade to 2036	1st Decade to 2026	2nd Decade to 2036
No new primary schools are likely to be required in the first decade. Expansion of existing sites likely to capture growth	No new primary schools are likely to be required in the second decade. Expansion of existing sites likely to capture growth	No new secondary schools are likely to be required in the first decade. Expansion of existing sites likely to capture growth	No new secondary schools are likely to be required in the second decade. Expansion of existing sites likely to capture growth



Queensland Schools Planning Reference Committee
 Cross-Sectoral New Schools Demand Mapping 2016-2036
Sunshine Coast Council
SA2 Cluster
Parrearra-Warana; Wurtulla-Birtinya

Findings

Primary		Secondary	
1st Decade to 2026	2nd Decade to 2036	1st Decade to 2026	2nd Decade to 2036
No new primary schools are likely to be required in the first decade. Expansion of existing sites likely to capture growth	No new primary schools are likely to be required in the second decade. Expansion of existing sites likely to capture growth	No new secondary schools are likely to be required in the first decade. Expansion of existing sites likely to capture growth	No new secondary schools are likely to be required in the second decade. Expansion of existing sites likely to capture growth



Queensland Schools Planning Reference Committee
 Cross-Sectoral New Schools Demand Mapping 2016-2036
Sunshine Coast Council
SA2 Cluster
Nambour; Bli Bli

Findings

Primary		Secondary	
1st Decade to 2026	2nd Decade to 2036	1st Decade to 2026	2nd Decade to 2036
0-1 new primary school may be required in the first decade	No new primary schools are likely to be required in the second decade. Expansion of existing sites likely to capture growth	0-1 new secondary school may be required in the first decade	No new secondary schools are likely to be required in the second decade