

Queensland Schools Planning Reference Committee – Cross-Sectoral New Schools Demand Mapping 2021 to 2041 Sunshine Coast Council – 5 August 2019

New school recommendations reflect the potential need of new state and non-state primary and secondary schools based on an assessment of the 2018 edition Queensland Government population projections, local advice on population growth and available capacity within the existing school network. The growth SA2s, shown below, were selected for detailed assessment during the Demand Mapping Meeting. Areas for assessment are comprised of one or more Statistical Areas Level 2 (SA2s) which are established by the Australian Bureau of Statistics and are the smallest statistical area commonly used for a range of statistical information including population projections. Population projections used to inform this assessment are prepared by the Queensland Government Statistician's Office and can be accessed [here](#).

SA2 or Cluster	New government and non-government schools that may be required:				Estimated and Projected Primary (ages 5-11) and Secondary (ages 12-17) School-Age Population					
	2021 to 2031		2031 to 2041		Population 2016		Growth 2021 to 2031		Growth 2031 to 2041	
	Primary	Secondary	Primary	Secondary	Primary	Secondary	Primary	Secondary	Primary	Secondary
Caloundra-West SA2 (includes the Caloundra South Priority Development Area)	2-3	2-3	2-3	1-3	2,314	1,928	2,220	2,006	1,979	1,805
Landsborough SA2 – Palmview Master Planned Area	2-3	2	0-1	0-1	1,027	934	1,386	1,106	1,422	1,291
Landsborough SA2 – Beerwah East Major Development Area	0-2	0-1	1-3	1-3						
Buddina-Minyama, Parrearra-Warana and Wurtulla-Birtinya SA2s	0	0	1	0-1	2,184	1,805	459	373	843	897
Caloundra-Kings Beach, Golden Beach-Pelican Waters and Moffat Beach-Battery Hill SA2s	0	0	0-1	0	1,919	1,757	284	278	306	344
Nambour SA2	0	0	0	0	1,977	1,553	321	240	182	202
Maroochydore-Kuluin and Mooloolaba-Alexandra Headland SA2s	0	0	0	0	1,829	1,470	278	218	173	220
Eumundi-Yandina SA2	0	0	0	0	1,085	844	164	122	231	232
TOTAL	4-8	4-6	4-9	2-8						

Note: Recommendations do not include new schools opening in 2020.



Map of Sunshine Coast Council showing the Statistical Areas Level 2 Assessed

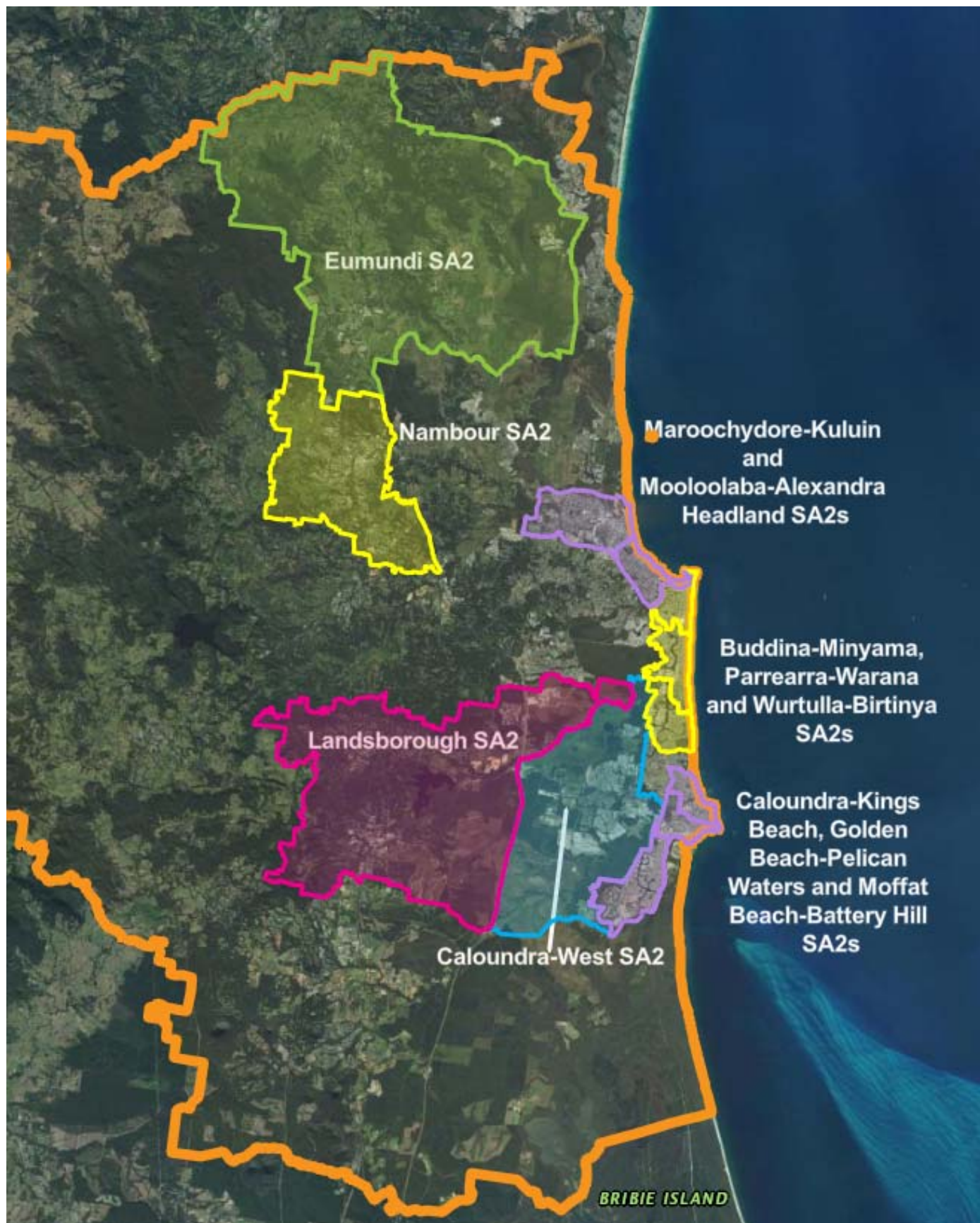


Image from Queensland Globe.

