

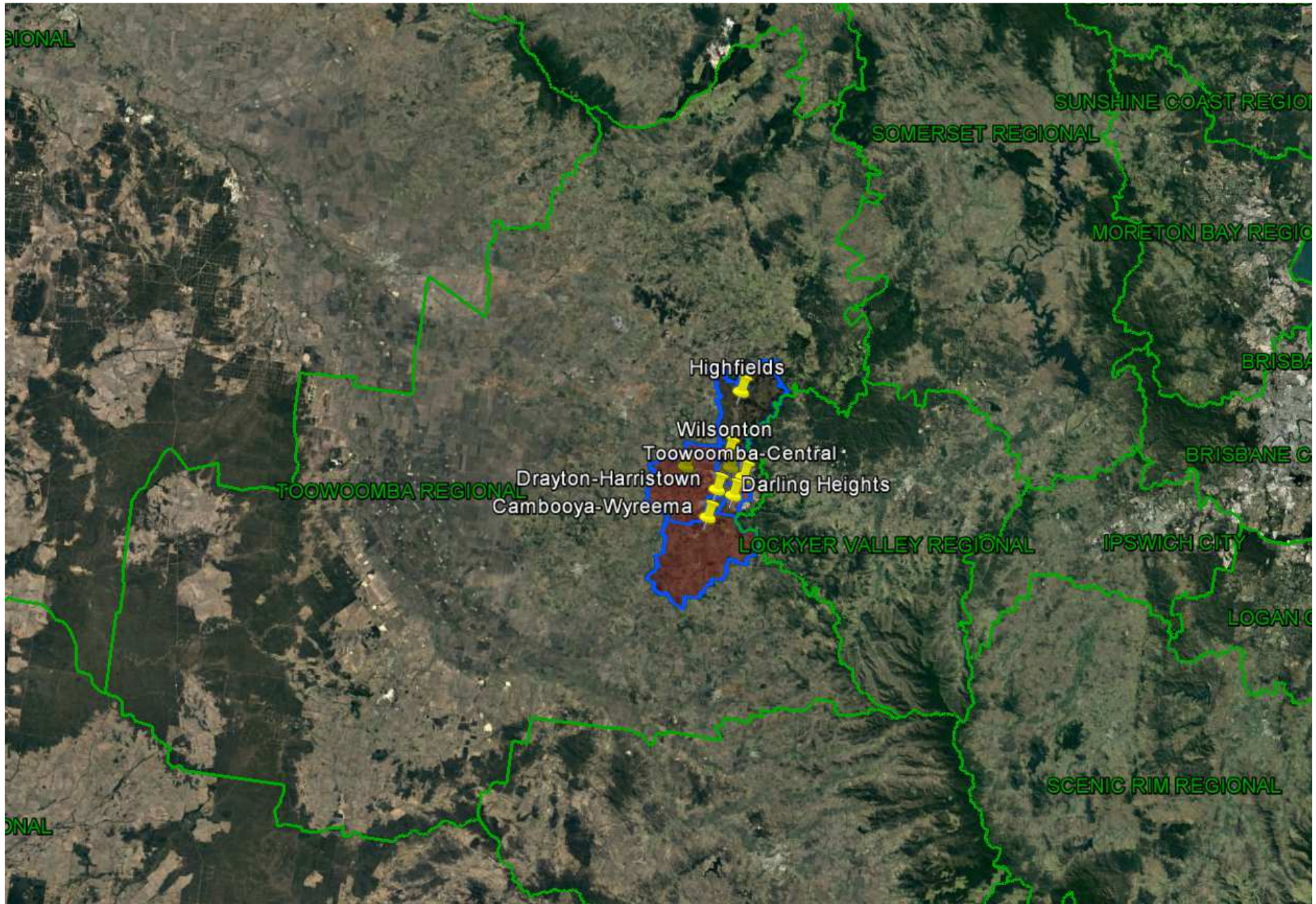
Queensland Schools Planning Reference Committee
Cross-Sectoral New Schools Demand Mapping
2016-2036

Toowoomba Regional Council

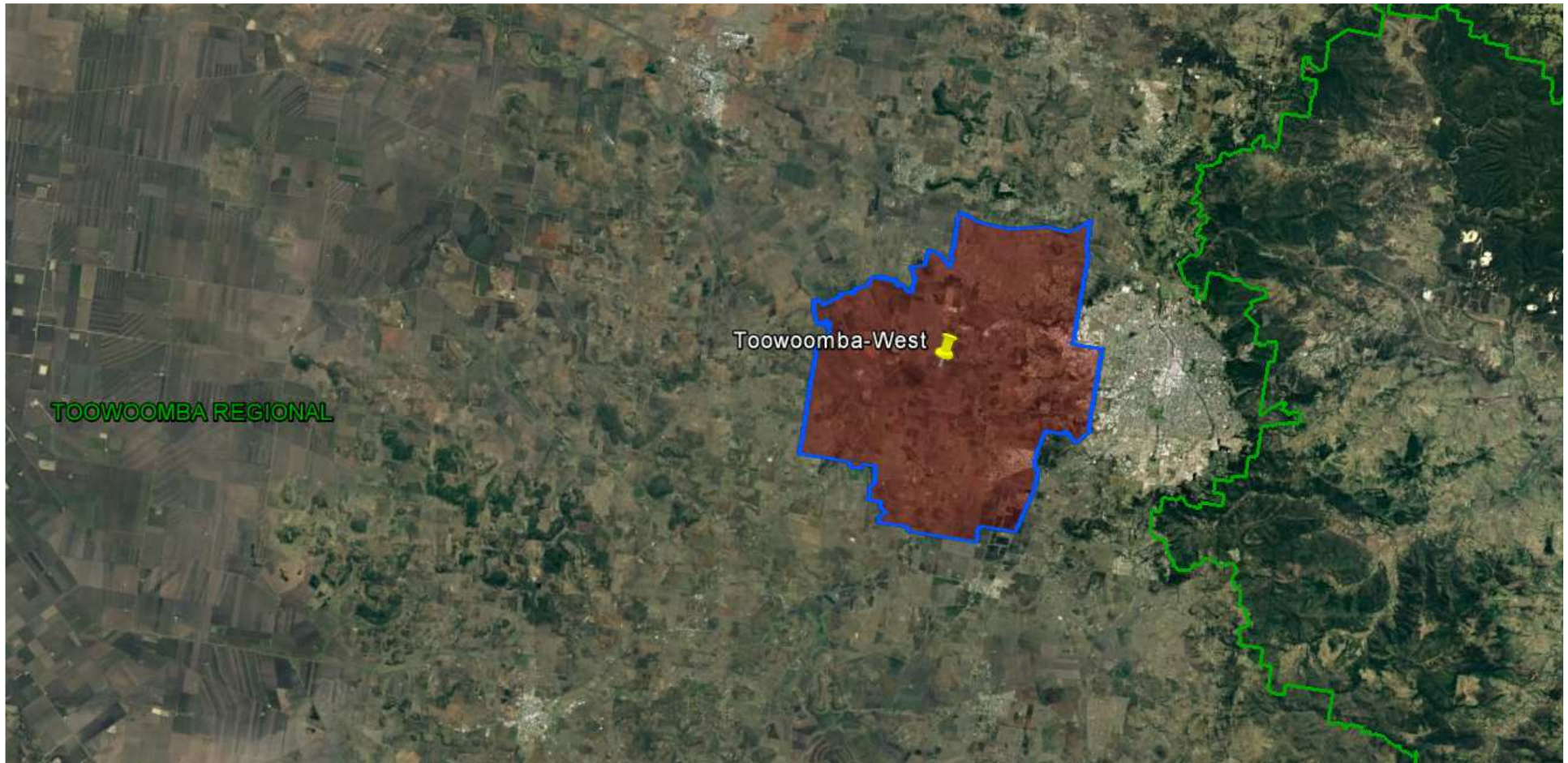
10 May 18

Investigated SA2

- Toowoomba- West
 - Highfields
- Cambooya-Wyreema; Darling Heights; Drayton-Harristown
 - Toowoomba-Central
 - Newtown (Qld); Wilsonton



Queensland Schools Planning Reference Committee
SA2 studied in the Toowoomba Regional Council area



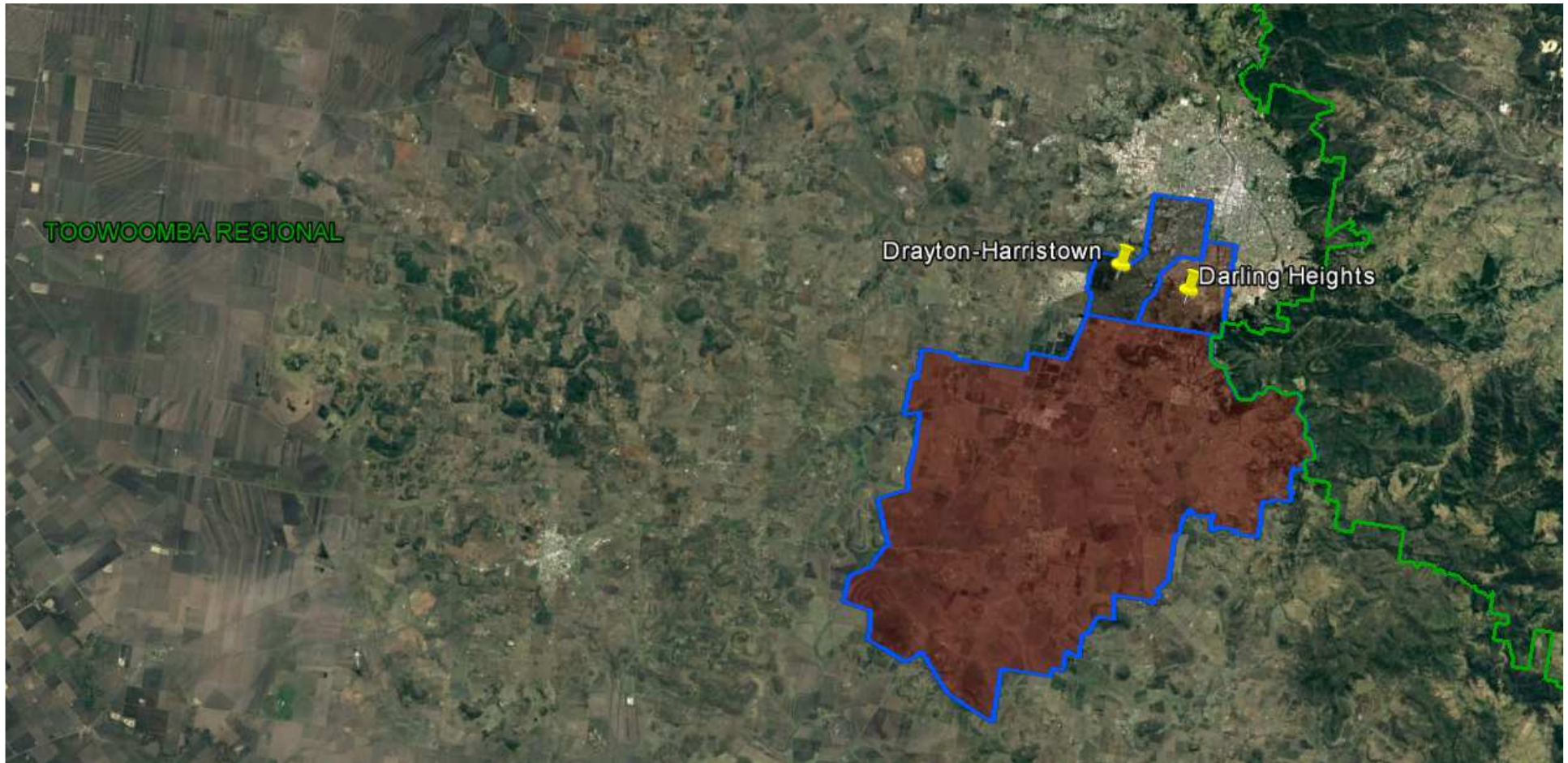
Queensland Schools Planning Reference Committee
 Cross-Sectoral New Schools Demand Mapping 2016-2036
Toowoomba Regional Council
SA2
Toowoomba-West

| Findings | | | |
|--|---|--|---|
| Primary | | Secondary | |
| 1st Decade to 2026 | 2nd Decade to 2036 | 1st Decade to 2026 | 2nd Decade to 2036 |
| No new primary schools are likely to be required in the first decade. Expansion of existing sites likely to capture growth | 0-1 new primary school may be required in the second decade | No new secondary schools are likely to be required in the first decade. Expansion of existing sites likely to capture growth | 0 - 1 new secondary school may be required in the second decade |



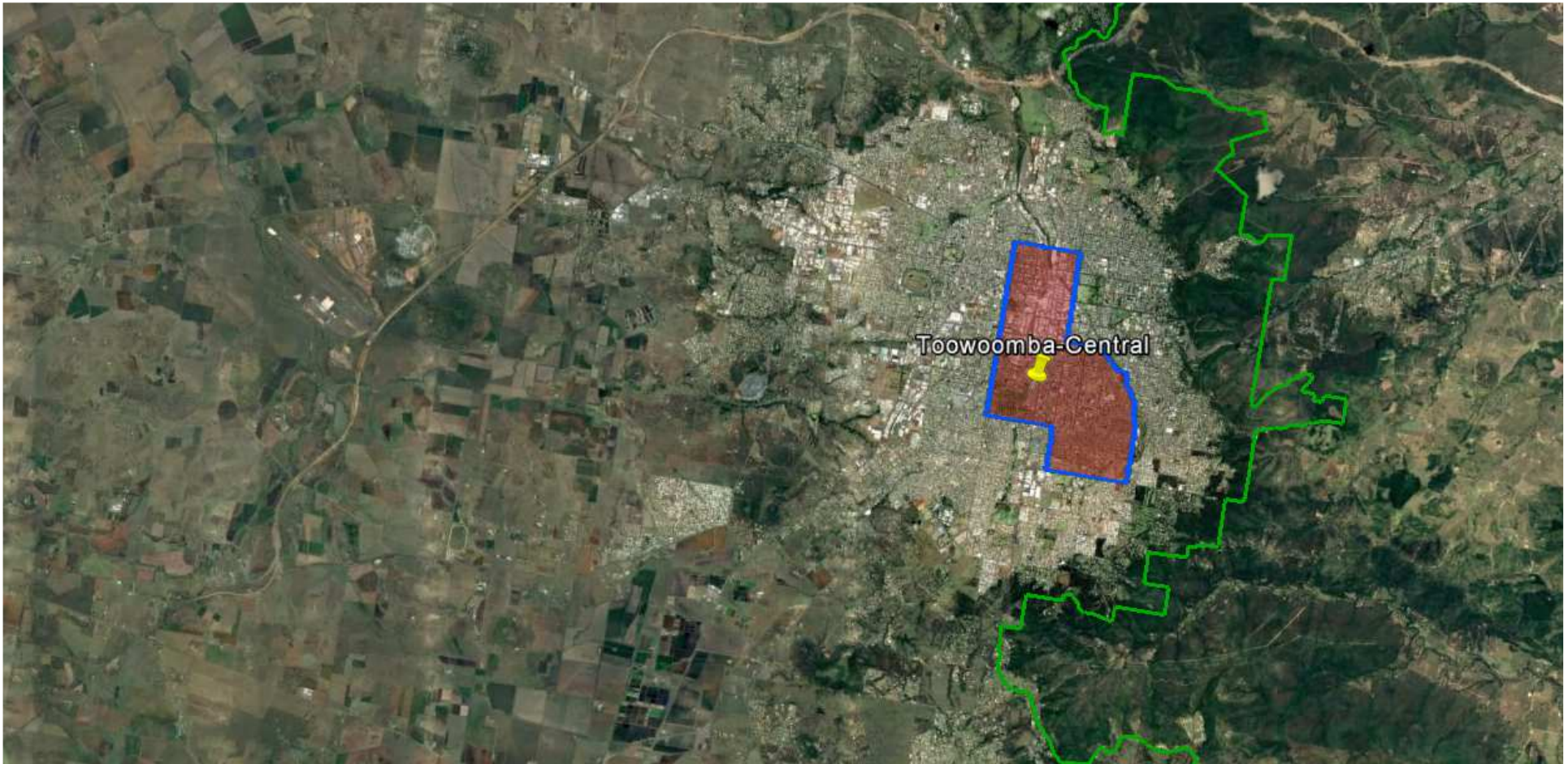
Queensland Schools Planning Reference Committee
 Cross-Sectoral New Schools Demand Mapping 2016-2036
Toowoomba Regional Council
SA2
Highfields

| Findings | | | |
|--|---|--|---|
| Primary | | Secondary | |
| 1st Decade to 2026 | 2nd Decade to 2036 | 1st Decade to 2026 | 2nd Decade to 2036 |
| No new primary schools are likely to be required in the first decade. Expansion of existing sites likely to capture growth | No new primary schools are likely to be required in the second decade. Expansion of existing sites likely to capture growth | No new secondary schools are likely to be required in the first decade. Expansion of existing sites likely to capture growth | No new secondary schools are likely to be required in the second decade. Expansion of existing sites likely to capture growth |



Queensland Schools Planning Reference Committee
 Cross-Sectoral New Schools Demand Mapping 2016-2036
Toowoomba Regional Council
SA2 Cluster
Cambooya-Wyreema; Darling Heights; Drayton - Harristown

| Findings | | | |
|--|---|--|---|
| Primary | | Secondary | |
| 1st Decade to 2026 | 2nd Decade to 2036 | 1st Decade to 2026 | 2nd Decade to 2036 |
| No new primary schools are likely to be required in the first decade. Expansion of existing sites likely to capture growth | No new primary schools are likely to be required in the second decade. Expansion of existing sites likely to capture growth | No new secondary schools are likely to be required in the first decade. Expansion of existing sites likely to capture growth | 0 - 1 new secondary school may be required in the second decade |



Queensland Schools Planning Reference Committee
 Cross-Sectoral New Schools Demand Mapping 2016-2036
Toowoomba Regional Council
SA2
Toowoomba-Central

| Findings | | | |
|--|---|--|---|
| Primary | | Secondary | |
| 1st Decade to 2026 | 2nd Decade to 2036 | 1st Decade to 2026 | 2nd Decade to 2036 |
| No new primary schools are likely to be required in the first decade. Expansion of existing sites likely to capture growth | No new primary schools are likely to be required in the second decade. Expansion of existing sites likely to capture growth | No new secondary schools are likely to be required in the first decade. Expansion of existing sites likely to capture growth | No new secondary schools are likely to be required in the second decade. Expansion of existing sites likely to capture growth |



Queensland Schools Planning Reference Committee
 Cross-Sectoral New Schools Demand Mapping 2016-2036
Toowoomba Regional Council
SA2 Cluster
Newtown (Qld); Wilsonton

| Findings | | | |
|--|---|--|---|
| Primary | | Secondary | |
| 1st Decade to 2026 | 2nd Decade to 2036 | 1st Decade to 2026 | 2nd Decade to 2036 |
| No new primary schools are likely to be required in the first decade. Expansion of existing sites likely to capture growth | No new primary schools are likely to be required in the second decade. Expansion of existing sites likely to capture growth | No new secondary schools are likely to be required in the first decade. Expansion of existing sites likely to capture growth | No new secondary schools are likely to be required in the second decade. Expansion of existing sites likely to capture growth |