

Queensland Schools Planning Reference Committee – Cross-Sectoral New Schools Demand Mapping 2021 to 2041 Toowoomba Regional Council – 20 November 2019

New school recommendations reflect the potential need of new state and non-state primary and secondary schools based on an assessment of the 2018 edition Queensland Government population projections, local advice on population growth and available capacity within the existing school network. The growth SA2s, shown below, were selected for detailed assessment during the Demand Mapping Meeting. Areas for assessment are comprised of one or more Statistical Areas Level 2 (SA2s) which are established by the Australian Bureau of Statistics and are the smallest statistical area commonly used for a range of statistical information including population projections. Population projections used to inform this assessment are prepared by the Queensland Government Statistician's Office and can be accessed [here](#).

| SA2 or Cluster | New government and non-government schools that may be required: | | | | Estimated and Projected Primary (ages 5-11) and Secondary (ages 12-17) School-Age Population | | | | | |
|---|---|-----------|--------------|------------|--|-----------|---------------------|-----------|---------------------|-----------|
| | 2021 to 2031 | | 2031 to 2041 | | Population 2016 | | Growth 2021 to 2031 | | Growth 2031 to 2041 | |
| | Primary | Secondary | Primary | Secondary | Primary | Secondary | Primary | Secondary | Primary | Secondary |
| Toowoomba – West SA2 | 1-2 | 1 | 0-1 | 0-1 | 1,424 | 1,209 | 486 | 421 | 487 | 407 |
| Drayton – Harristown, Darling Heights and Cambooya – Wyreema SA2s | 0 | 0 | 0 | 0 | 3,155 | 2,252 | 181 | 200 | 314 | 271 |
| Highfields and Gowrie (Qld) SA2s | 0-1 | 0 | 0 | 0 | 2,461 | 2,007 | 174 | 44 | 234 | 221 |
| TOTAL | 1-3 | 1 | 0-1 | 0-1 | | | | | | |

Note: Recommendations do not include new schools opening in 2020.



Map of Toowoomba Regional Council showing the Statistical Areas Level 2 Assessed

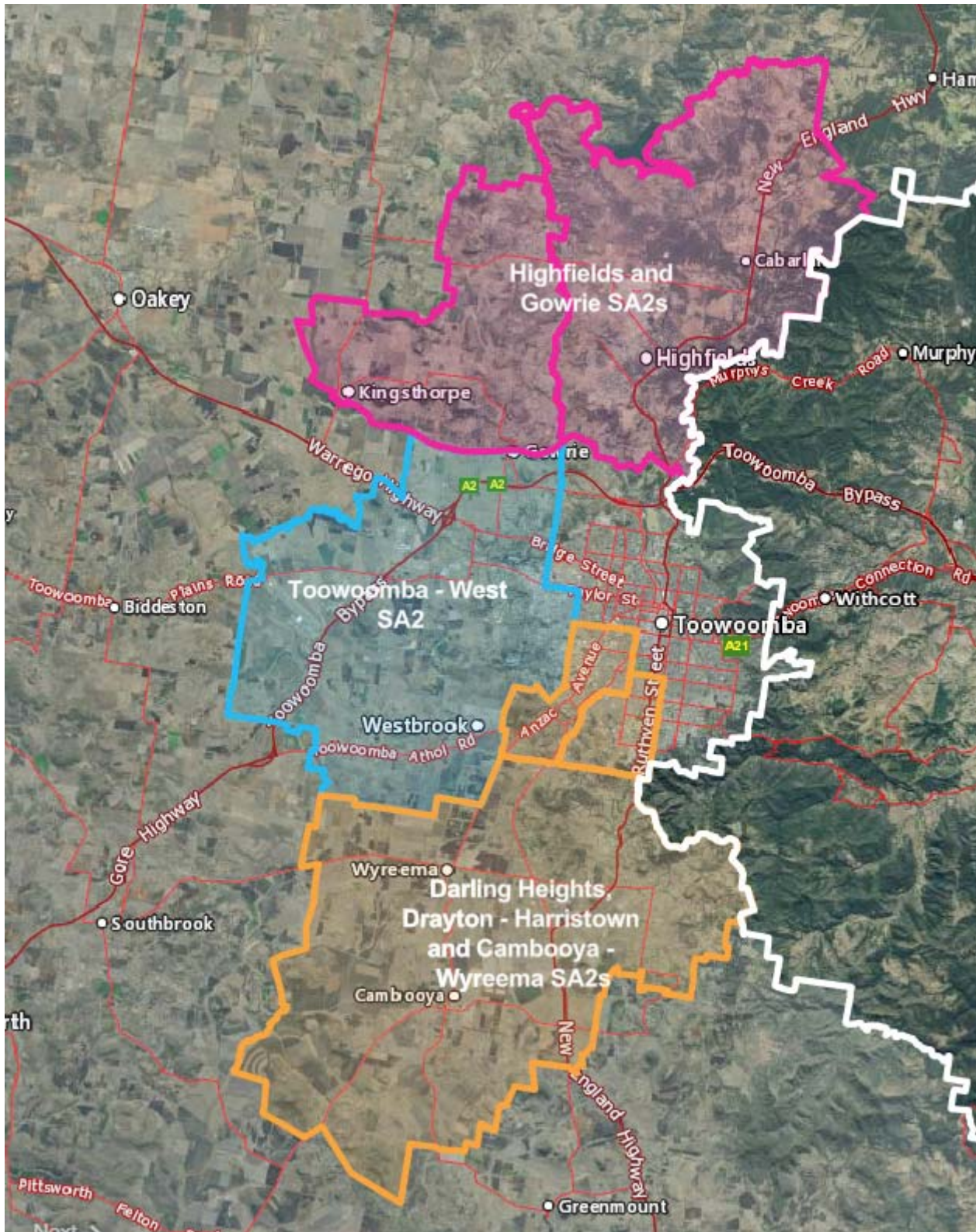


Image from Queensland Globe.

