

Queensland Schools Planning Reference Committee – Cross-Sectoral New Schools Demand Mapping 2021 to 2041 Townsville City Council – 10 March 2020

New school recommendations reflect the potential need of new state and non-state primary and secondary schools based on an assessment of the 2018 edition Queensland Government population projections, local advice on population growth and available capacity within the existing school network. The growth SA2s, shown below, were selected for detailed assessment during the Demand Mapping Meeting. Areas for assessment are comprised of one or more Statistical Areas Level 2 (SA2s) which are established by the Australian Bureau of Statistics and are the smallest statistical area commonly used for a range of statistical information including population projections. Population projections used to inform this assessment are prepared by the Queensland Government Statistician's Office and can be accessed [here](#).

SA2 or Cluster	New government and non-government schools that may be required:				Estimated and Projected Primary (ages 5-11) and Secondary (ages 12-17) School-Age Population					
	2021 to 2031		2031 to 2041		Population 2016		Growth 2021 to 2031		Growth 2031 to 2041	
	Primary	Secondary	Primary	Secondary	Primary	Secondary	Primary	Secondary	Primary	Secondary
Deeragun SA2	1-2	1	2	1	2,773	1,814	1,186	981	1,519	1,084
Townsville – South SA2	0-1	0	1-2	1	353	320	676	642	959	781
Condon – Rasmussen and Douglas SA2s	0	0	0	0	1,754	1,475	297	214	509	449
Bohle Plains and Mount Louisa SA2s	0-1	1	0-1	0	1,970	1,376	521	465	463	387
Oonoonba and Hermit Park – Rosslea SA2s	0	0	0	0	1,119	907	187	131	75	93
Townsville City – Northward SA2	0	0	0	0	481	676	87	129	113	162
TOTAL	1-4	2	3-5	2						

Note: Recommendations do not include new schools opening in 2020.



Map of Townsville City Council showing the Statistical Areas Level 2 Assessed

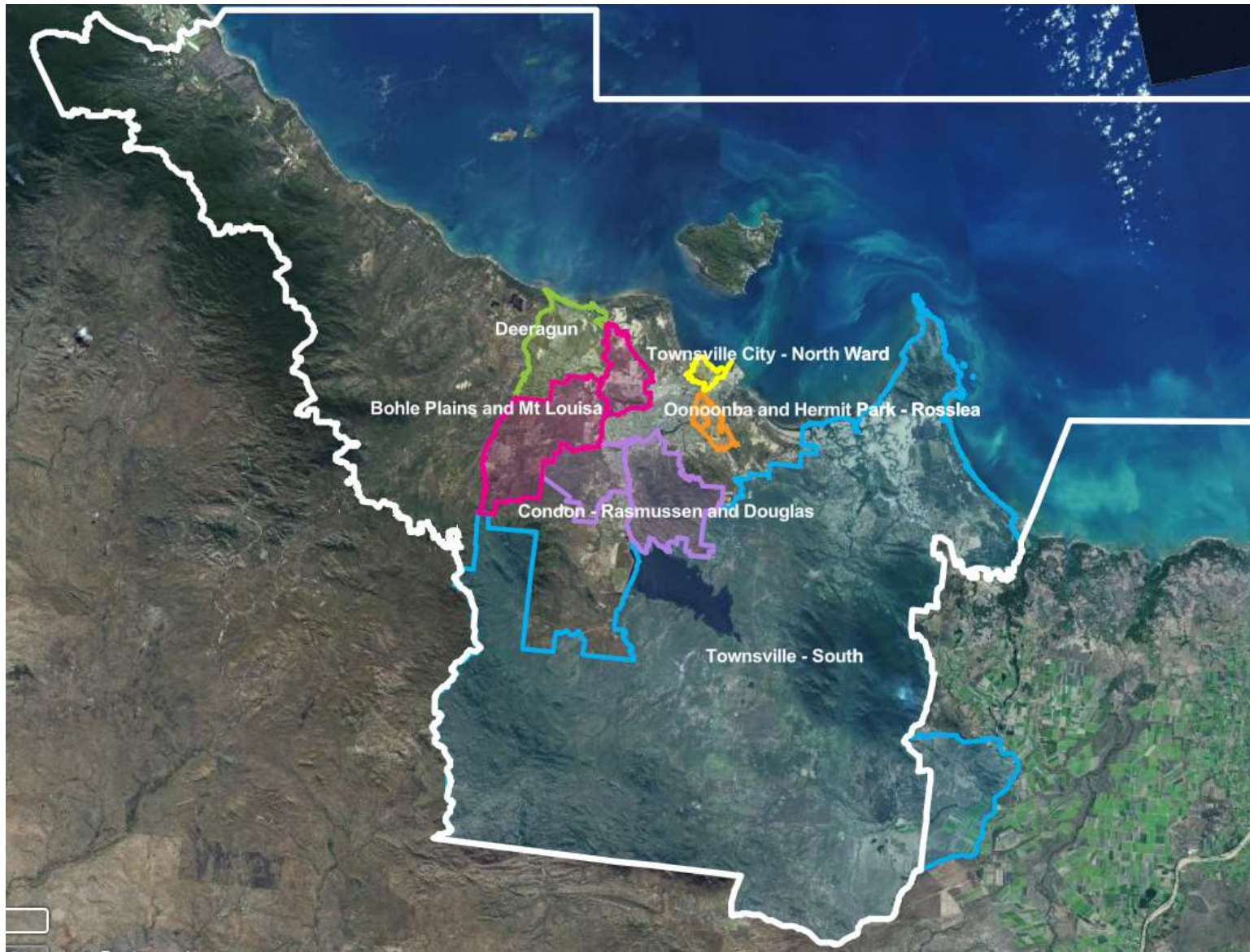


Image from Queensland Globe.